

The logo for Churchills, featuring the word "Churchills" in a stylized, red, outlined font with a white drop shadow, set against a dark blue background.

Doncaster Road

Harlington, Doncaster DN5 7JB

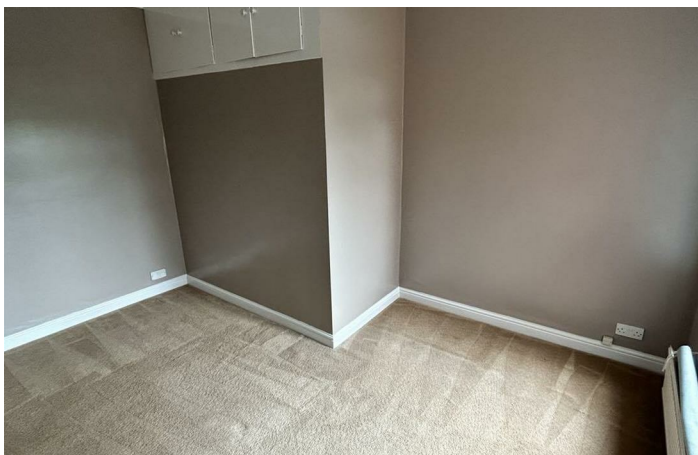
- DESIRABLE VILLAGE LOCATION
- TWO RECEPTION ROOMS
 - MODERN BATHROOM
- GOOD MOTORWAY LINKS
 - EPC RATING C
- TWO DOUBLE BEDROOMS
- WELL APPOINTED KITCHEN
- DOUBLE SHOWER CUBICLE & BATH
 - NEWLY DECORATED

£750 Per Month





Location





Local Authority Doncaster
Council Tax Band A
EPC Rating C

Churchills Lettings Office

16 High Street, Mexborough, South
Yorkshire, S64 9AS

Contact

01709 582880
Info@churchillsestateagents.com
www.churchillsestateagents.com

Agents Note: Whilst every care has been taken to prepare these particulars, they are for guidance purposes only. All measurements are approximate and for general guidance purposes only and whilst every care has been taken to ensure accuracy, they should not be relied upon and potential buyers/tenants are advised to recheck the measurements.