



31 Burlington Road, Redland
Guide Price £1,250,000

RICHARD
HARDING



31 Burlington Road,

Redland, Bristol, BS6 6TJ

RICHARD
HARDING

An exquisite five bedroom Grade II listed period home in a wonderful location close to The Downs and Whiteladies Road. Enjoying a good sized level garden, plus flexible lower ground floor accommodation, currently providing a useful rental income.

Key Features

- Superbly located in a highly desirable Redland Street, within a short stroll of excellent shops, restaurants, cafes, bus connections and the weekly farmers' market of Durdham Downs.
- Flexible lower ground floor accommodation - perfect for visiting relatives, lodgers etc.
- **Ground Floor:** entrance hallway, sociable kitchen/dining space, cloakroom/wc.
- **First Floor:** landing, drawing room, bedroom 2, shower room/wc.
- **Second Floor:** landing, principal bedroom suite with en-suite bath/shower room and dressing room, understairs utility cupboard.
- **Third Floor:** landing, three further bedrooms, family bathroom/wc.
- **Lower Ground Floor (Flat):** currently arranged as a 1 bedroom flat with sitting room, kitchen, bedroom, bath/shower room/wc and access to cellars.
- **Garden:** good sized level lawned garden with a north-westerly aspect attracting late afternoon and early evening summer sunshine.
- A unique and versatile family home with much to offer.





GROUND FLOOR

APPROACH: via garden gate, accessed off Exeter Buildings, which enters a lovely level garden with attractive stone pillars and steps leading up to a raised terrace where you will find the main front door to the house.

ENTRANCE VESTIBULE: high ceilings with ornate ceiling cornicing, window to side providing natural light, floor matting and part glazed door leading into:-

ENTRANCE HALLWAY: wonderful high ceilings with ceiling cornicing, impressive original staircase climbing up through the house, modern period style radiator, understairs storage cupboard, door accessing ground floor cloakroom/wc. Further doors accessing a large sociable kitchen/dining space.

KITCHEN/DINING SPACE: described and measured as two separate areas as follows:-

Kitchen: (13'8" x 13'0") (4.16m x 3.95m) built-in kitchen with a range of base and eye level gloss units with worktop over and inset sink and drainer unit. Appliance space for fridge/freezer, range cooker and dishwasher. Large picture window to front overlooking the gardens, wide wall opening creating a sociable connection through to:-

Dining Room: (18'3" x 14'5") (5.57m x 4.40m) impressive high ceilings with original detailed ceiling cornicing and central ceiling rose, feature chimney recess with wood burning stove and slate hearth, exposed painted floorboards, contemporary upright radiator, large window to front overlooking the lawned gardens.

CLOAKROOM/WC: low level wc, wash hand basin, inset spotlight, window to side.

FIRST FLOOR

LANDING: doors off to first floor drawing room, bedroom 2 and shower room/wc. Staircase continues rising to the second floor landing.

DRAWING ROOM: (18'5" x 14'8") (5.61m x 4.46m) an impressive living space with floor to ceiling picture window to front, high ceilings with ornate ceiling cornicing and central ceiling rose, chimney recess with wood burning stove and slate hearth, wood flooring, radiators.

BEDROOM 2: (13'8" x 13'0") (4.17m x 3.97m) a good sized double bedroom with high ceilings, ceiling coving, large window to front, exposed stripped floorboards, radiator.

SHOWER ROOM/WC: white suite comprising oversized shower enclosure with system fed shower, low level wc, wash hand basin, contemporary radiator, window to front.

SECOND FLOOR

LANDING: staircase continuing up to the third floor landing and a truly impressive feature arched sash window to side flooding the stairwell with natural light, with ornate cornicing over. Doors off the landing leading to the principal bedroom suite and understairs utility area (with plumbing and appliance space for washing machine and dryer).

BEDROOM SUITE: a large double bedroom with adjoining dressing room and en-suite, described as follows:-

Bedroom 1: (13'10" x 13'7") (4.21m x 4.14m) double bedroom with window to front, radiator. Door accessing:-

En-Suite Bath/Shower Room/WC: a large en-suite bathroom with window to front, raised walk-in wet room style shower area with dual headed system fed shower, large double ended freestanding bath with mixer taps and shower attachment, low level wc, two oval sinks set into a counter with storage beneath, contemporary upright radiator, towel rail, ceiling coving and inset spotlights. Wall opening connecting through to:-

Dressing Room: (14'2" x 8'2") (4.32m x 2.50m) space for ample wardrobes, high ceilings, ceiling coving and inset spotlights.

THIRD FLOOR

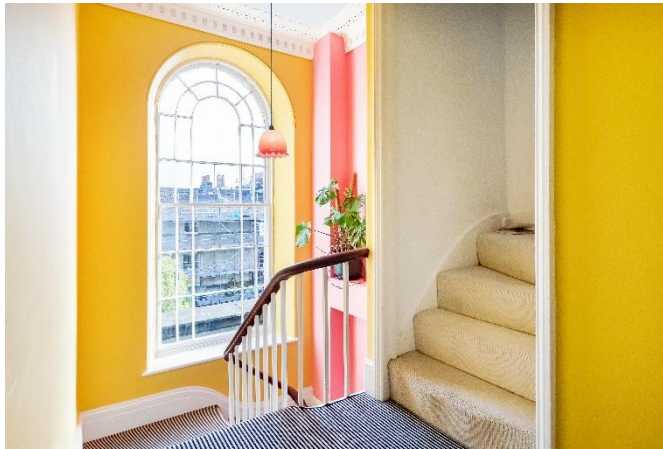
LANDING: a central landing with doors off to three bedrooms and a family bathroom/wc.

BEDROOM 3: (14'5" x 9'11") (4.39m x 3.03m) a double bedroom with window to front, built-in open wardrobe/hanging rail to chimney recess, loft hatch, radiator.

BEDROOM 4: (front) (12'10" x 7'9") (3.90m x 2.35m) a double bedroom with window to front, inset spotlights and a radiator.

BEDROOM 5: (side) (14'0" x 8'2") (4.26m x 2.49m) window to side, inset spotlights and a radiator.

FAMILY BATHROOM/WC: white suite comprising panelled bath with system fed shower over, large Velux skylight window providing natural light. Low level wc, wash hand basin with storage beneath, heated towel rail. Door accessing a boiler/airing cupboard, housing a Worcester gas central heating boiler and pressurised water tank.



LOWER GROUND FLOOR (FLAT)

Incredibly useful lower ground floor accommodation, currently used as a 1 bedroom flat creating an excellent rental income but providing great flexibility for the new owners. The entrance to the lower ground floor is via the gardens where door opens to:-

PORCH: gas central heating boiler, door to:-

CENTRAL DINING HALLWAY: with doors off to sitting room, kitchen, bedroom and bathroom. Hatch providing access via stone staircase down to extensive cellar storage spaces.

SITTING ROOM: (front) (13'8" x 13'0") (4.17m x 3.95m) window to front, exposed stripped floorboards, feature fireplace with wood burning stove, bookcasing and cupboards to chimney recesses, radiator.

KITCHEN: (14'4" x 7'3") (4.38m x 2.21m) a useful kitchen or utility space with base and eye level units, inset sink and drainer unit, plumbing for washing machine and dishwasher, further appliance space for fridge and freezer.

BEDROOM: (front) (14'4" x 10'2") (4.38m x 3.11m) a double bedroom with window to front, built-in wardrobe, original built-in sideboard/dresser.

BATHROOM/WC: a superb bathroom with vaulted ceiling, claw foot freestanding bath with wet room style shower beside, low level wc and pedestal wash basin, part tiled walls, radiator/towel rail.

OUTSIDE

GARDEN: a surprisingly good sized level lawned garden framed with foliage and having a north-westerly aspect attracting late afternoon and early evening summer sunshine.

IMPORTANT REMARKS

VIEWING & FURTHER INFORMATION: available exclusively through the sole agents, Richard Harding Estate Agents, tel: 0117 946 6690.

FIXTURES & FITTINGS: only items mentioned in these particulars are included in the sale. Any other items are not included but may be available by separate arrangement.

TENURE: it is understood that the property is Freehold. This information should be checked with your legal adviser.

LOCAL AUTHORITY INFORMATION: Bristol City Council. Council Tax Band: F

PLEASE NOTE:

- Anti Money Laundering Regulations:** when agreeing a sale of a property we are required to see both proof of identification for all buyers **and** confirmation of funding arrangements.
- Energy Performance Certificate:** It is unlawful to rent out a property which breaches the requirement for a **minimum E rating**, unless there is an applicable exemption. The energy performance rating of a property can be upgraded on completion of certain energy efficiency improvements. Please visit the following website for further details: <https://www.gov.uk/government/publications/the-private-rented-property-minimum-standard-landlord-guidance-documents>
- The photographs may have been taken using a wide angle lens.
- Any services, heating systems, appliances or installations referred to in these particulars have not been tested and no warranty can be given that these are in working order. Whilst we believe these particulars to be correct we would be pleased to check any information of particular importance to you.
- We endeavour to make our sales details accurate and reliable but they should not be relied on as statements or representations of fact and they do not constitute any part of an offer or contract. The seller does not make any representation or give any warranty in relation to the property and we have no authority to do so on behalf of the seller.
- Please contact us before viewing the property. If there is any point of particular importance to you we will be pleased to provide additional information or to make further enquiries. We will also confirm that the property remains available. This is particularly important if you are contemplating travelling some distance to view the property.
- Any floor plans provided are not drawn to scale and are produced as an indicative rough guide only to help illustrate and identify the general layout of the property.
- Any reference to alterations to, or use of, any part of the property is not a statement that any necessary planning, building regulations, listed buildings or other consents have been obtained. These matters must be verified by any intending buyer.
- Please be aware that firstly, areas of first priority (AFP) for schools do change and, secondly, just because a property is located within an AFP this does not mean schooling is guaranteed for resident children. Please make appropriate enquiries of the local authority to ensure you are fully aware of the exact position prior to exchange of contracts.

Score	Energy rating	Current	Potential
92+	A		
81-91	B		94 B
69-80	C		
55-68	D	64 D	
39-54	E		
21-38	F		
1-20	G		

If you intend to rent out this property now or in the future, please note point 2 of the Important Remarks section above.

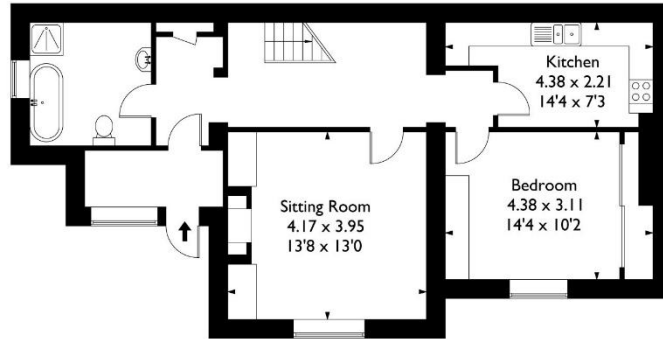




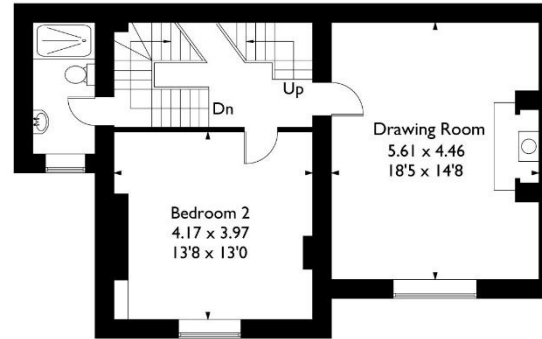


Burlington Road, Redland, Bristol, BS6 6TJ

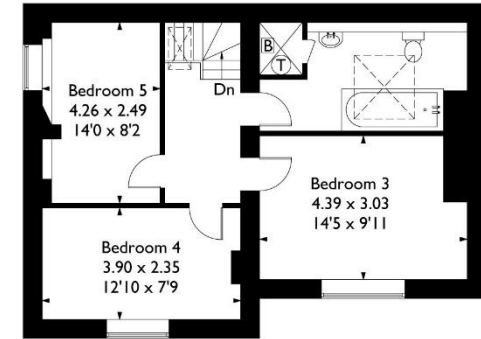
Approximate Gross Internal Area = 348.13 sq m / 3747.21 sq ft (inc. cellars)



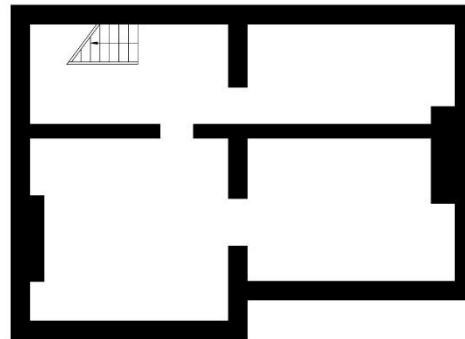
Lower Ground Floor



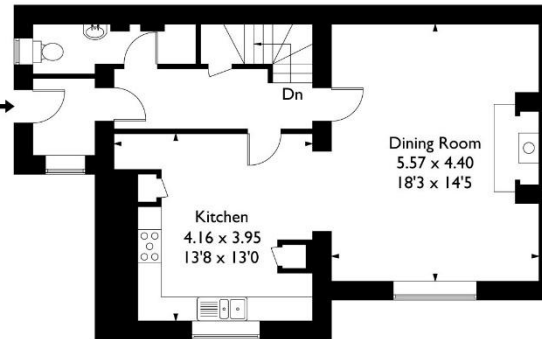
First Floor



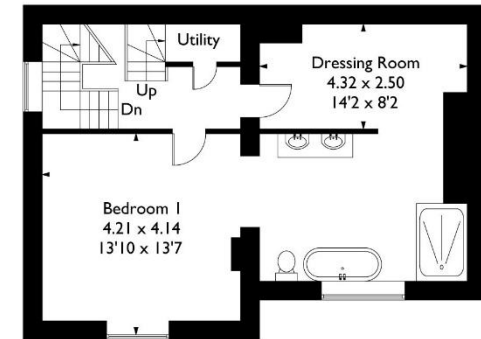
Third Floor



Cellars



Ground Floor



Second Floor

This plan is not drawn to exact scale unless stated. Whilst every attempt has been made to ensure the accuracy of this plan all measurements are approximate. No responsibility is taken for error or omission. Please check compass bearings, dimensions and layout details before making any decision reliant upon them.