



Goldney Cottage, 1 Goldney Lane

Guide Price £900,000 - £950,000

RICHARD
HARDING



Goldney Cottage, 1 Goldney Lane

Clifton, Bristol, BS8 4RT

RICHARD
HARDING

Enjoying exceptional south-westerly facing views – a unique and completely renovated 4 double bedroom, 2 bath/shower room, Victorian period detached house offering versatile accommodation including a superb, high quality kitchen/breakfast room seamlessly leading out onto an enticing south by south-west facing rear garden.

Key Features

- Off the beaten track in an almost hidden but central location, nestling into the slopes of Clifton on the borders of Cliftonwood, equidistant between Clifton Village and Bristol's historic harbourside and therefore accessible to all parts of central Bristol.
- Our vendor clients undertook an extensive refurbishment which to name only a few items include: a new roof, re-render and painting of exterior, replacement of lead water pipe, a complete re-wire, a new pressurised water system, new double-glazed wooden windows throughout, new radiators, new en-suite and family bath/shower room and new bespoke kitchen with integral appliances.
- Built circa 1875, the property is an oasis of quiet in a friendly neighbourhood with lots of great facilities right on the doorstep. Clifton has lots of great shops, boutique, coffee shops and delis, as well as pubs and restaurants suiting different tastes and budgets. The property is accessed only on foot or by bike and thus away from passing traffic, but with residents parking in adjoining streets.
- The accommodation of circa 1,565 sq.ft., is set over three levels summarised as follows: - Ground Floor: entrance hallway, cloakroom/utility room, kitchen/breakfast room, sitting/dining room. First Floor: landing, 2 double bedrooms (one with en-suite shower room). Second Floor: part galleried landing, 2 further double bedrooms, family bath/shower room.
- Outside: the garden is arranged on three sides of the house, is level and enjoys a sunny orientation, and is well stocked with a fine array of flowering plants and mature shrubs. Block build Garden shed.
- A highly individual family home with so much to appreciate and savour – location, facilities, atmosphere, character and lots of light and space.





GROUND FLOOR

APPROACH: From the pathway, a solid wood panelled front door with etched glass panels and external wall light, opening to: -

ENTRANCE HALLWAY: Inlaid entrance mat and Amtico flooring, radiator, inset ceiling downlights. Cloakroom cupboard housing gas/electric meters plus switchboard. Panelled doors opening to: -

CLOAKROOM/UTILITY: (6'11" x 4'7") (2.11m x 1.4m) low level dual flush WC, wall mounted wash hand basin with mixer tap and cupboard below, a pair of double glazed windows to the side elevation, radiator, wood effect flooring, partially tiled walls to dado height, inset ceiling down lights. Wall mounted Worcester Bosch gas fired system boiler. Space and plumbing for washing machine.

KITCHEN/BREAKFAST ROOM: (17'1" x 11'3") (5.21m x 3.43m) a stylish and well-appointed kitchen/breakfast room. Comprehensively fitted with an array of Portland stone fronted (plus some in white) base and eye level units combining soft closing drawers and cabinets. Roll edged worktop surfaces with splashback tiling and pelmet lighting. Franke stainless steel centre sink with draining board to side and mixer tap over. Integral appliances including electric oven, electric grill/oven, five ring induction hob, extractor hood, tall fridge/freezer and dishwasher. Amtico flooring with underfloor heating and wall mounted digital thermostat control, moulded skirting, radiator, inset ceiling downlights, skylight window. Wooden double glazed sash window to the side elevation. Powder coated aluminium double glazed double doors overlooking and opening externally to the south-westerly facing garden.

SITTING/DINING ROOM: (23'7" x 13'9") (7.19m x 4.20m) a dual aspect principal reception room having two large wooden double glazed sash windows overlooking the south-westerly facing rear garden plus a further large double glazed sash window to the side elevation. Tall, moulded skirtings, coved ceiling, inset ceiling down lights, large column style radiator, chimney breast with inset wood burning stove set upon a slate hearth, understairs storage cupboard. Double glazed casement wooden door opening externally to the south-westerly facing rear garden. Staircase ascending to: -

FIRST FLOOR

LANDING: enjoying plenty of natural light via an arched wooden double-glazed window to the front elevation, moulded skirting, inset ceiling downlights, understairs storage cupboard, double opening cupboard with hanging rail and shelving. Staircase ascending to the second floor. Panelled doors opening to: -

BEDROOM 1: (13'9" x 12'9") (4.20m x 3.88m) dual aspect with wooden double glazed sash windows to the side and rear elevations enjoying exceptional views both towards Bristol's historic harbourside and across Clifton towards Leigh Woods. Tall moulded skirtings, column radiator, ceiling light point, triple opening built in wardrobe with ample hanging rail and shelving space. Panelled door opening to: -

En-Suite Shower Room/WC: (9'9" x 4'9") (2.97m x 1.45m) wet room style shower with glass screen, built in shower unit, handheld shower attachment and an overhead waterfall style shower. Large wash hand basin with mixer tap and pull out drawers below. Low level dual flush WC with concealed cistern. Tiled flooring with underfloor heating, partially tiled walls, heated towel rail/radiator, wall mounted double opening mirrored cupboard, inset ceiling down lights, extractor fan, part opaque wooden double glazed sash window to the rear elevation with far reaching views.

BEDROOM 2: (14'1" x 11'1") (4.30m x 3.39m) dual aspect with wooden double glazed sash windows to both the rear and side elevations (the former with far reaching views across to the Ashton Court Estate), tall moulded skirtings, two ceiling light points, radiator, double opening built in wardrobe with shelving.

SECOND FLOOR

PART GALLERIED LANDING: part galleried over the stairwell with moulded skirtings, ceiling light point, loft access. Door to plant room housing hot water cylinder with pressurised water tank. Doors to: -

BEDROOM 3: (14'3" x 10'9") (4.34m x 3.28m) south facing wooden double glazed sash window giving exceptional views across Clifton and Hotwells including the water of Bristol's historic harbourside taking in the Ashton Court Estate with Dundry in the distance. Tall moulded skirting, canopied ceiling with ceiling light point, fitted book shelving, radiator.

BEDROOM 4: (17'5" x 13'9") (5.32m x 4.20m) dual aspect with Velux windows to both the front and rear elevations having fitted black out blinds, moulded skirtings, radiator, canopied ceiling with ceiling light point.



FAMILY BATH/SHOWER ROOM: (14'8" x 5'1") (4.47m x 1.55m) high sloping ceiling with two Velux windows having opaque glazed glass. Panelled bath with wall mounted mixer tap. Wet room style shower with folding glass screen, built in shower unit and an overhead circular waterfall style shower. Low level dual flush WC. Wall mounted wash hand basin with mixer tap and drawer below. Tiled flooring with under floor heating, majority tiled walls, heated towel rail/radiator, inset ceiling down lights, extractor fan, wall mounted mirror with integral lighting.

OUTSIDE

(46'8" X 33'5") (14.2m x 10.19m) Enjoying a sunny south and south-westerly orientation plus an incredible amount of privacy. Accessed internally by both the kitchen/ breakfast room and sitting/dining room the main section of the garden is level and predominantly laid to lawn with pathway and well stocked borders featuring an array of flowering plants and mature shrubs plus apple tree. Outside lighting and double external power socket, useful wood store/ tool shed with sedum roof.

SOUTH FACING SIDE GARDEN: (15'9" X 8'10") (4.80m x 2.69m) designed for ease of maintenance with raised plant bed and slatted shelving to one side with specimen tree and an established honeysuckle.

NORTH FACING SIDE GARDEN: (25'9" X 3'4" increasing to 9'8") (7.85m x 1.02m/2.95m) useful pedestrian gate opening on to side lane, block built garden shed with personal door and window, plus separate bicycle storage shed, external lighting, double external power socket.

IMPORTANT REMARKS

VIEWING & FURTHER INFORMATION: available exclusively through the sole agents, Richard Harding Estate Agents, tel: 0117 946 6690.

FIXTURES & FITTINGS: only items mentioned in these particulars are included in the sale. Any other items are not included but may be available by separate arrangement.

TENURE: it is understood that the property is a leasehold with 9000 years from 31/12/1868 with ground rent of £7 per annum. This information should be checked with your legal adviser.

LOCAL AUTHORITY INFORMATION: Bristol City Council. Council Tax Band: F

PLEASE NOTE:

- Anti Money Laundering Regulations:** when agreeing a sale of a property we are required to see both proof of identification for all buyers and confirmation of funding arrangements.
- Energy Performance Certificate:** It is unlawful to rent out a property which breaches the requirement for a minimum E rating, unless there is an applicable exemption. The energy performance rating of a property can be upgraded on completion of certain energy efficiency improvements. Please visit the following website for further details:

<https://www.gov.uk/government/publications/the-private-rented-property-minimum-standard-landlord-guidance-documents>

- The photographs may have been taken using a wide-angle lens.
- Any services, heating systems, appliances or installations referred to in these particulars have not been tested and no warranty can be given that these are in working order. Whilst we believe these particulars to be correct, we would be pleased to check any information of particular importance to you.
- We endeavour to make our sales details accurate and reliable, but they should not be relied on as statements or representations of fact, and they do not constitute any part of an offer or contract. The seller does not make any representation or give any warranty in relation to the property, and we have no authority to do so on behalf of the seller.
- Please contact us before viewing the property. If there is any point of particular importance to you, we will be pleased to provide additional information or to make further enquiries. We will also confirm that the property remains available. This is particularly important if you are contemplating travelling some distance to view the property.
- Any floor plans provided are not drawn to scale and are produced as an indicative rough guide only to help illustrate and identify the general layout of the property.
- Any reference to alterations to, or use of, any part of the property is not a statement that any necessary planning, building regulations, listed buildings or other consents have been obtained. These matters must be verified by any intending buyer.
- Please be aware that firstly, areas of first priority (AFP) for schools do change and, secondly, just because a property is located within an AFP this does not mean schooling is guaranteed for resident children. Please make appropriate enquiries of the local authority to ensure you are fully aware of the exact position prior to exchange of contracts.

Score	Energy rating	Current	Potential
92+	A		
81-91	B		81 B
69-80	C		
55-68	D	62 D	
39-54	E		
21-38	F		
1-20	G		

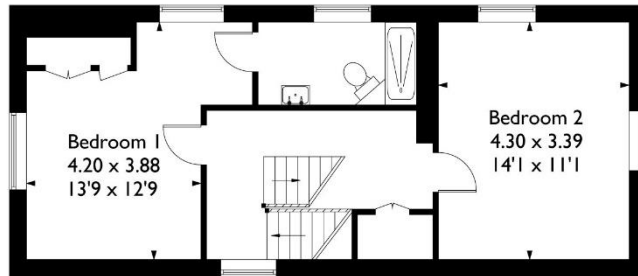
If you intend to rent out this property now or in the future, please note point 2 of the Important Remarks section above.



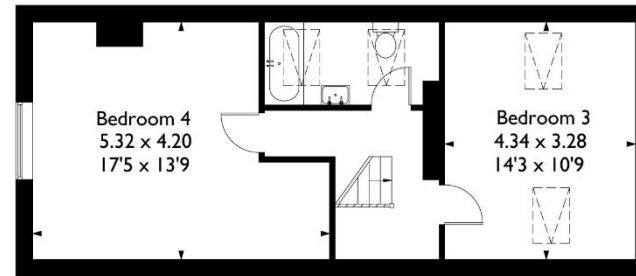


Goldney Lane, Clifton, Bristol BS8 4RT

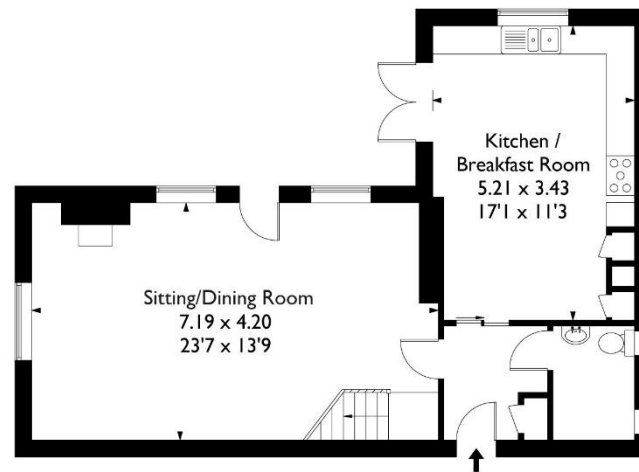
Approximate Gross Internal Area 145.3 sq m / 1564.3 sq ft



First Floor



Second Floor



Ground Floor

This plan is not drawn to exact scale unless stated. Whilst every attempt has been made to ensure the accuracy of this plan all measurements are approximate. No responsibility is taken for error or omission. Please check compass bearings, dimensions and layout details before making any decision reliant upon them.