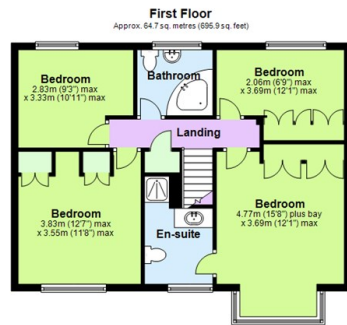
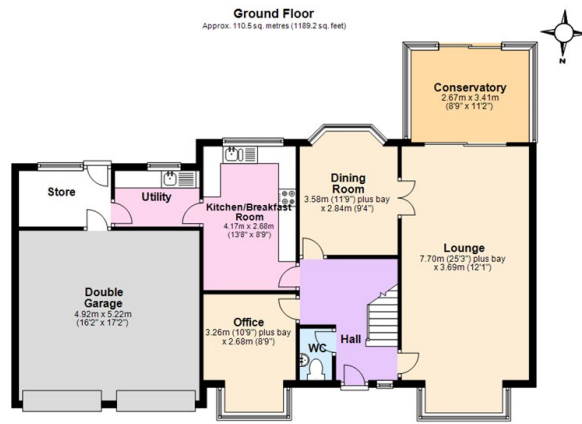




Hoylake, Tamworth

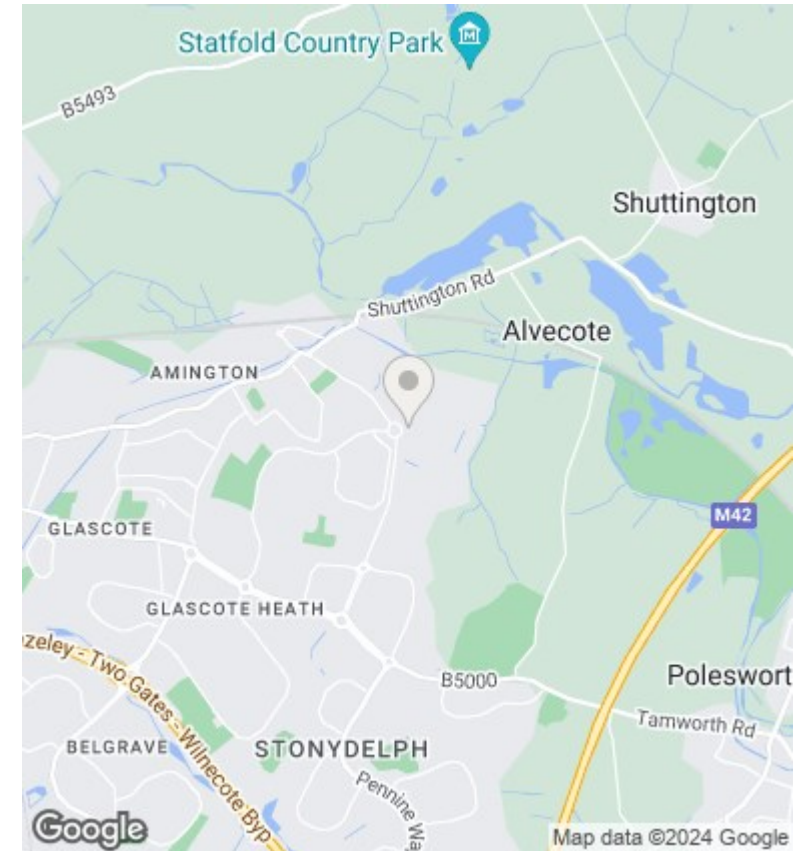
Price £475,000

- £475,000
- Three Reception Rooms + Conservatory
- Rear Garden - Driveway - Double Garage
- Sold With No Chain
- Detached Family Home
- Kitchen/Breakfast Room With Separate Utility
- Freehold - EPC Rating C
- Four Bedrooms
- D/S WC - Bathroom - En-suite
- Council Tax Band F



Total area: approx. 175.1 sq metres (1885.1 sq feet)

Where every attempt has been made to ensure the accuracy of the floor plan contained here, measurements of doors, windows, rooms and any other items are approximate and no responsibility is taken of any error, omission or mis-statement. This plan is for illustrative purposes only and should be used as such by any prospective purchaser. Plan produced using Planity.



Directions

Viewings

Viewings by arrangement only. Call 01827 66686 to make an appointment.

Council Tax Band

F

EPC Rating:

C

Energy Efficiency Rating		Current	Potential
<i>Very energy efficient - lower running costs</i>			
(92 plus)	A		83
(81-91)	B		
(69-80)	C	71	
(55-68)	D		
(39-54)	E		
(21-38)	F		
(1-20)	G		
<i>Not energy efficient - higher running costs</i>			
England & Wales		EU Directive 2002/91/EC	