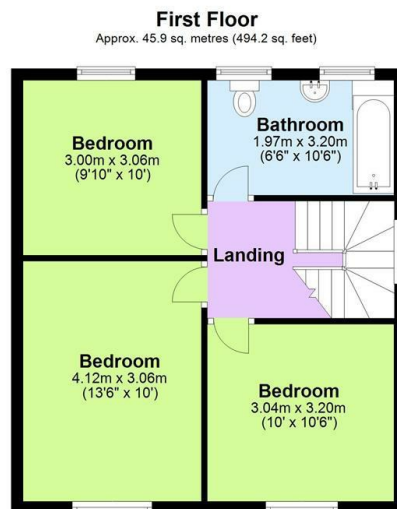
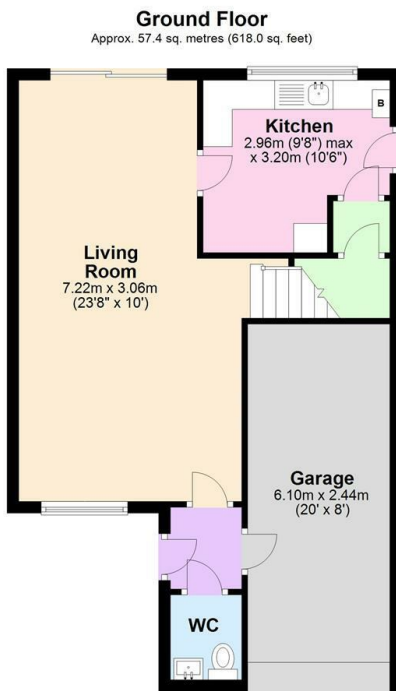




## West Drive, Bonehill, Tamworth

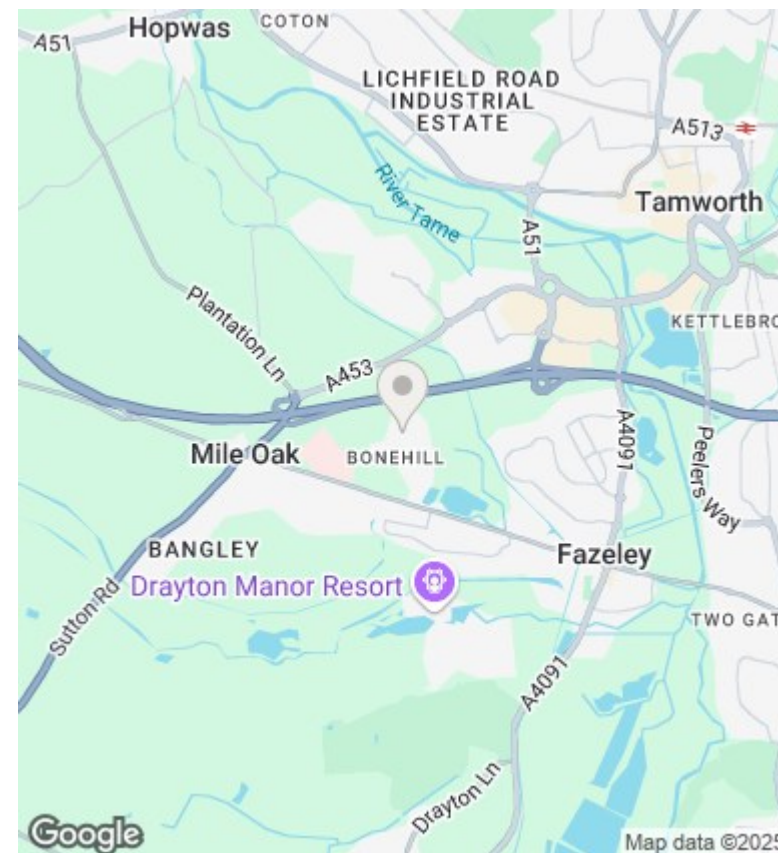
Offers In The Region Of £380,000

- Detached Family Home
- Three Bedrooms
- Driveway
- Council Tax Band D
- Lounge with Dining Area
- Family Bathroom
- Gardens
- Downstairs WC
- Garage
- Freehold



Total area: approx. 103.3 sq. metres (1112.2 sq. feet)

Where every attempt has been made to ensure the accuracy of the floor plan contained here, measurements of doors, windows, rooms and any other items are approximate and no responsibility is taken of any error, omission or mis-statement. This plan is for illustrative purposes only and should be used as such by any prospective purchaser.  
Plan produced using PlanUp.



## Directions

## Viewings

Viewings by arrangement only. Call 01827 66686 to make an appointment.

## Council Tax Band

D

## EPC Rating:

D

Energy Efficiency Rating		
	Current	Potential
Very energy efficient - lower running costs		
(92 plus) <b>A</b>		
(81-91) <b>B</b>		<b>81</b>
(69-80) <b>C</b>		
(55-68) <b>D</b>	<b>59</b>	
(39-54) <b>E</b>		
(21-38) <b>F</b>		
(1-20) <b>G</b>		
Not energy efficient - higher running costs		
<b>England &amp; Wales</b>	EU Directive 2002/91/EC	