



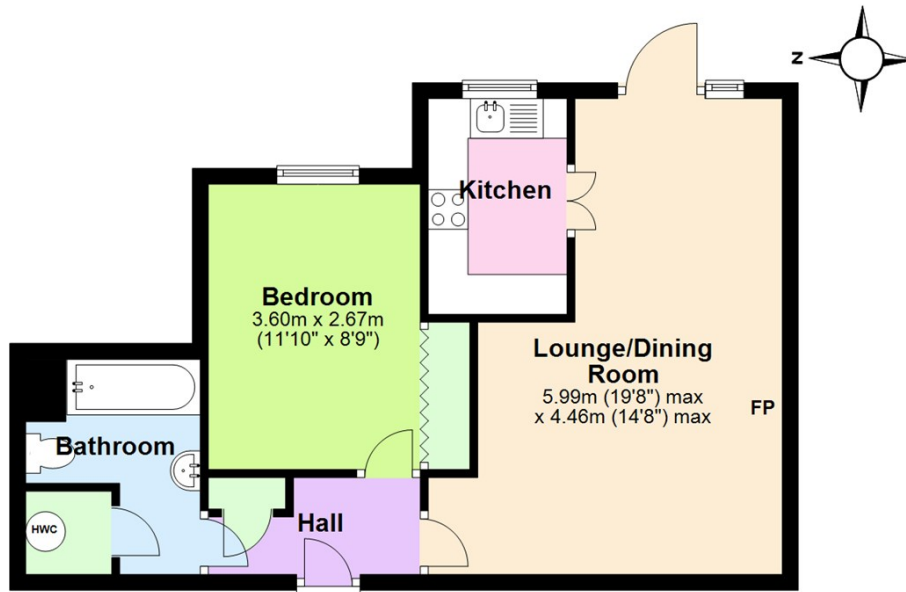
Rosy Cross, Tamworth

Guide Price £149,950

- Sold With No Chain
- Spacious Lounge/Dining Room
- Bathroom/WC
- Amenities Nearby
- EPC Rating C
- One Double Bedroom
- Fully Fitted Kitchen
- On-Site Facilities
- Service Charge £3021.90 per annum
- Council Tax Band B

Ground Floor

Approx. 46.6 sq. metres (501.3 sq. feet)



Total area: approx. 46.6 sq. metres (501.3 sq. feet)

Where every attempt has been made to ensure the accuracy of the floor plan contained here, measurements of doors, windows, rooms and any other items are approximate and no responsibility is taken of any error, omission or mis-statement. This plan is for illustrative purposes only and should be used as such by any prospective purchaser.
Plan produced using PlanUp.

EPC Rating: C

Council Tax Band: B