



Doris Croft, Dog Lane, Amington, Tamworth

Guide Price £275,000

- Two unique building plots
- Plot 1 - 178m²
- Garages are 28m² each
- Tamworth borough council website - application number is: 0550/2021.
- Plot 2 – 175m²

Building Plots Doris Croft, Dog Lane, Tamworth B77 4AH

DEVELOPMENT OPPORTUNITY

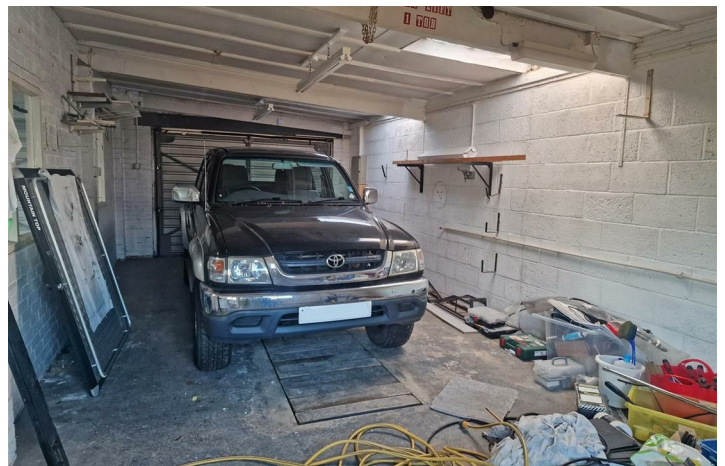
A fantastic opportunity to purchase two unique building plots located in Amington with canal frontage.

We are delighted to offer for sale planning permission for demolition of the workshop and garages and an erection of one three bedroomed house and one four bedroomed house with garages and parking.

There has been planning permission granted for the demolition of the garage workshops and the erection of one four bedroomed detached home and one three bedroomed detached home. (Please see documents attached, more information can be found on the Tamworth borough council website - application number is: 0550/2021.

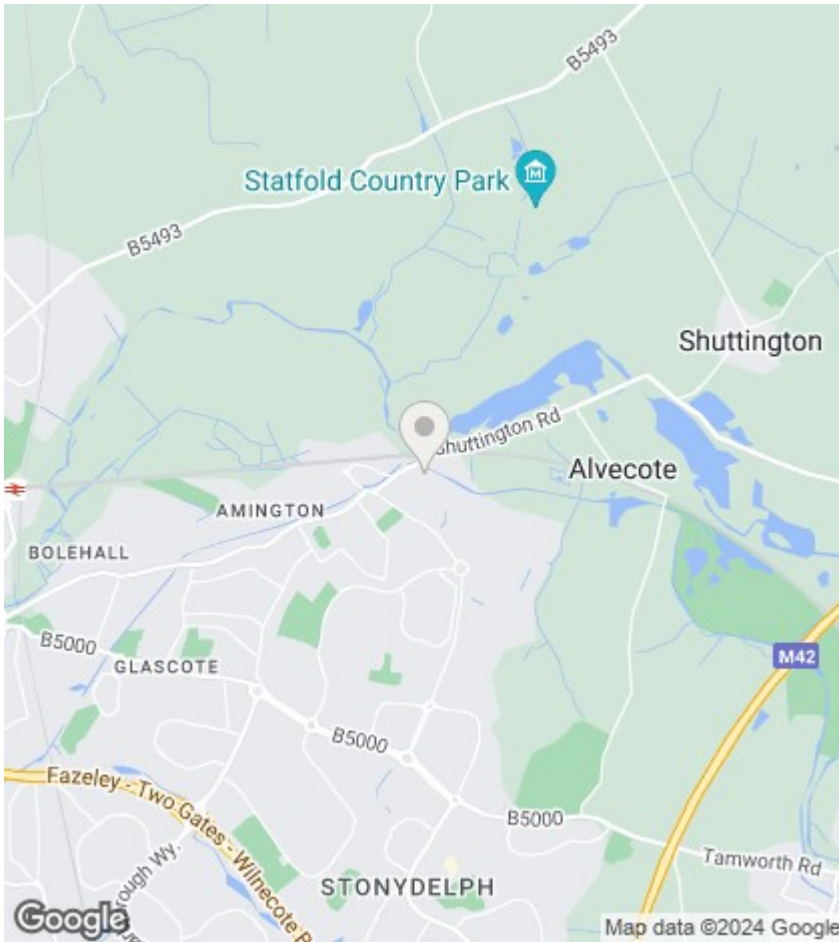


Council Tax Band:



Agent Note

DETAILS HAVE NOT BEEN CHECKED BY VENDOR &
CONSEQUENTLY INFORMATION CONTAINED HEREIN
MAY CHANGE AND ANY PROSPECTIVE PURCHASER TO
VERIFY THESE FACTS BEFORE PROCEEDING FURTHER.



Directions

Viewings

Viewings by arrangement only. Call 01827 66686 to make an appointment.

EPC Rating:

Energy Efficiency Rating		Current	Potential
Very energy efficient - lower running costs			
(92 plus)	A		
(81-91)	B		
(69-80)	C		
(55-68)	D		
(39-54)	E		
(21-38)	F		
(1-20)	G		
Not energy efficient - higher running costs			
England & Wales		EU Directive 2002/91/EC	

