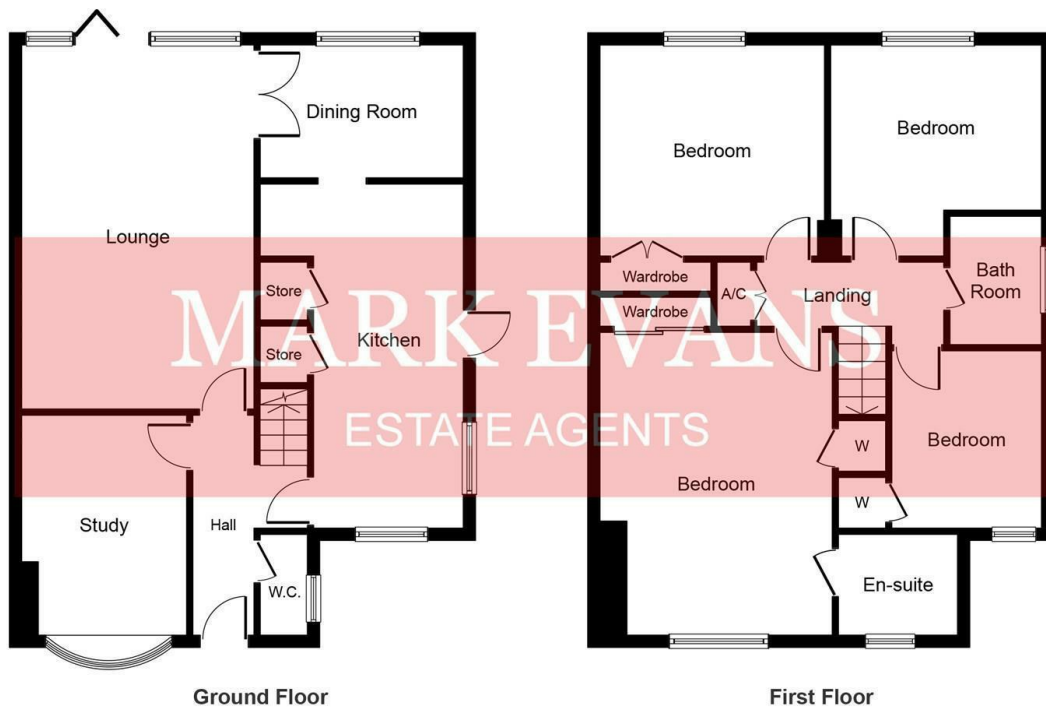




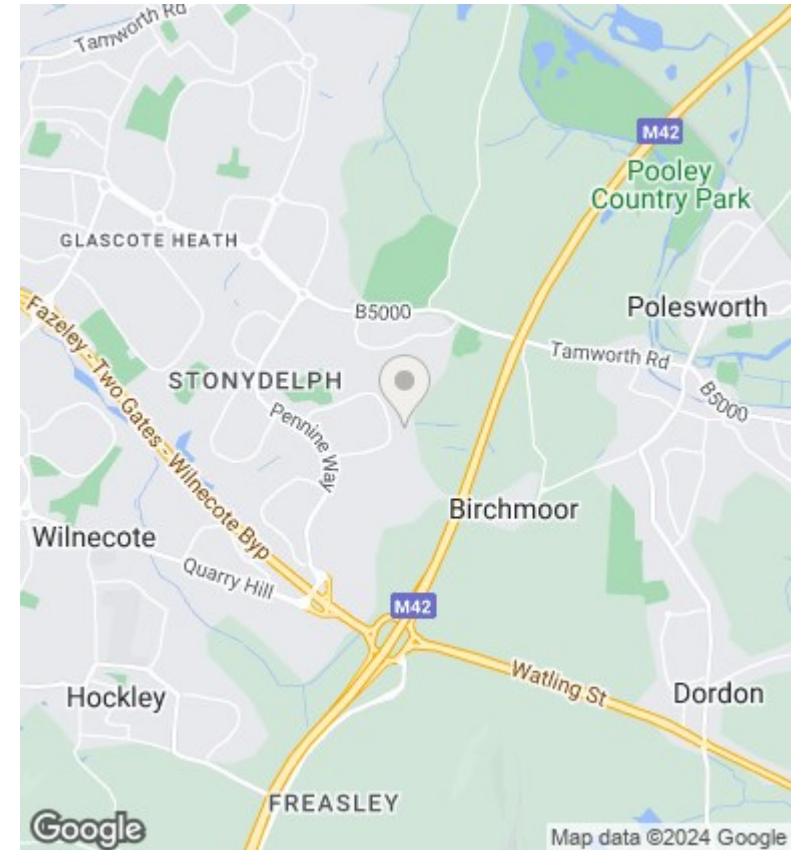
Melmerby, Wilnecote, Tamworth

£350,000

- * Georgian style pillars * * Through hallway *
- * Front study/ dining room *
- * Three further bedrooms with wardrobes *
- * Fitted cloakroom *
- * Breakfast kitchen * * Dining room *
- * Family bathroom *
- * Very spacious lounge *
- * Master bedroom with en-suite and fitted wardrobes *
- * 29'6" Garage * * Attractive gardens *



Whilst every attempt has been made to ensure the accuracy of the floor plan contained here, measurements of doors, windows, rooms and any other items are approximate and no responsibility is taken for any error, omission, or mis-statement. This plan is for illustrative purposes only and should be used as such by any prospective purchaser or tenant. The services, systems and appliances shown have not been tested and no guarantee as to their operability or efficiency can be given.
 Copyright V360 Ltd 2020 | www.housevz.com



Directions

Viewings

Viewings by arrangement only. Call 01827 66686 to make an appointment.

Council Tax Band

EPC Rating:

Energy Efficiency Rating		
	Current	Potential
<i>Very energy efficient - lower running costs</i>		
(92 plus) A		
(81-91) B		
(69-80) C		
(55-68) D		
(39-54) E		
(21-38) F		
(1-20) G		
<i>Not energy efficient - higher running costs</i>		
England & Wales	EU Directive 2002/91/EC	