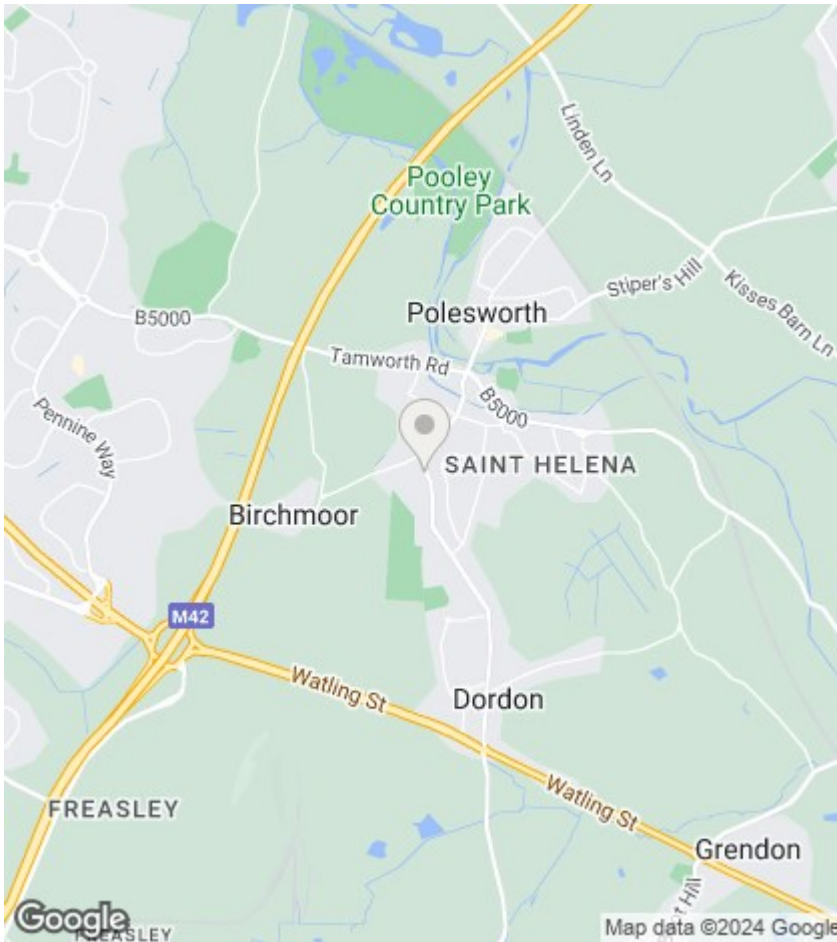




## Dordon Road, Dordon, Tamworth

Offers In The Region Of £465,000

- Asking Price: £465,000
- Three Reception Rooms
- Large Kitchen
- Family Bathroom
- Freehold - EPC Rating E
- Double Fronted Detached House
- Conservatory
- Four Bedrooms + Eaves Storage Room
- Large Plot With Multiple Outbuildings
- Council Tax Band E



## Directions

## Viewings

Viewings by arrangement only. Call 01827 66686 to make an appointment.

## Council Tax Band:

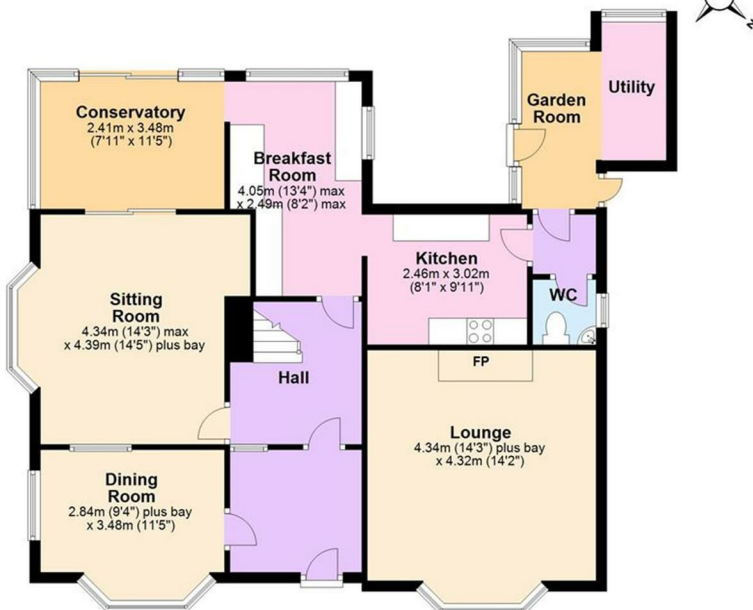
E

## EPC Rating:

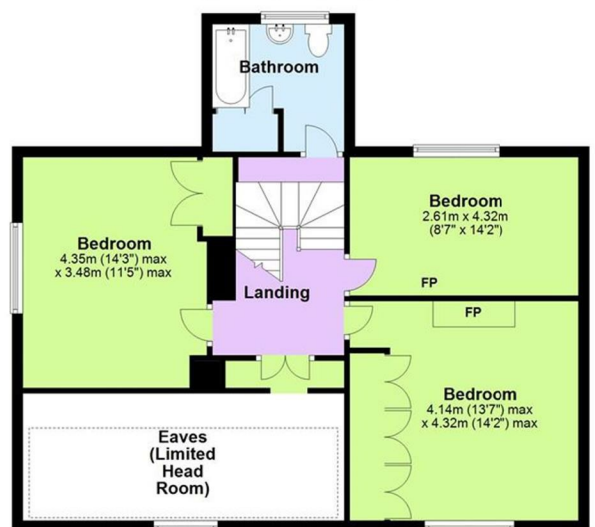
E

Energy Efficiency Rating		Current	Potential
Very energy efficient - lower running costs			
(92 plus) A			81
(81-91) B			
(69-80) C			
(55-68) D		50	
(39-54) E			
(21-38) F			
(1-20) G			
Not energy efficient - higher running costs			
England & Wales		EU Directive 2002/91/EC	

**Ground Floor**  
Approx. 95.4 sq. metres (1026.5 sq. feet)



**First Floor**  
Approx. 78.2 sq. metres (841.3 sq. feet)



Total area: approx. 173.5 sq. metres (1867.7 sq. feet)