



TO LET



15 Poplar Close, Haverhill, Suffolk, CB9 9EJ

£1,100 PCM

Balmforth

Estate Agents, Valuers & Letting Agents



- Two Bedroom End Terrace
- Modern Kitchen Diner with Patio Doors to Garden
- Modern Bathroom with Three Piece Suite and Shower over Bath
- Cambridge Side of Haverhill
- Parking Available to Front
- Spacious Lounge
- Two Double Bedrooms
- Enclosed Rear Garden
- No Pets
- Available Now

## THE PROPERTY

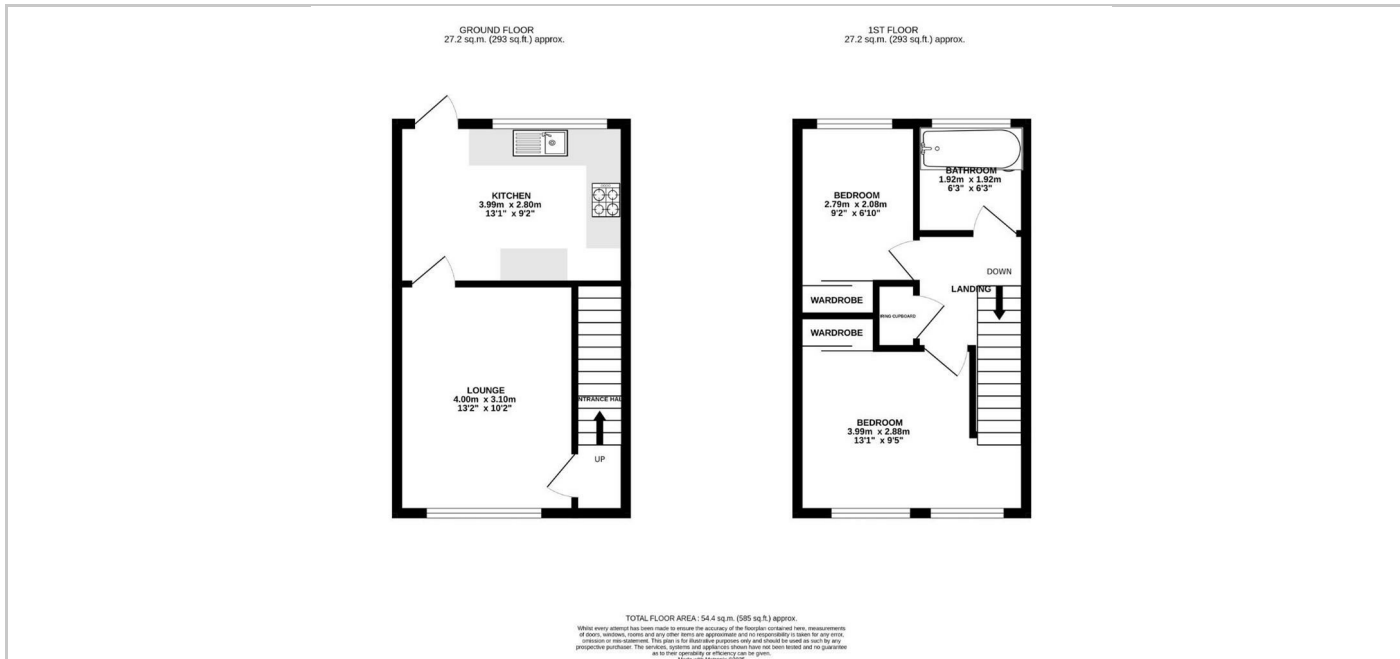
Located in the charming area of Poplar Close, Haverhill, this delightful end terrace house offers a perfect blend of comfort and modern living. With two generously sized double bedrooms, this property is ideal for small families, couples, or individuals seeking extra space.

As you enter, you are welcomed by a spacious lounge that boasts a lovely aspect to the front, providing a bright and airy atmosphere. The heart of the home is undoubtedly the generous kitchen diner, which features patio doors that lead directly to an enclosed garden, perfect for enjoying al fresco dining or simply relaxing in a private outdoor space.

The modern bathroom is equipped with a stylish three-piece suite and a convenient shower over the bath, catering to all your daily needs. Additionally, parking is readily available at the front of the property, ensuring ease of access for you and your guests.

This charming home will be available for occupancy from mid-June, making it an excellent opportunity for those looking to settle into a new residence. With its appealing features and prime location, this property is not to be missed. Come and experience the comfort and convenience that this lovely house has to offer.

## SITUATION



## Directions