



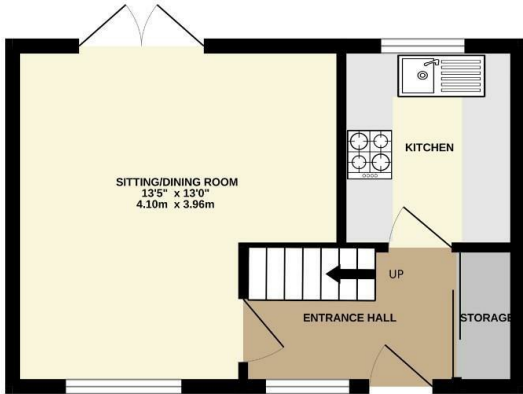
Shardlow Close, Haverhill, Suffolk, CB9 7RF

Rent - £900 PCM Deposit - £1,038

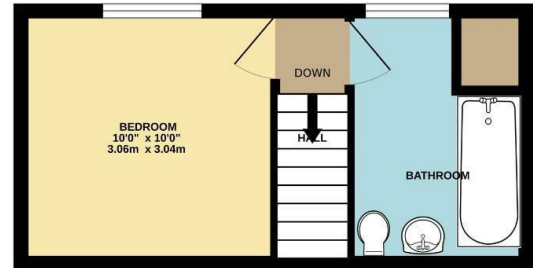
Situated within a quite cul-de-sac, this one bedroom mid terrace house offer accommodation comprising entrance hall, fitted kitchen, lounge with patio doors leading to enclosed garden to rear. To the first floor there is double bedroom and bathroom. Sadly no pets allowed. Available early next year.

- 1 BEDROOM HOUSE
- DOUBLE BEDROOM/BATHROOM/ENCLOSED GARDEN
- EPC RATING OF D
- GREAT LINKS TO CAMBRIDGE
- CALL IN TO BOOK A VIEWING!
- ENTRANCE HALL/ KITCHEN/LIVING ROOM
- COUNCIL TAX B
- GAS CENTRAL HEATING
- AVAILABLE EARLY 2026

GROUND FLOOR



1ST FLOOR



Whilst every attempt has been made to ensure the accuracy of the floorplan contained here, measurements of doors, windows, rooms and any other items are approximate and no responsibility is taken for any error, omission or mis-statement. This plan is for illustrative purposes only and should be used as such by any prospective purchaser. The services, systems and appliances shown have not been tested and no guarantee as to their operability or efficiency can be given.
Made with Metropix ©2025

