

1 The Cottage, Finkle Green - Asking Price £375,000

Birdbrook Halstead CO9 4BU



"Consistently providing outstanding service to our clients"

Asking Price £375,000

The Property

Nestled in the charming village of Birdbrook, The Cottage at Finkle Green presents a delightful opportunity for those seeking a characterful home in a picturesque setting. This enchanting three-bedroom cottage boasts two inviting reception rooms, perfect for both relaxation and entertaining.

As you step inside, you will be greeted by the warmth and charm that only a property of this nature can offer. The spacious layout provides room for family living, while the extensive views of the surrounding countryside create a serene backdrop that enhances the overall appeal of the home.

The cottage features a well-appointed bathroom, ensuring convenience for all residents. Each of the three bedrooms offers a tranquil retreat, ideal for restful nights and peaceful mornings.

With its unique character and inviting atmosphere, this property is a true gem in the popular village of Birdbrook. It is available for viewing now, allowing you to experience first-hand the charm and beauty that this cottage has to offer. Whether you are looking for a family home or a peaceful retreat, The Cottage is sure to impress. Don't miss the chance to make this delightful property your own.

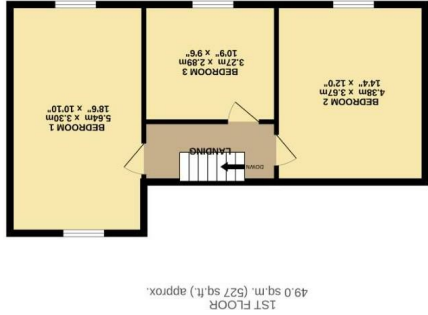
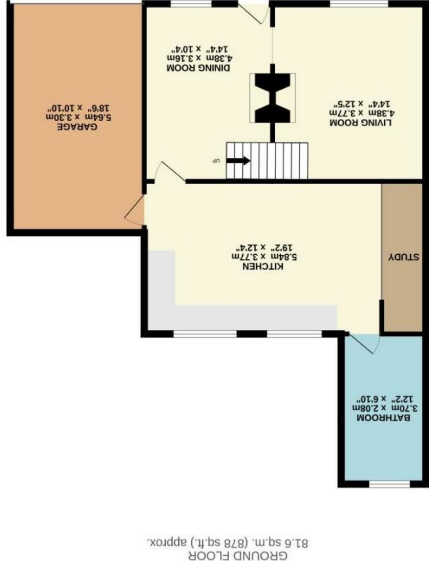
Features

- Three Bedroom Cottage
- Extensive Views of Countryside
- No Onward Chain
- Popular Village of Birdbrook
- Available to view Now
- Off Road Parking
- Family Home
- Three Bedroom Property
- Large Rear Garden
- Modernisation Required





These sales particulars have been produced as a general guide only and we would draw to your attention that we have not carried out a detailed Survey of the property nor have we tested services, appliances or specific fittings. Whilst measurements and statements given within the details are provided in good faith, their accuracy should not be relied upon. If there are any points about which you may be uncertain or would like further clarification, we would suggest that you telephone this office and speak to our staff who will endeavour to assist you.



Whilst every attempt has been made to ensure the accuracy of the layout contained herein, measurements of floors, rooms, doors and any other items are approximate and no responsibility is taken for any error, omission or misstatement. This plan is for illustrative purposes only and should be used as such by any prospective purchaser. The services, systems and appliances shown have not been installed and no guarantee as to their operation or efficiency can be given.

Made with Metropax v2025

