



TO LET



20 Ickleton Place, Haverhill, Suffolk, CB9 0AR

£235,000

Balmforth

Estate Agents, Valuers & Letting Agents

- Spacious Three Bedroom Terrace Family Home
- Open Plan Lounge Diner and Kitchen
- Downstairs Cloakroom
- Two Spacious Double Bedrooms, Third Slightly Smaller Single
- Modern Bathroom with Three Piece White Suite
- Low Maintenance Front and Rear Gardens
- Quiet Cul De Sac Location
- Allocated Parking
- Plenty of Potential
- No Onward Chain

THE PROPERTY

Located in the charming area of Ickleton Place, Haverhill, this terrace house presents a wonderful opportunity for families seeking a spacious home with potential. Boasting three well-proportioned bedrooms, this property is perfect for those looking to add their personal touch through some redecoration.

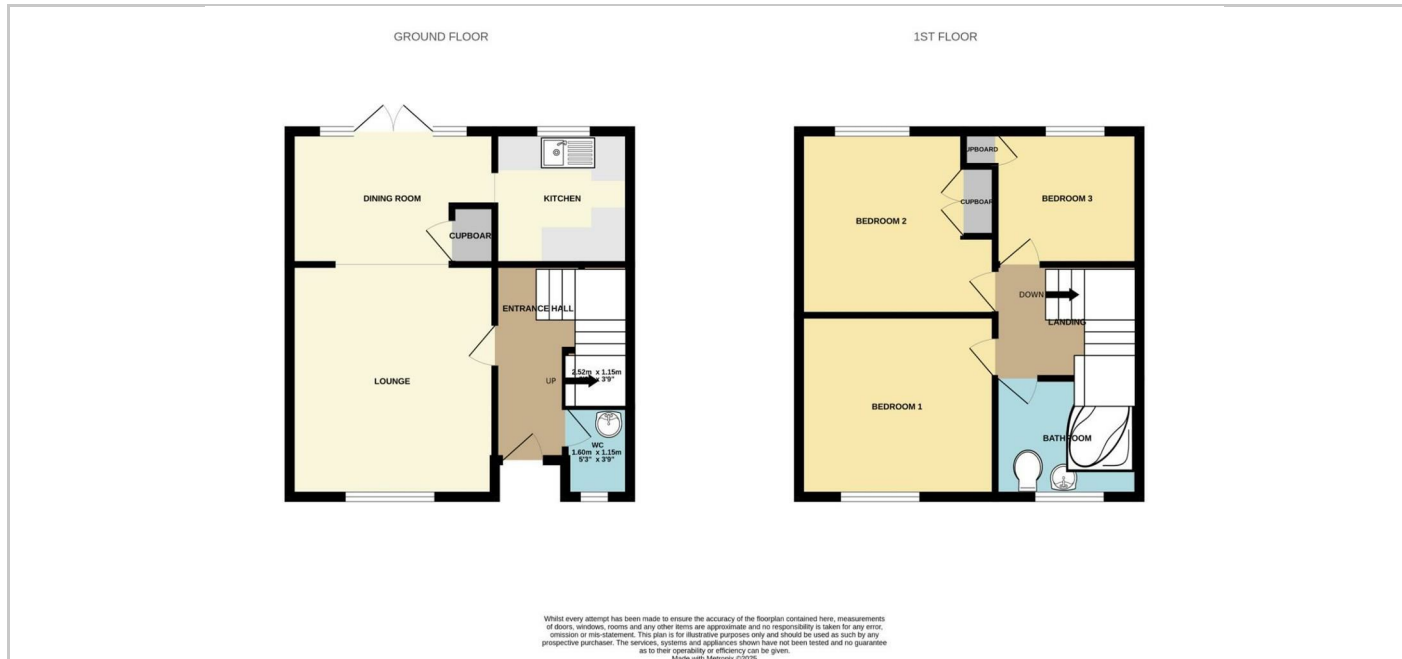
Upon entering, you are greeted by an inviting open plan lounge diner that seamlessly connects to the kitchen, creating a warm and sociable atmosphere. French doors lead out to a low-maintenance rear garden, ideal for enjoying sunny afternoons or hosting gatherings with friends and family. The downstairs cloakroom offers convenience and the under stair storage enhances the practicality of the living space.

The property features two large double bedrooms, providing ample room for relaxation and rest, alongside a slightly smaller single bedroom, perfect for children or guests. The large modern bathroom is a standout feature, offering a comfortable and stylish space for daily routines.

To the front, a small green area adds a touch of greenery, making it an ideal spot for young families to enjoy outdoor play. Additionally, the property benefits from allocated parking, ensuring convenience for residents.

This delightful family home in Haverhill is not to be missed, offering a blend of space, comfort, and potential in a friendly neighbourhood. Whether you are a first-time buyer or looking to settle down, this property is ready to welcome you.

SITUATION



Directions