



TO LET



21 Seymour Drive, Haverhill, Suffolk, CB9 9PQ

£1,200 PCM

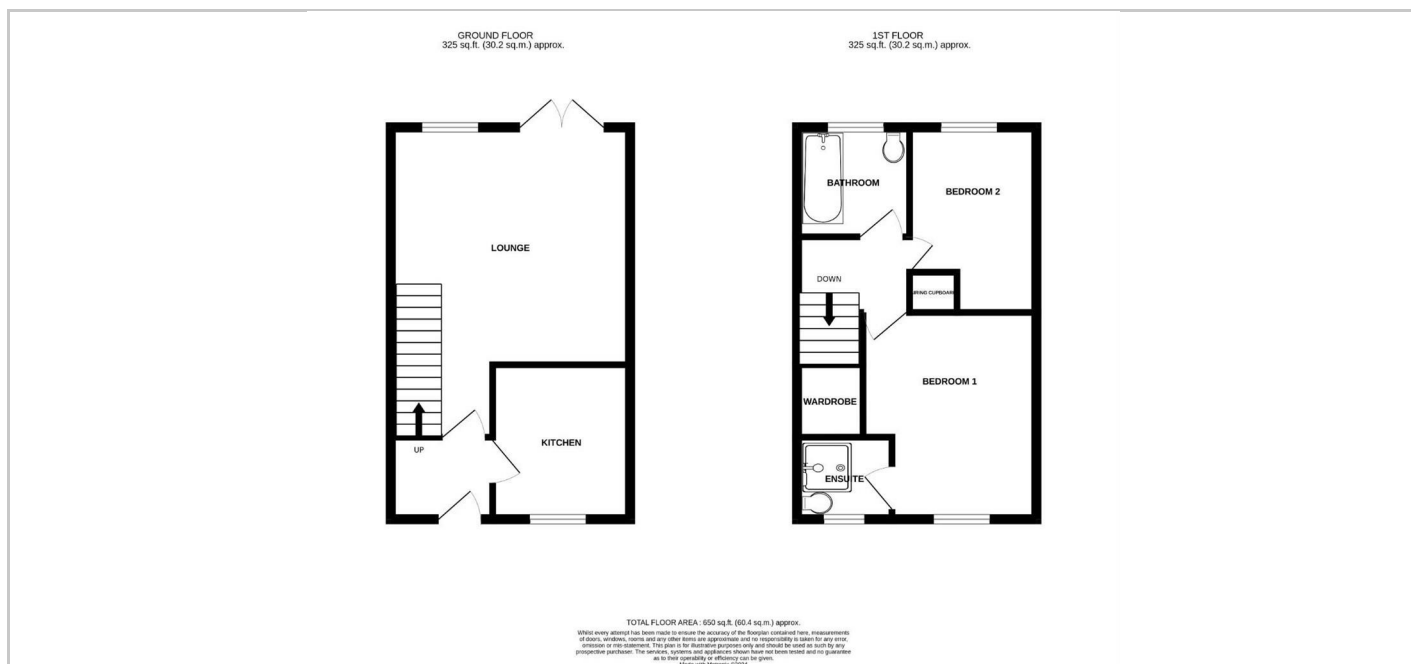
Balmforth

Estate Agents, Valuers & Letting Agents

- Two bedroom end terraced house
- Garage and off road parking
- EPC rating C
- Family bathroom and en-suite to bedroom one
- Enclosed rear garden

THE PROPERTY

Located in a quiet residential area. offering accommodation comprising lounge/dining room, kitchen, two bedrooms with recently refitted en-suite to bedroom one and bathroom. Enclosed rear garden which is not overlooked, parking to the side and garage. Available at the beginning of May - sadly no pets.



Directions

SITUATION

Attention Landlords!

Why choose Balmforth to oversee the letting and management of your investment property?

Balmforth are one of the most established lettings agents in the area with strategically placed offices in Haverhill High Street and associated offices in Mildenhall, Bury St Edmunds and Halstead.

- A friendly, professional, and highly experienced team
- Proven Reputation – check out our Google and Facebook reviews!
- Free property appraisals to ensure that you attract the best possible rental income
- Attractive letting and management fees
- Extensive advertising including rightmove.co.uk, onthemarket.com and www.balmforthestateagents.co.uk
- Detailed listings including photography, floorplans and location maps
- All paperwork prepared from our dedicated management centres
- Extensive property management services offering regular inspections, rent reviews and an excellent team of reliable contractors.

Contact your local office today for further free and impartial advice.