

balmforth

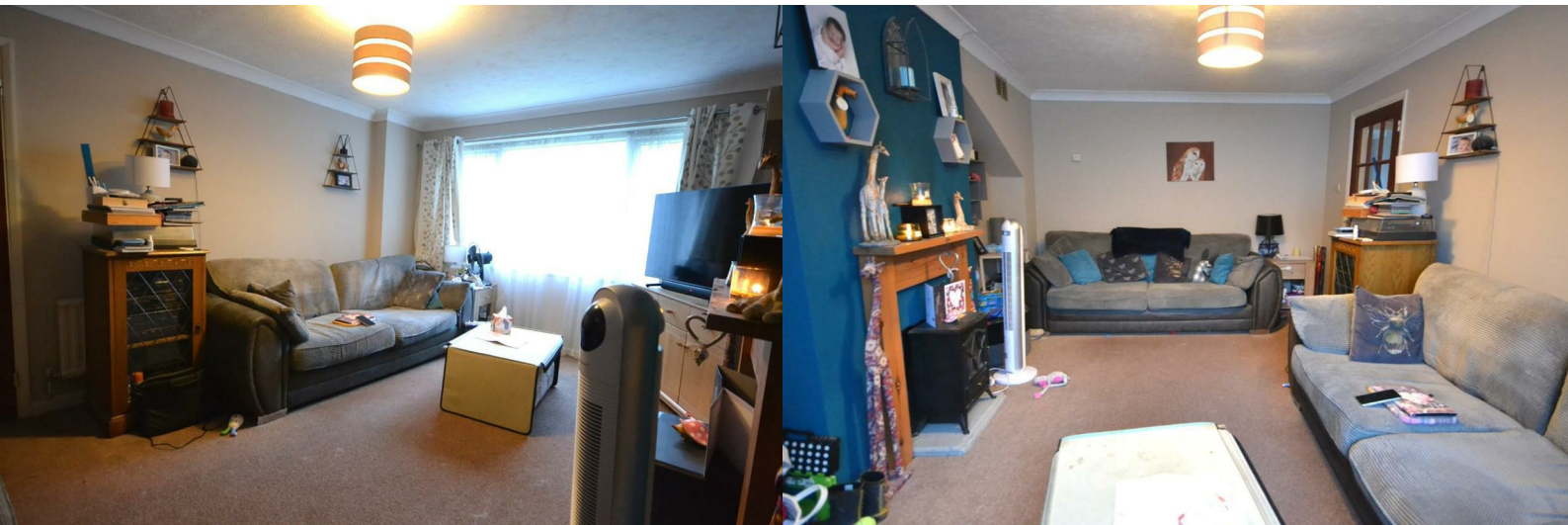
Estate & Letting Agents



62 Westward Deals

Kedington, CB9 7PJ

Asking Price £250,000



62 Westward Deals

Kedington, CB9 7PJ

Asking Price £250,000



Porch

Brick built porch with windows to either side leading straight to

6'5" x 9'1" (1.96 x 2.77)

Double room with aspect to front

Entrance Hall

Carpeted with storage cupboard access to lounge and kitchen

Lounge

11'6" x 15'11" (3.51 x 4.87)

Large lounge area with electric log burner effect fire. Large aspect giving plenty of natural light. Carpeted

Kitchen/diner

17'11" x 10'3" (5.47 x 3.14)

Cottage style kitchen with a range of wall and base units. Breakfast and dining area with storage cupboard. Upvc French doors leading to garden area

Stairs and Landing

Generous landing area leading to all bedrooms and bathroom

Bathroom

Modern three piece white suite with shower over the bath. Large frosted aspect

Bedroom 2

11'6" x 11'1" (3.51 x 3.40)

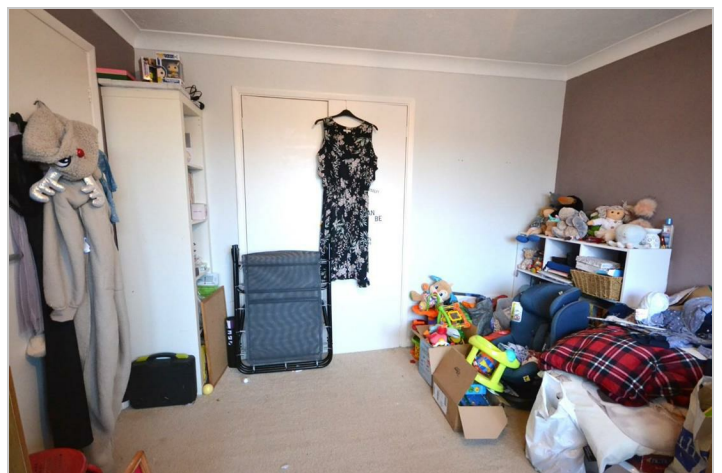
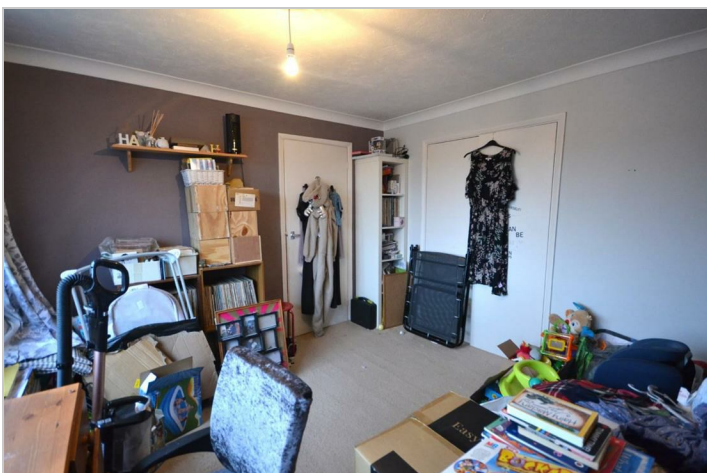
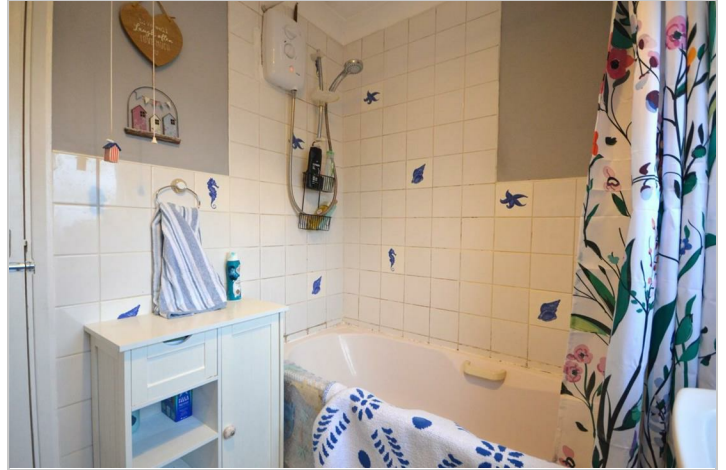
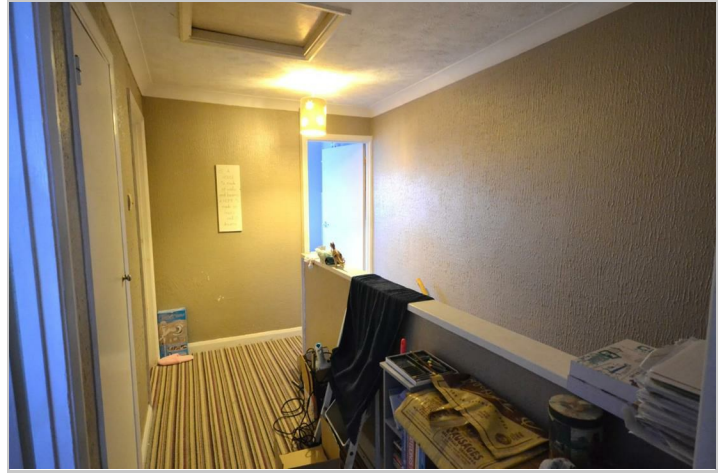
Large bedroom with fitted wardrobe and aspect overlooking garden

Main bedroom

11'6" x 12'2" (3.51 x 3.73)

Large bedroom with ample space for king size bed and furniture. Fitted wardrobe with large aspect to front

Bedroom 3



Road Map



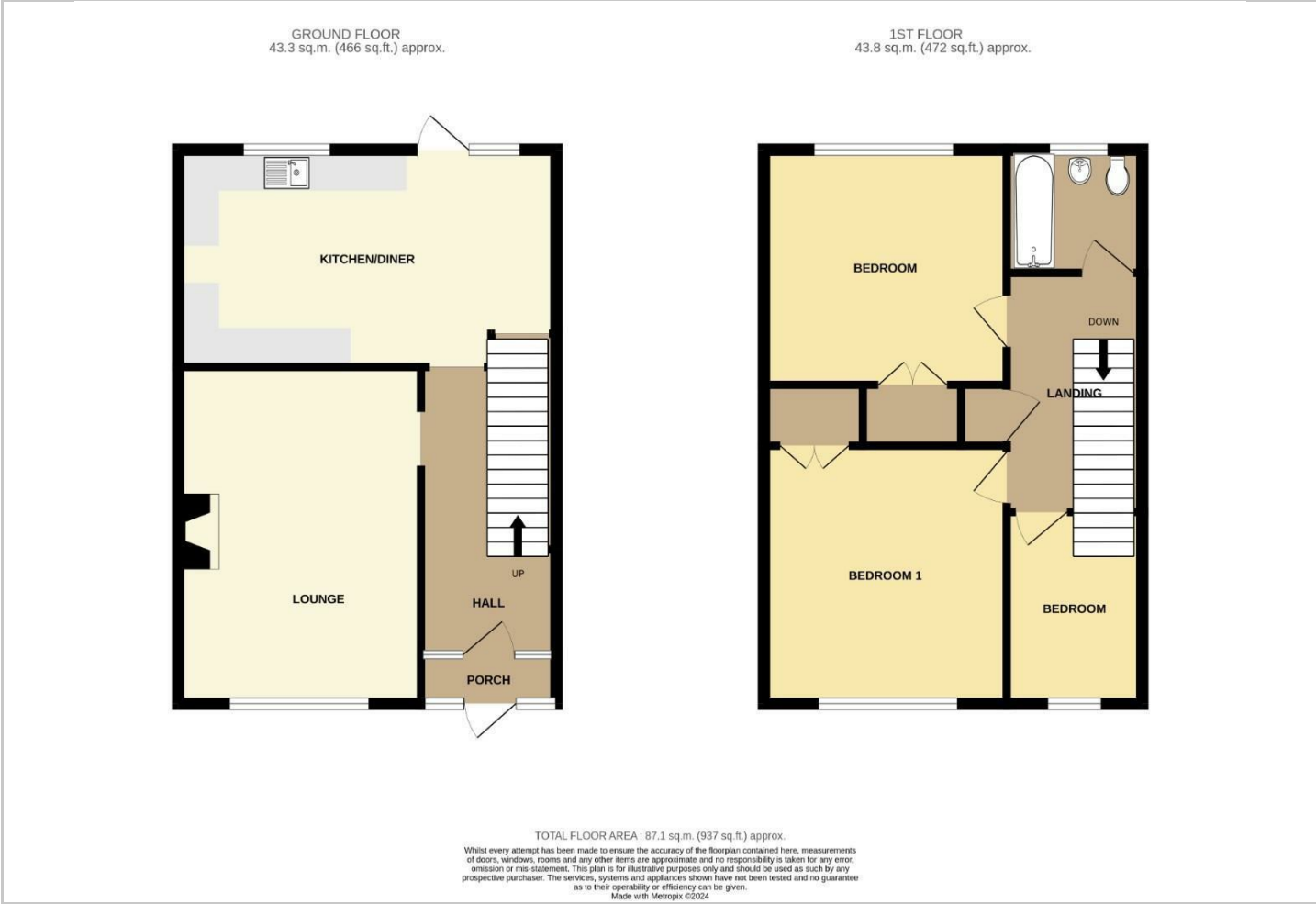
Hybrid Map



Terrain Map



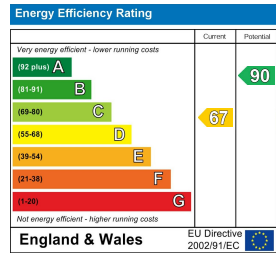
Floor Plan



Viewing

Please contact our office on 01440 707976 if you wish to arrange a viewing appointment for this property or require further information.

Energy Efficiency Graph



These particulars, whilst believed to be accurate are set out as a general outline only for guidance and do not constitute any part of an offer or contract. Intending purchasers should not rely on them as statements of representation of fact, but must satisfy themselves by inspection or otherwise as to their accuracy. No person in this firms employment has the authority to make or give any representation or warranty in respect of the property.