



Westward Deals, Haverhill, CB9 7PW

Rent - £1,400 PCM Deposit - £1,615

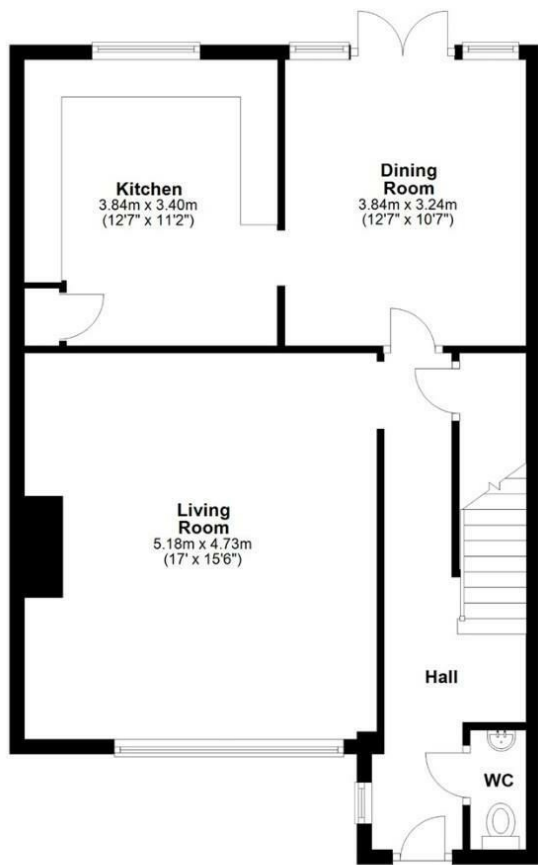
Balmforth are delighted to offer, this 4 bedroom family home to let. Located in the popular village of Kedington, this well presented property offers accommodation comprising entrance hall with cloakroom off, good size lounge, kitchen, dining room with french doors leading to rear garden. To the first floor you will find a family bathroom, separate shower room and 4 double bedrooms. To the rear of the property there is an enclosed garden with decked area. Sadly no pets. AVAILABLE NOW.

- LOCATED IN THE POPULAR KEDINGTON
- COUNCIL TAX 'C' AND EPC 'C'
- GENEROUS GARDEN
- 4 BEDROOM FAMILY HOME
- AVAILABLE NOW
- GAS CENTRAL HEATING
- NO PETS UNFORTAUNTELY
- END OF TERRACE PROPERTY

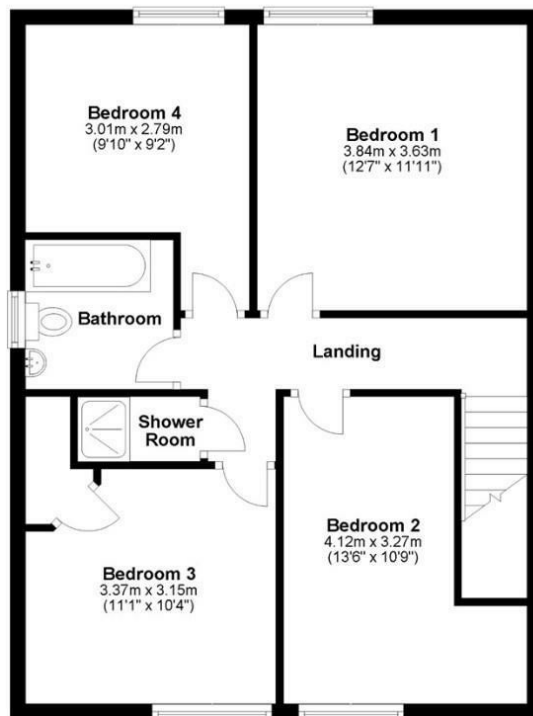


Council Tax Band: C - EPC Rating: C 69

Ground Floor



First Floor



Approx. gross internal floor area 126 sqm (1350 sqft)

