



4 Mount Terrace, Haverhill, Suffolk, CB9 8EA

£1,050 PCM

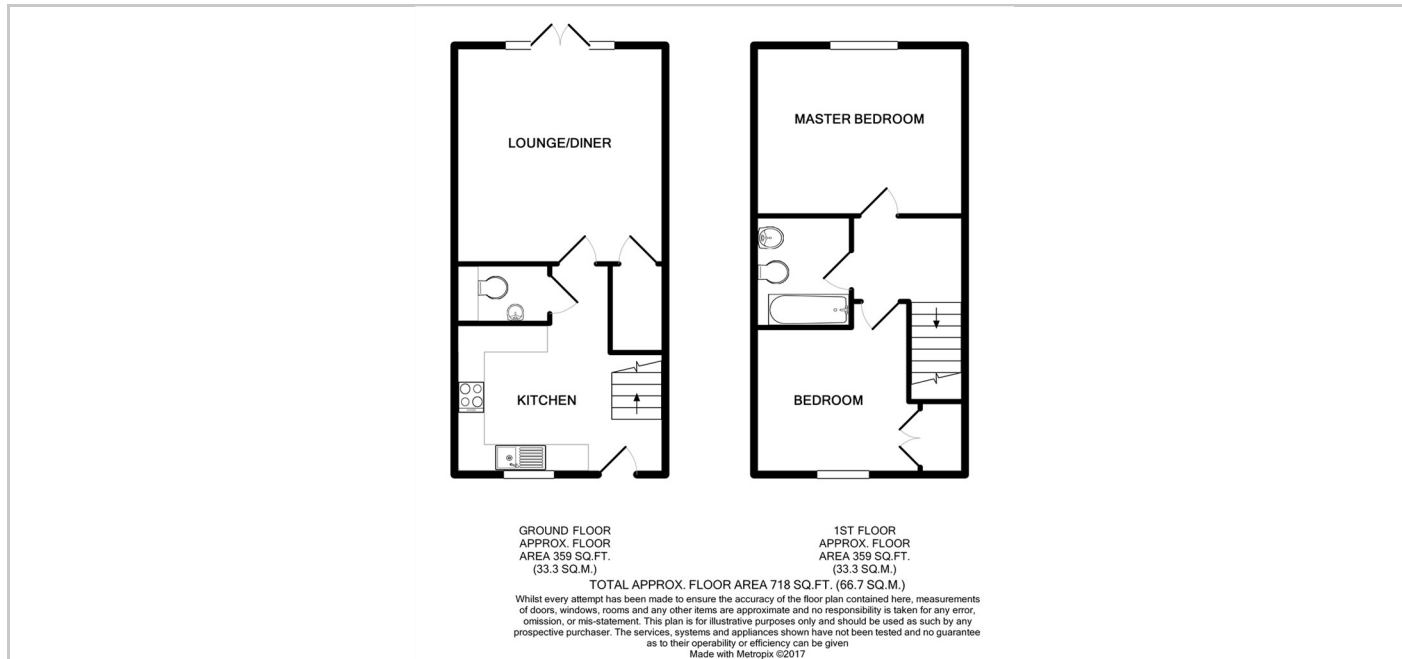
Balmforth

Estate Agents, Valuers & Letting Agents

- TWO BEDROOM
- RECENTLY REDECORATED
- OFF STREET PARKING
- EPC GRADE B
- MID TERRACED HOUSE
- INTERGRATED FRIDGE/FREEZER
- GARDEN
- AVAILABLE NOW

THE PROPERTY

Balmforth are delighted to offer this 2 bedroom mid terrace house to let. Recently redecorated throughout this conveniently located family home offers accommodation comprising an entrance hall with cloakroom off, kitchen with integral fridge/freezer, lounge with double French doors to the rear garden. To the first floor there are two generous double bedrooms one with a built in wardrobe, bathroom, off road parking. Available in early May.



SITUATION

Directions