

£350,000

Grove Road South, Southsea PO5  
3QS

**bernards**  
THE ESTATE AGENTS



## HIGHLIGHTS

- Show apartment now open, no appointment necessary
- Part of Southsea's rich history with these sympathetically retained and restored properties
- Acula Rosa Kitchens with all white goods integrated and Caesarstone quartz worktops
- Amtico Flooring throughout kitchen/living/dining and allway areas
- Porcelanosa bathroom tiles in all apartments
- Convenient on-site Car Club provided by Enterprise with the first year of membership provided free of charge
- Gated Development, A community within a community, just a short walk from all local amenities
- Landscaped gardens and mature trees harmonising with new planting to provide tranquil spaces
- On-site parking available for residents with access to EV charging points across the development
- Ofsted Outstanding eco-nursery offering play-led learning in a natural setting

### Victory Place – READY NOW

- Historic building with just four apartments, offering privacy and tranquillity
- Corner location surrounded by landscaped gardens
- Secure gated community with controlled access
- Secure video entry system on car entrance gates and communal entrances
- Allocated parking for residents
- Exceptionally high ceilings creating bright, spacious interiors
- Original tiled communal entrance full of character
- Modern kitchens with integrated appliances
- Generous storage in two-bedroom apartments

Welcome to St John's Square, a striking new development offering beautifully designed, brand-new apartments within an exclusive gated

community. Set in a prime Southsea location, this landmark development blends contemporary living with character, security, and green open spaces.

Each apartment has been thoughtfully designed with modern layouts and quality finishes, delivering light-filled interiors that balance comfort and style. The development sensitively reimagines former school buildings alongside contemporary new-build homes, creating a unique mix of period charm and modern luxury.

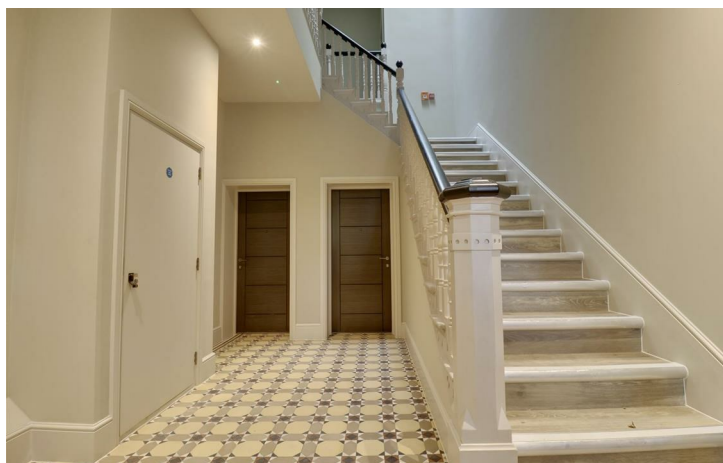
St John's Square is more than just a place to live — it's a community designed for modern lifestyles in one of the South Coast's most vibrant neighbourhoods.

Amazing incentives available — speak to one of our team to find out more.

Call today to arrange a viewing  
[www.bernardsea.co.uk](http://www.bernardsea.co.uk)







Call today to arrange a viewing  
[www.bernardsestates.co.uk](http://www.bernardsestates.co.uk)





# PROPERTY INFORMATION

**Trusted craftsmanship, timeless quality**  
At St John's Square, every detail has been carefully chosen—not just for how it looks, but for how it lasts.

Our interiors feature a selection of respected, high-quality brand partners, chosen for their design integrity, proven performance and heritage of craftsmanship.

## KITCHENS

Step into a space where elegance meets everyday ease. Thoughtfully designed kitchens by Paula Rosa pair timeless craftsmanship with modern functionality, while Caesarstone quartz worktops and black nickel boiler taps\* add a refined, durable finish. It's a setting made for slow breakfasts, lively dinners, and everything in between.

With decades of British kitchen-making expertise, Paula Rosa delivers modern kitchens built for real life—where thoughtful layouts meet precision engineering and timeless appeal. -Grand Bardolino Oak & Pebble Grey

## LIVING AREAS

Effortlessly stylish and built for comfort, the living spaces at St John's Square are designed for real life. Underfoot, Amtico flooring brings British-made quality and craftsmanship to every step: beautiful, durable, and made to last. Soft neutral tones, clean lines, and carefully considered textures create a calm, contemporary setting for quiet evenings, relaxed weekends, or time well spent with others.

## SURFACES

Premium quartz surfaces crafted with precision, durability and timeless design—Caesarstone worktops bring the beauty of natural minerals into the heart of your kitchen, forming a lasting foundation for daily life.-- White Arabesque

## FLOORING

Manufactured in the UK and trusted for generations, Amtico's expertly crafted flooring offers warmth, texture and quiet resilience—bringing enduring character

underfoot. - Kirkby Oak \*not included in bedrooms\*

## BATHROOMS

The bathroom is a calm, considered space where clean lines, rainfall showers and soft, neutral tones set a spa-like tone. Porcelanosa tiles and brushed nickel fittings add a refined edge, while a generous storage vanity ensures practicality meets quiet luxury – whether you're getting ready for the day or winding down with a long evening soak.

Renowned for refined finishes and innovative design, Porcelanosa tiles bring a sense of understated luxury to every bathroom— combining durability with effortless style.- Coral Caliza

## KITCHEN/LIVING/DINING ROOM

29'7" x 10'2" (9.04 x 3.10)

## BEDROOM 1

15'1" x 8'7" (4.60 x 2.62)

## BEDROOM 2

13'5" x 8'9" (4.11 x 2.69)

## BATHROOM

7'4" x 11'6" (2.26 x 3.51)

## Marketing Suite Opening Hours

Monday – Thursday 8:45am-6pm  
Friday 8:45am-5:30pm  
Saturday 9am-4pm

Customer parking available on-site

\*NO APPOINTMENT NECESSARY\*

## Disclaimer

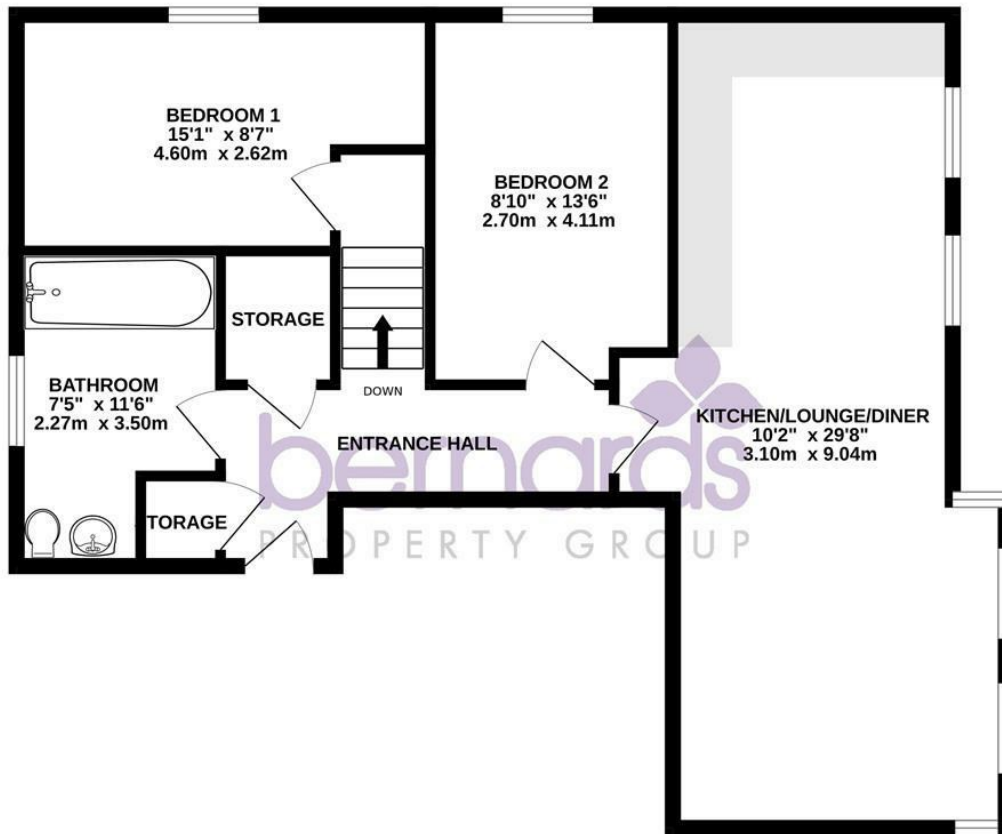
\*\*These images are CGI representations of the likely finished appearance. The final look, materials, and landscaping may vary slightly. For full details, please contact the sales suite\*\*



Energy Efficiency Rating		
	Current	Potential
Very energy efficient - lower running costs		
(92 plus) A		
(81-91) B		
(69-80) C		
(55-68) D		
(39-54) E		
(21-38) F		
(1-20) G		
Not energy efficient - higher running costs		
	75	75
EU Directive 2002/91/EC		
England & Wales		



1ST FLOOR  
829 sq.ft. (77.0 sq.m.) approx.



TOTAL FLOOR AREA : 829 sq.ft. (77.0 sq.m.) approx.

Whilst every attempt has been made to ensure the accuracy of the floorplan contained here, measurements of doors, windows, rooms and any other items are approximate and no responsibility is taken for any error, omission or mis-statement. This plan is for illustrative purposes only and should be used as such by any prospective purchaser. The services, systems and appliances shown have not been tested and no guarantee as to their operability or efficiency can be given.

Made with Metropix 62026

