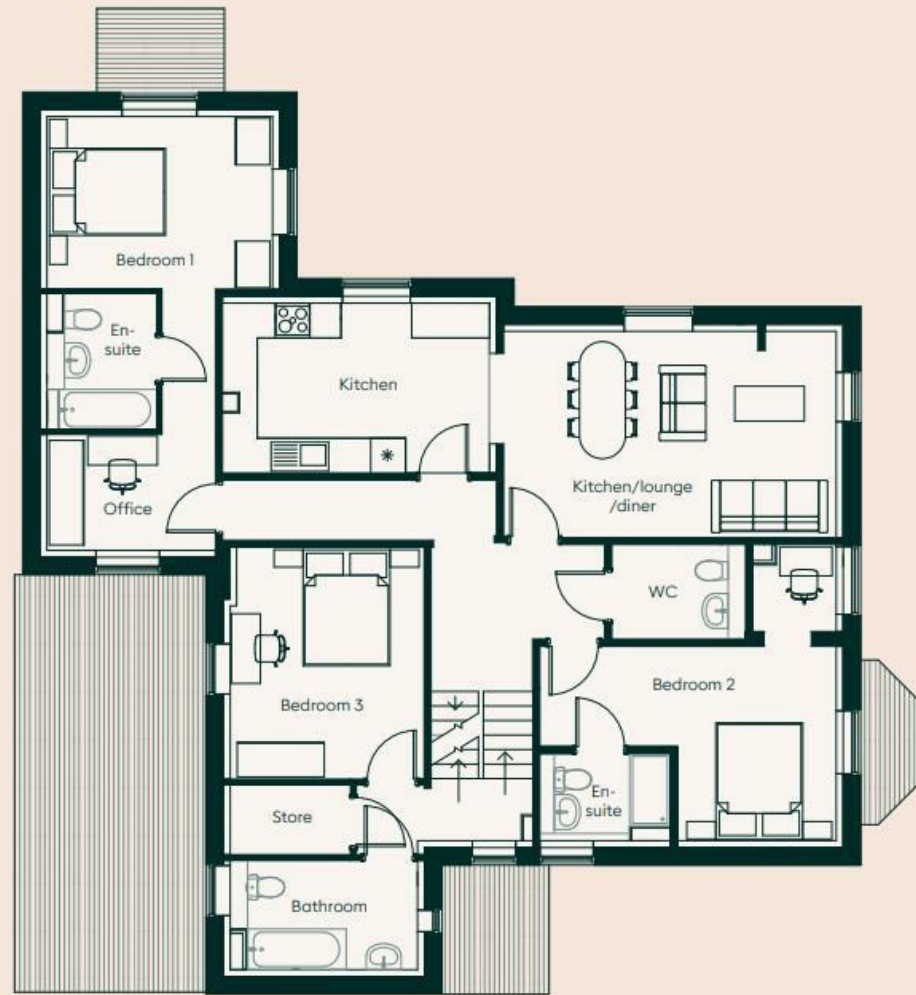




£600,000

Juniper Gardens, Southsea PO5 3QS

bernards  
THE ESTATE AGENTS



## HIGHLIGHTS

- Show apartment now open, no appointment necessary
- Be a part of Southsea's rich history with these sympathetically retained and restored properties
- Paula Rosa Kitchens with all white goods integrated and Caesarstone quartz worktops
- Amico Flooring throughout kitchen/living/dining and hallway areas
- Porcelanosa bathroom tiles in all apartments
- Convenient on-site Car Club provided by Enterprise with the first year of membership provided free of charge
- Gated Development, A community within a community, just a short walk from all local amenities
- Landscaped gardens and mature trees harmonising with new planting to provide tranquil spaces
- On-site parking available for residents with access to EV charging points across the development
- Ofsted Outstanding eco-nursery offering play-led learning in a natural setting

Phase 1 Now Fully Released and Ready for Occupation at St John's Square, Southsea.

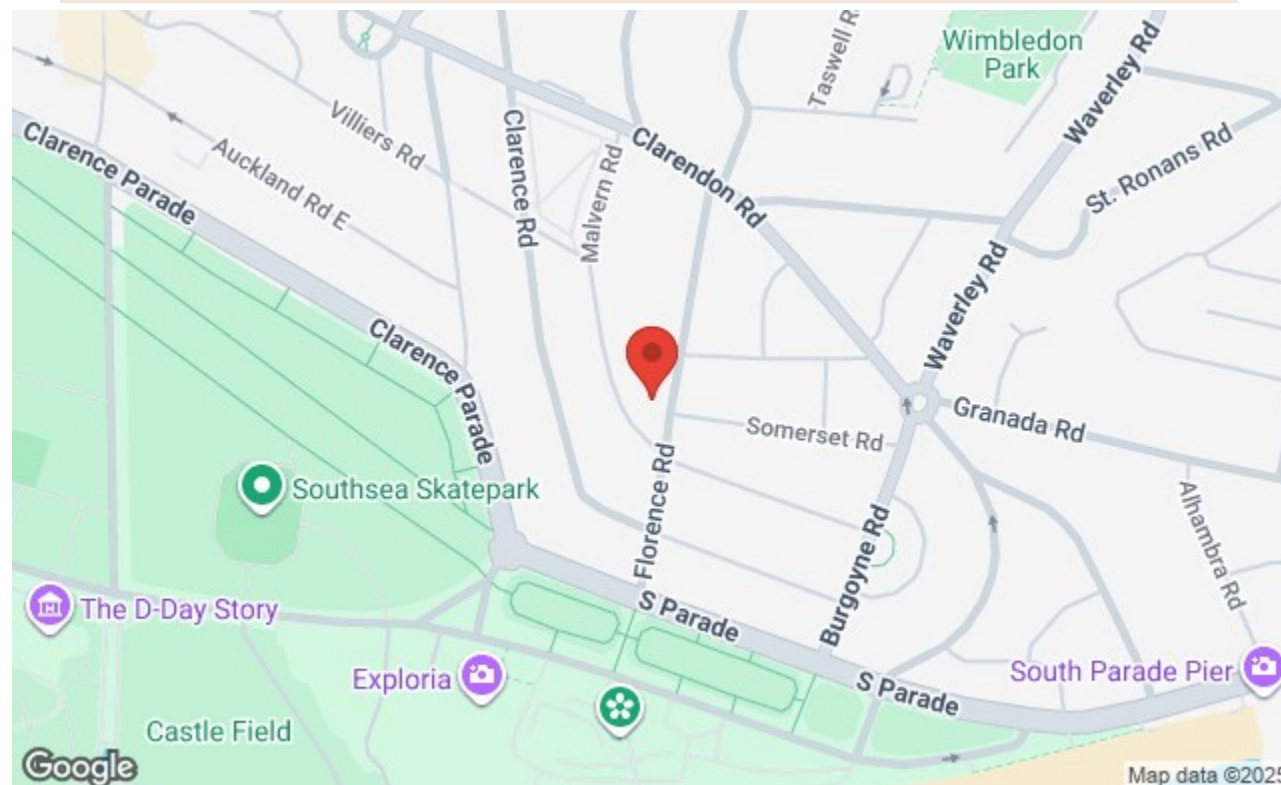
Discover beautifully designed homes in this sought-after new development. Modern layouts, premium finishes, and a vibrant gated community, all waiting to be explored.

St John's Square is a local landmark reimagined for modern living; an exclusive collection of characterful homes with high-spec interiors, set in one of the South Coast's most vibrant neighbourhoods. With the seafront, Southsea Common, independent shops, and the King's Theatre all nearby, this is a place where comfort, connection, and a sense of belonging come together.

St John's Square sustainably reuses and reimagines former school buildings, complementing characterful details with contemporary luxury and the clean lines of sensitively-designed new-builds. Mature trees and newly-planted gardens add to the sense of a perfect balance between new and old.

At St John's Square, period charm and contemporary design sit side by side: some homes set within reimagined heritage buildings, others newly built to complement their setting. Inside, each apartment pairs quality finishes and modern comfort with a subtle sense of character and space.

Amazing Incentives Available – Speak to one of our team to find out more!



t:

Call today to arrange a viewing  
[www.bernardsestates.co.uk](http://www.bernardsestates.co.uk)





# PROPERTY INFORMATION

## TRUSTED CRAFTSMANSHIP, TIMELESS QUALITY

At St John’s Square, every detail has been carefully chosen—not just for how it looks, but for how it lasts.

Our interiors feature a selection of respected, high-quality brand partners, chosen for their design integrity, proven performance and heritage of craftsmanship.

## KITCHENS

Step into a space where elegance meets everyday ease. Thoughtfully designed kitchens by Paula Rosa pair timeless craftsmanship with modern functionality, while Caesarstone quartz worktops and black nickel boiler taps\* add a refined, durable finish. It’s a setting made for slow breakfasts, lively dinners, and everything in between.

With decades of British kitchen-making expertise, Paula Rosa delivers modern kitchens built for real life—where thoughtful layouts meet precision engineering and timeless appeal. - Grand Bardolino Oak & Pebble Grey

## LIVING AREAS

Effortlessly stylish and built for comfort, the living spaces at St John’s Square are designed for real life. Underfoot, Amtico flooring brings British-made quality and craftsmanship to every step: beautiful, durable, and made to last. Soft neutral tones, clean lines, and carefully considered textures create a calm, contemporary setting for quiet evenings, relaxed weekends, or time well spent with others.

## SURFACES

Premium quartz surfaces crafted with precision, durability and timeless design—Caesarstone worktops bring the beauty of natural minerals into the heart of your kitchen, forming a lasting foundation for daily life.-- White Arabesque

## FLOORING

Manufactured in the UK and trusted for generations, Amtico’s expertly crafted flooring offers warmth, texture and quiet resilience—bringing enduring character underfoot. - Kirkby Oak \*not included in bedrooms\*

## BATHROOMS

The bathroom is a calm, considered space where clean lines, rainfall showers and soft, neutral tones set a spa-like tone. Porcelanosa tiles and brushed nickel fittings add a refined edge, while a generous storage vanity ensures practicality meets quiet luxury – whether you’re getting ready for the day or winding down with a long evening soak.

Renowned for refined finishes and innovative design, Porcelanosa tiles bring a sense of understated luxury to every bathroom— combining durability with effortless style.- Coral Caliza

## KITCHEN

14’9" x 9’6" (4.5 x 2.9)

## LOUNGE/DINING

19’0" x 11’1" (5.8 x 3.4)

## BEDROOM 1

8’10" x 12’1" (2.7 x 3.7)

## DRESSING AREA/OFFICE

7’2" x 9’2" (2.2 x 2.8)

## BEDROOM 2

10’9" x 16’8" (3.3 x 5.1)

## BEDROOM 3

12’9" x 10’9" (3.9 x 3.3)

## BATHROOM 1

6’2" x 10’9" (1.9 x 3.3)

## BEDROOM 4

10’9" x 12’5" (3.3 x 3.8)

## BATHROOM 2

10’9" x 6’2" (3.3 x 1.9)

## MARKETING SUITE OPENING HOURS

Monday – Thursday 8:45am-6pm  
Friday 8:45am-5:30pm  
Saturday 9am-4pm

Customer parking available on-site

\*NO APPOINTMENT NECESSARY\*

## DISCLAIMER

\*\*These images are CGI representations of the likely finished appearance. The final look, materials, and landscaping may vary slightly. For full details, please contact the sales suite\*\*



Energy Efficiency Rating		
	Current	Potential
Very energy efficient - lower running costs		
(92 plus) A		
(81-91) B		
(69-80) C	74	74
(55-68) D		
(39-54) E		
(21-38) F		
(1-20) G		
Not energy efficient - higher running costs		
England & Wales	EU Directive 2002/91/EC	



Call today to arrange a viewing  
[www.bernardsestates.co.uk](http://www.bernardsestates.co.uk)

