

£500,000

Grove Road South, Southsea PO5  
3QS

**bernards**  
THE ESTATE AGENTS



## St John's Square

### Upcoming Open Events

7th & 8th February 10am – 4pm

## HIGHLIGHTS

- Stunning three bedroom apartment
- Beautifully presented building nestled by landscaped gardens
- Top floor south facing kitchen/living area with excellent views
- Antico Flooring throughout kitchen/living/dining and hallway areas
- Original restored period features
- Secure video entry system on car entrance gates and communal entrances
- A community within a community, just a short walk from all local amenities
- Modern kitchen with integrated appliances and instant hot water tap
- On-site parking available for residents with access to EV charging points across the development
- Ofsted Outstanding eco-nursery offering play-led learning in a natural setting

Woodlands – Move in ready!

We are delighted to present this stunning, three bedroom second floor apartment in the heart of Central Southsea, complete with secure, gated parking.

Thoughtfully restored, the property was once part of the historic St John's College, blending heritage and charm with modern luxury.

Situated within the exclusive St John's Square development, the beautiful Woodlands Villa comprises five newly converted apartments, each offering high-end finishes throughout within a private, secure gated development.

Set within beautifully landscaped gardens, this truly unique three-bedroom apartment is bathed in natural light throughout. Accessed via a well-kept communal hallway, and spanning the full second

floor of the building, the home offers an exceptional sense of space, opening from a private hallway into a stylish open-plan lounge, kitchen, and dining area. The contemporary kitchen is fully fitted with integrated appliances and finished with Caesarstone worktops, perfectly suited to refined modern living.

The accommodation further comprises a master bedroom with en-suite walk-in shower, two additional impressive double bedrooms, a dedicated office space, and a beautifully appointed family bathroom featuring a rainfall shower.

Amazing incentives available – speak to one of our team to find out more.

Call today to arrange a viewing  
[www.bernardsea.co.uk](http://www.bernardsea.co.uk)





Call today to arrange a viewing  
[www.bernardsestates.co.uk](http://www.bernardsestates.co.uk)





# PROPERTY INFORMATION

**Trusted craftsmanship, timeless quality**  
At St John's Square, every detail has been carefully chosen—not just for how it looks, but for how it lasts.

Our interiors feature a selection of respected, high-quality brand partners, chosen for their design integrity, proven performance and heritage of craftsmanship.

## KITCHENS

Step into a space where elegance meets everyday ease. Thoughtfully designed kitchens by Paula Rosa pair timeless craftsmanship with modern functionality, while Caesarstone quartz worktops and black nickel boiler taps\* add a refined, durable finish. It's a setting made for slow breakfasts, lively dinners, and everything in between.

With decades of British kitchen-making expertise, Paula Rosa delivers modern kitchens built for real life—where thoughtful layouts meet precision engineering and timeless appeal. -Grand Bardolino Oak & Pebble Grey

## LIVING AREAS

Effortlessly stylish and built for comfort, the living spaces at St John's Square are designed for real life. Underfoot, Amtico flooring brings British-made quality and craftsmanship to every step: beautiful, durable, and made to last. Soft neutral tones, clean lines, and carefully considered textures create a calm, contemporary setting for quiet evenings, relaxed weekends, or time well spent with others.

## SURFACES

Premium quartz surfaces crafted with precision, durability and timeless design—Caesarstone worktops bring the beauty of natural minerals into the heart of your kitchen, forming a lasting foundation for daily life.-- White Arabesque

## FLOORING

Manufactured in the UK and trusted for generations, Amtico's expertly crafted flooring offers warmth, texture and quiet resilience—bringing enduring character

underfoot. - Kirkby Oak \*not included in bedrooms\*

## BATHROOMS

The bathroom is a calm, considered space where clean lines, rainfall showers and soft, neutral tones set a spa-like tone. Porcelanosa tiles and brushed nickel fittings add a refined edge, while a generous storage vanity ensures practicality meets quiet luxury – whether you're getting ready for the day or winding down with a long evening soak.

Renowned for refined finishes and innovative design, Porcelanosa tiles bring a sense of understated luxury to every bathroom— combining durability with effortless style.- Coral Caliza

## KITCHEN/LOUNGE/DINING ROOM

11'10" x 29'11" (3.61 x 9.14)

## BEDROOM 1

12'0" x 11'10" (3.68 x 3.63)

## BEDROOM 2

14'11" x 8'7" (4.55 x 2.62)

## BEDROOM 3

12'4" x 10'7" (3.78 x 3.23)

## OFFICE

4'11" x 4'9" (1.52 x 1.47)

## BATHROOM

6'3" x 5'8" (1.91 x 1.75)

## Marketing Suite Opening Hours

Monday – Thursday 8:45am-6pm  
Friday 8:45am-5:30pm  
Saturday 9am-4pm

Customer parking available on-site

\*NO APPOINTMENT NECESSARY\*

## Disclaimer

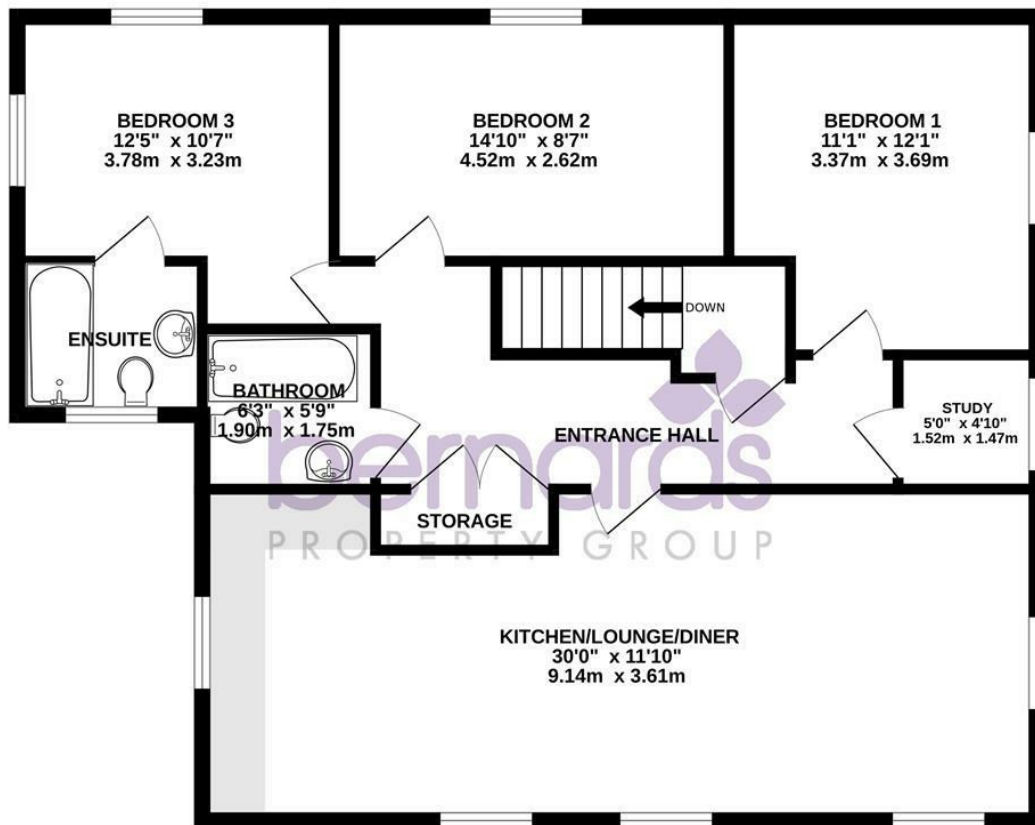
\*\*These images are CGI representations of the likely finished appearance. The final look, materials, and landscaping may vary slightly. For full details, please contact the sales suite\*\*



Energy Efficiency Rating		
	Current	Potential
Very energy efficient - lower running costs		
(92 plus) A		
(81-91) B		
(69-80) C	76	76
(55-68) D		
(39-54) E		
(21-38) F		
(1-20) G		
Not energy efficient - higher running costs		
England & Wales	EU Directive 2002/91/EC	

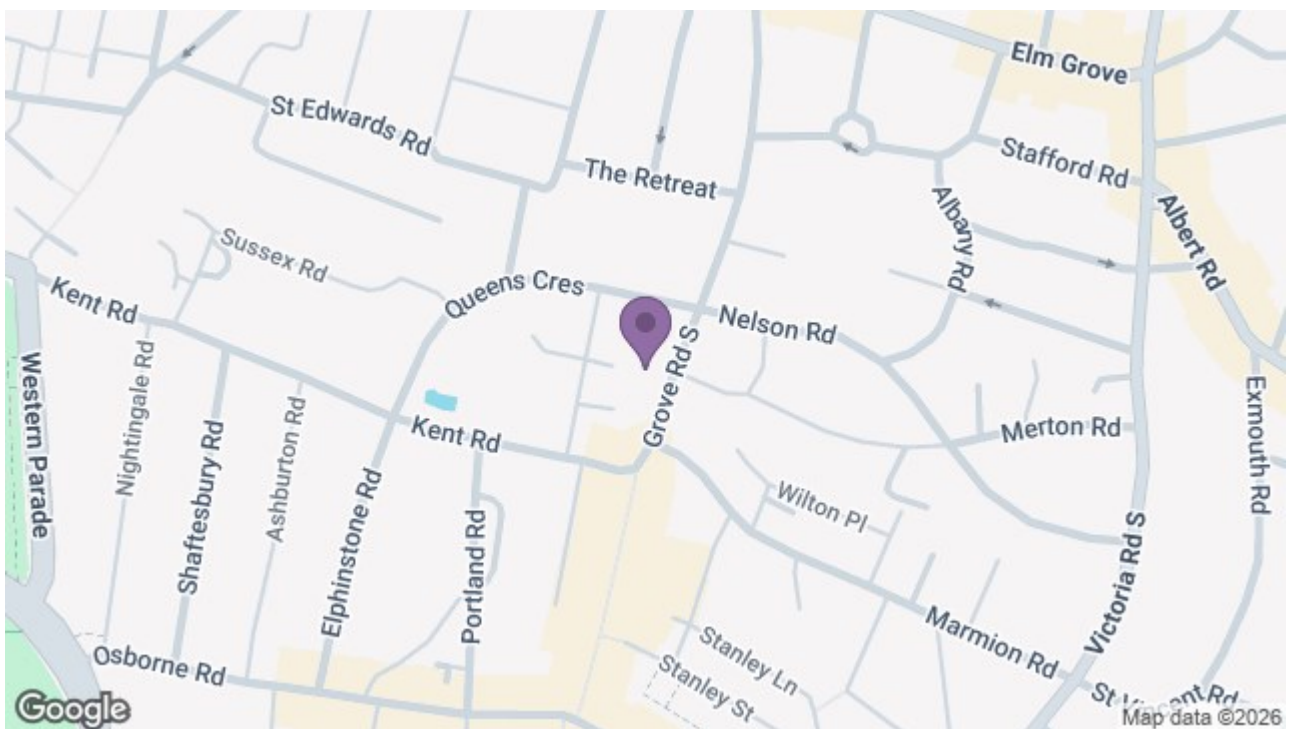


2ND FLOOR  
1036 sq.ft. (96.2 sq.m.) approx.



TOTAL FLOOR AREA : 1036 sq.ft. (96.2 sq.m.) approx.

Whilst every attempt has been made to ensure the accuracy of the floorplan contained here, measurements of doors, windows, rooms and any other items are approximate and no responsibility is taken for any error, omission or mis-statement. This plan is for illustrative purposes only and should be used as such by any prospective purchaser. The services, systems and appliances shown have not been tested and no guarantee as to their operability or efficiency can be given.  
Made with Metropix ©2026



t

