

£1,200 Per Calendar Month

Osborne Road, Southsea PO5 3LR

bernards
THE ESTATE AGENTS



HIGHLIGHTS

- ❖ TWO BEDROOMS
- ❖ TWO BATHROOMS
- ❖ SEA VIEWS
- ❖ UTILITY AREA
- ❖ WHITE GOODS
- ❖ FURNISHED
- ❖ GAS CENTRAL HEATING INCLUDED
- ❖ WATER BILL INCLUDED
- ❖ AVAILABLE NOW
- ❖ IDEAL FOR PROFESSIONAL SHARERS

****TWO BEDROOMS TWO BATHROOMS****

A spacious, two bedroom, two bathroom apartment with SEA VIEWS in a great Southsea location! Moments from Palmerston Road, Southsea Common & the Seafront.

Comprising of two double sized bedrooms, both with en suites and

sea views from each room, this makes for the ideal apartment. The kitchen is equipped with white goods and offers a separate utility space. The lounge offers great views over Southsea Common and the seafront.

Gas central heating & water bills included. Super fast Virgin Media wifi can be added for £28.00 PCM. Available now. Furnished.

Call today to arrange a viewing
02392 864 974
www.bernardsestates.co.uk





Call today to arrange a viewing
02392 864 974
www.bernardsestates.co.uk



PROPERTY INFORMATION

Tenant Fees Act 2019

As well as paying the rent, you may also be required to make the following permitted payments.

For properties in England, the Tenant Fees Act 2019 means that in addition to rent, lettings agents can only charge tenants (or anyone acting on the tenant's behalf) the following permitted payments:

- Holding deposits (a maximum of 1 week's rent);
- Deposits (a maximum deposit of 5 weeks' rent for annual rent below £50,000, or 6 weeks' rent for annual rental of £50,000 and above);
- Payments to change a tenancy agreement eg. change of sharer (capped at £50 or, if higher, any reasonable costs);
- Payments associated with early termination of a tenancy (capped at the landlord's loss or the agent's reasonably incurred costs);
- Where required, utilities (electricity, gas or other fuel, water, sewerage), communication services (telephone, internet, cable/satellite television), TV licence;
- Council tax (payable to the billing authority);

- Interest payments for the late payment of rent (up to 3% above Bank of England's annual percentage rate);
- Reasonable costs for replacement of lost keys or other security devices;
- Contractual damages in the event of the tenant's default of a tenancy agreement; and
- Any other permitted payments under the Tenant Fees Act 2019 and regulations applicable at the relevant time.

Right to Rent

Each applicant will be subject to the right to rent checks. This is a government requirement since February 2016. We are required to check and take a copy of the original version of acceptable documentation in order to adhere to the Right to rent checks. This will be carried out at referencing stage. Please speak to a member of staff for acceptable Identification.

Removal Quotes

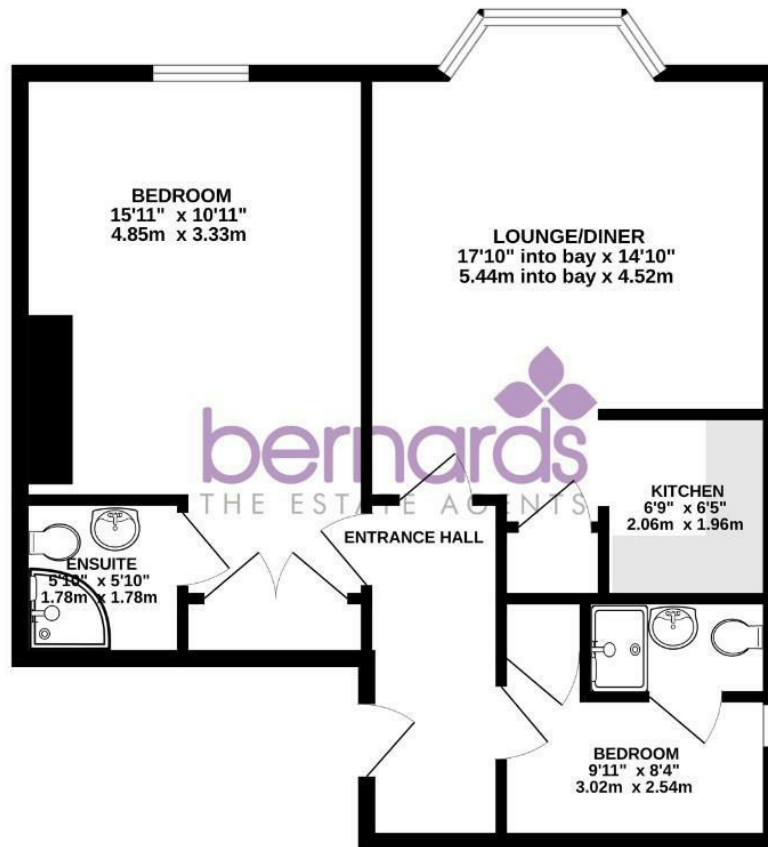
As part of our drive to assist clients with all aspects of the moving process, we have sourced a reputable removal company. Please ask a member of our sales team for further details and a quotation.



Energy Efficiency Rating		
	Current	Potential
Very energy efficient - lower running costs		
(92 plus) A		
(81-91) B		
(69-80) C		
(55-68) D		
(39-54) E		
(21-38) F		
(1-20) G		
Not energy efficient - higher running costs		
England & Wales		
EU Directive 2002/91/EC		

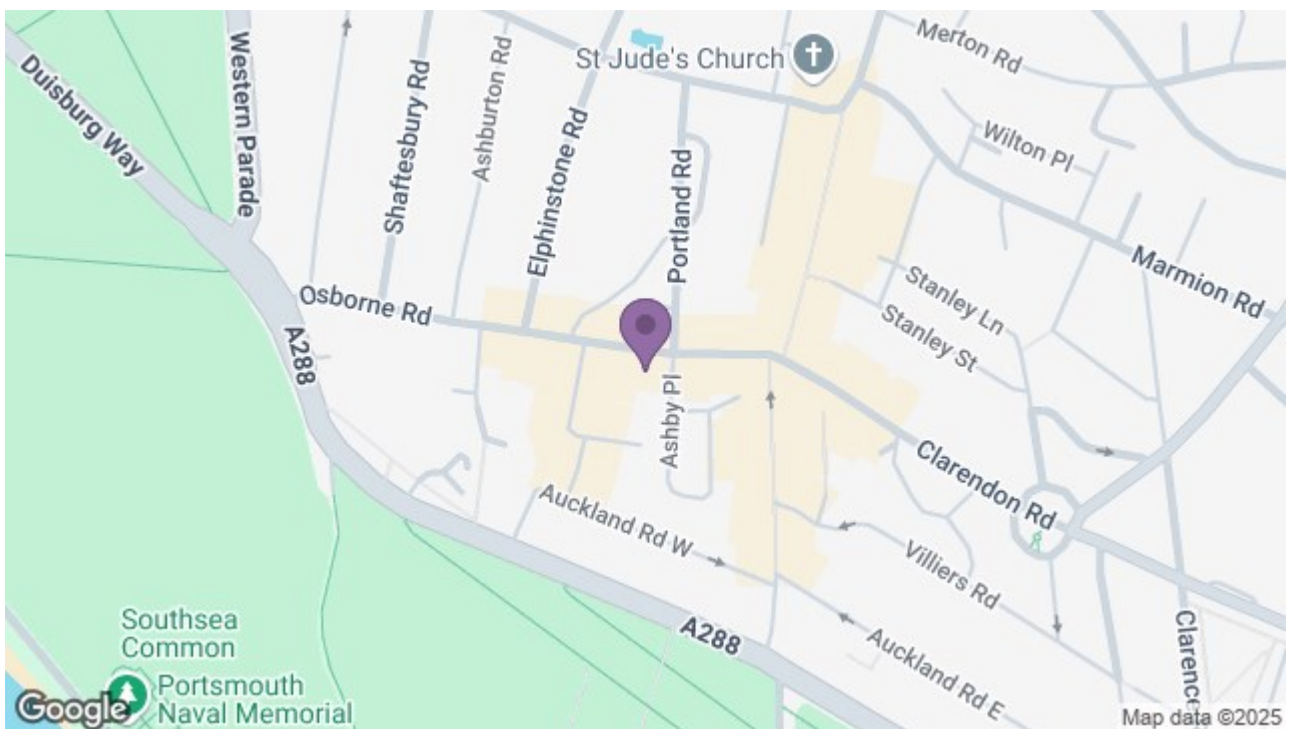


2ND FLOOR
612 sq.ft. (56.8 sq.m.) approx.



TOTAL FLOOR AREA : 612 sq.ft. (56.8 sq.m.) approx.

Whilst every attempt has been made to ensure the accuracy of the floorplan contained here, measurements of doors, windows, rooms and any other items are approximate and no responsibility is taken for any error, omission or mis-statement. This plan is for illustrative purposes only and should be used as such by any prospective purchaser. The services, systems and appliances shown have not been tested and no guarantee as to their operability or efficiency can be given.
Made with Metropix ©2023



8 Clarendon Road, Southsea, Hampshire, PO5 2EE
t: 02392 864 974

