

TO
LET

£1,350 PCM

Queen Street, Portsmouth, PO1 3GB



HIGHLIGHTS

- ADMIRALTY QUARTER
- FULLY FURNISHED
- TWO DOUBLE BEDROOMS
- LARGE BALCONY
- OPEN PLAN
- 24 HR CONCIERGE
- LIFT ACCESS
- HIGHLY SOUGHT AFTER LOCATION
- AVAILABLE SEPTEMBER
- A MUST VIEW

A two bedroom furnished apartment in the much requested Admiralty Quarter development, having the advantage of a large balcony from the lounge.

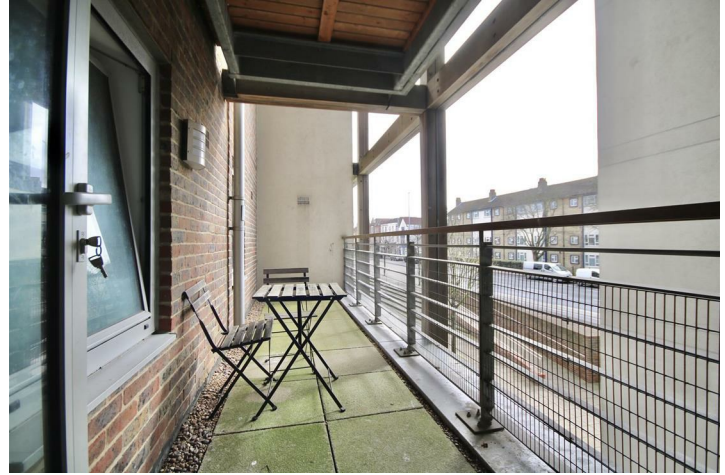
The accommodation comprises entrance hall leading to a good size reception room with a stylish open plan kitchen with appliances. The master is a spacious double bedroom with built in wardrobe. Moving through the second bedroom is also double in size with free-standing wardrobes.

Completing the property is the modern three-piece bathroom.

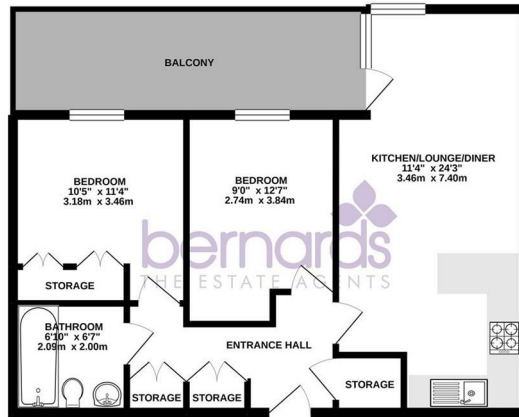
Further benefits include 24 hour concierge, lift access, fabulous communal gardens and a brilliant location moments from transport links and Gunwharf Quays!

Offered furnished & available September 2024.





FIRST FLOOR
613 sq.ft. (56.9 sq.m.) approx.



TOTAL FLOOR AREA: 613 sq.ft. (56.9 sq.m.) approx.
 Whilst every attempt has been made to ensure the accuracy of this floor plan, the agent does not accept any liability for any errors or omissions in this information. This plan is for information purposes only and should be used in conjunction with the actual property. The approach, location and appearance of the property may vary from the floor plan and the pictures. We do not warrant the accuracy of this information.
 Made with Bernard's 2024



Energy Efficiency Rating		
	Current	Potential
Very energy efficient - lower running costs		
(92 plus) A		
(81-91) B		
(69-80) C	69	70
(55-68) D		
(39-54) E		
(21-38) F		
(1-20) G		
Not energy efficient - higher running costs		
England & Wales		EU Directive 2002/91/EC

