

TO
LET

£1,100 PCM

Strand Court, Eastern Villas Road,
Southsea, PO4 0SU



HIGHLIGHTS

- ❖ TWO BEDROOMS
- ❖ TOP FLOOR APARTMENT
- ❖ CENTRAL SOUTHSEA
- ❖ GARAGE
- ❖ LARGE LOUNGE
- ❖ ELEVATED VIEWS
- ❖ CLOSE TO AMENITIES
- ❖ UNFURNISHED
- ❖ AVAILABLE MAY 2024
- ❖ A MUST VIEW

Welcome to this charming property located in the sought-after area of Strand Court, Eastern Villas Road, Southsea. This delightful flat boasts a cosy reception room, perfect for relaxing or entertaining guests. With two bedrooms, there is ample space for a small family, guests, or even a home office.

The property features a well-maintained bathroom, ensuring convenience and comfort for the residents. Situated in a purpose-built block, this flat offers a sense of community and security.

One of the standout features of this property is the private garage, offering parking for one vehicle. In a location where parking can be a premium, having your own designated space is a true luxury.

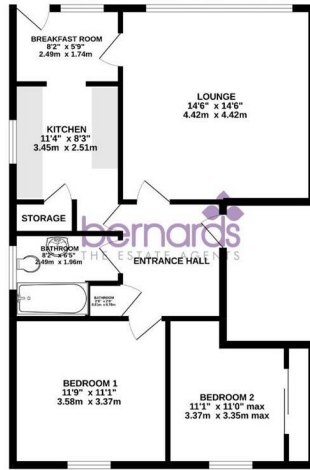
If you are looking for a new home, this property has great potential. Don't miss the chance to rent a property in this vibrant neighborhood in Southsea. Contact us today to arrange a viewing and experience the charm of Strand Court living for yourself.

Available for an initial SIX MONTH let.





TOP FLOOR
712 sq. ft. (66.1 sq.m.) approx.



TOTAL FLOOR AREA: 712 sq.ft. (66.1 sq.m.) approx.



Energy Efficiency Rating		Current	Potential
Very energy efficient - lower running costs			
(92 plus)	A		
(81-91)	B		
(69-80)	C		
(55-68)	D	57	62
(39-54)	E		
(21-38)	F		
(1-20)	G		
Not energy efficient - higher running costs			
England & Wales		EU Directive 2002/91/EC	

