



2 Kent Place, Kettering NN15 6JU

£225,000

A wonderful three bedroom family home located in a cul de sac and set on a large plot with fantastic south facing views to the rear. This property is offered for sale with NO UPWARD CHAIN and very well presented throughout benefiting from a fitted kitchen with built in appliances, gas central heating, upvc double glazed and modern bathroom suite. There is ample off road parking on the driveway. Located on the outskirts of town being well placed for shops, schools and of course Wicksteed park. Viewing essential.

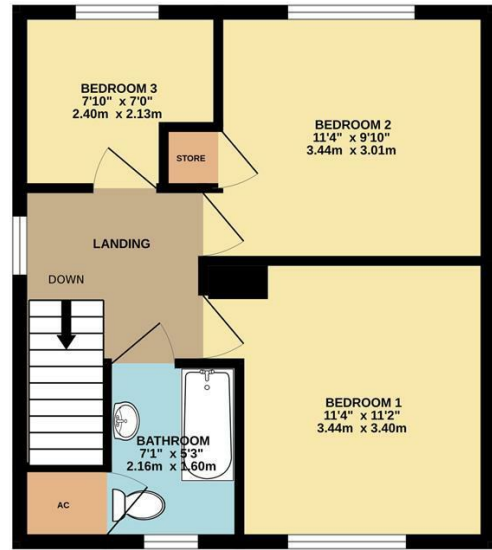
Tenure: Freehold
Energy Rating: C
Council Tax Band: A

LUCAS
 SALES & LETTINGS

GROUND FLOOR
418 sq.ft. (38.8 sq.m.) approx.



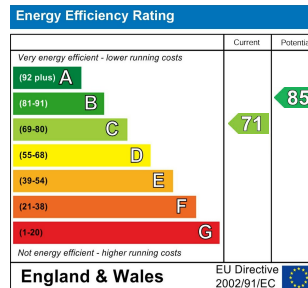
1ST FLOOR
387 sq.ft. (35.9 sq.m.) approx.



TOTAL FLOOR AREA: 804 sq.ft. (74.7 sq.m.) approx.

Whilst every attempt has been made to ensure the accuracy of the floorplan contained here, measurements of doors, windows, rooms and any other items are approximate and no responsibility is taken for any error, omission or mis-statement. This plan is for illustrative purposes only and should be used as such by any prospective purchaser. The services, systems and appliances shown have not been tested and no guarantee as to their operability or efficiency can be given.
Made with Metropix ©2025

- No Upward Chain
- Three Bedrooms
- Large Garden
- Modern Kitchen And Bathroom
- Gas Central Heating
- Off Road Parking
- Double Glazed
- Very Well Presented



2 Silver Street, Kettering,
Northamptonshire, NN16 0BN
Tel: 01536 312 600

sales@lucasestateagents.co.uk

Important: We would like to inform prospective purchasers that these sales particulars have been prepared in good faith as a general guide only. A survey has not been carried out, nor the services, appliances and fittings tested. All measurements are approximate; sizes should not be relied upon for furnishing, or any other purposes. Floor plans are for guidance and illustration purposes only and are not to scale. Photos are taken with a wide angle lens. Items shown in the photographs are expressly excluded unless agreed otherwise in writing. If there are any matters likely to affect your decision to buy, please contact us before viewing the property and clarify all matters prior to offer. L786

LUCAS
SALES & LETTINGS