



## 41 Gordon Street, Kettering NN16 0RX

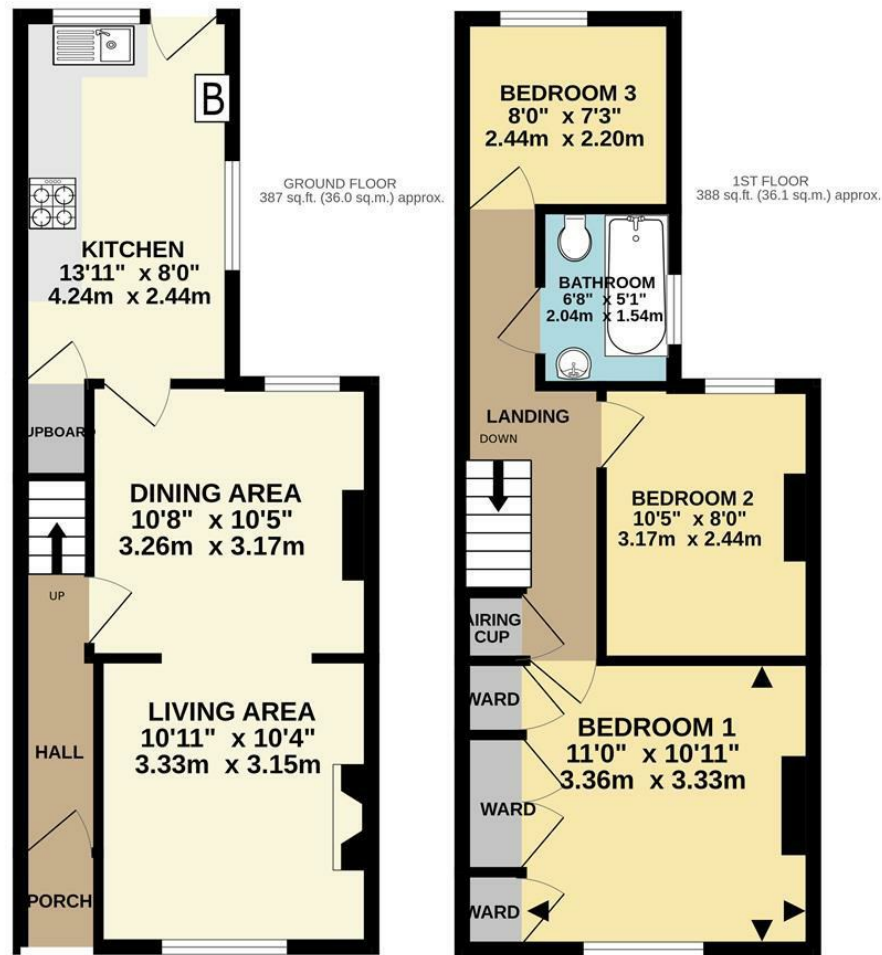
### Offers Over £165,000

A 3 bedroom terrace house located to the eastern side of Kettering and within a ten minute walk of the centre of town and less than 20 minutes from the mainline station with frequent direct services south to London St Pancras International of under an hour and with regular services north via Leicester. The accommodation has double glazing and gas central heating. On the ground floor there is a double aspect living room and good sized kitchen. The first floor offers 3 bedrooms and bathroom with electric shower over the bath. The enclosed rear garden, which is accessed on foot from Russell Street, is not directly overlooked from behind. No onward chain. Call Lucas now a book a viewing.

**Tenure: Freehold**  
**Energy Rating: D**  
**Council Tax Band: A**

**LUCAS**  
 SALES & LETTINGS



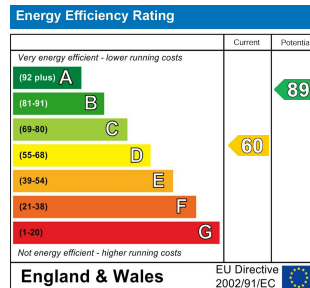


TOTAL FLOOR AREA: 776 sq.ft. (72.1 sq.m.) approx.

Whilst every attempt has been made to ensure the accuracy of the floorplan contained here, measurements of doors, windows, rooms and any other items are approximate and no responsibility is taken for any error, omission or mis-statement. This plan is for illustrative purposes only and should be used as such by any prospective purchaser. The services, systems and appliances shown have not been tested and no guarantee as to their operability or efficiency can be given.

Made with Metroplex ©2025

- 3 bedroom family home with first floor bathroom
- Gas central heating, PVC double glazed windows
- Double aspect living room and good sized kitchen
- Enclosed rear garden not overlooked from the rear
- NO CHAIN



2 Silver Street, Kettering,  
Northamptonshire, NN16 0BN  
Tel: 01536 312 600

sales@lucasestateagents.co.uk

Important: We would like to inform prospective purchasers that these sales particulars have been prepared in good faith as a general guide only. A survey has not been carried out, nor the services, appliances and fittings tested. All measurements are approximate; sizes should not be relied upon for furnishing, or any other purposes. Floor plans are for guidance and illustration purposes only and are not to scale. Photos are taken with a wide angle lens. Items shown in the photographs are expressly excluded unless agreed otherwise in writing. If there are any matters likely to affect your decision to buy, please contact us before viewing the property and clarify all matters prior to offer. L786

**LUCAS**  
SALES & LETTINGS