



29 Shelley Road, Kettering NN16 9LD Offers In Excess Of £400,000

A stunning FOUR DOUBLE BEDROOM family home located in the popular North Ward of Kettering. Located to many facilities to include schools, shops, open parkland and with the town center within easy reach this is a super area. The property has been extended and updated now offering extensive accommodation comprising of a large hall, wc, lounge, workshop/utility, large open plan kitchen/sitting and dining area, landing, four bedrooms, en suite bathroom and shower/wc. Outside there is a large south facing garden with a formal lawn, patio and a wonderful covered gazebo over a raised timber deck with a built garden BBQ ideal for entertaining. Viewing is strongly recommended.

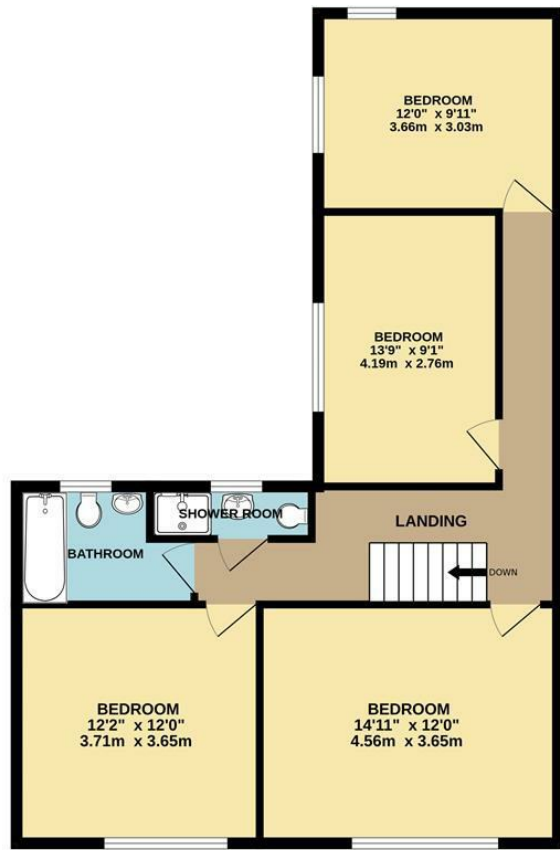
Tenure: Freehold
Energy Rating: C
Council Tax Band: C

LUCAS
SALES & LETTINGS

GROUND FLOOR
1042 sq.ft. (96.8 sq.m.) approx.



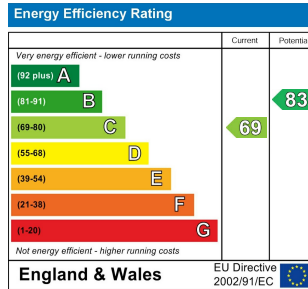
1ST FLOOR
770 sq.ft. (71.5 sq.m.) approx.



TOTAL FLOOR AREA : 1812 sq.ft. (168.3 sq.m.) approx.

Whilst every attempt has been made to ensure the accuracy of the floorplan contained here, measurements of doors, windows, rooms and any other items are approximate and no responsibility is taken for any error, omission or mis-statement. This plan is for illustrative purposes only and should be used as such by any prospective purchaser. The services, systems and appliances shown have not been tested and no guarantee as to their operability or efficiency can be given.
Made with Metropix ©2024

- Four Double Bedrooms
- Large South Facing Garden
- Luxury Fitted Kitchen With Built In Appliance
- Wonderful Open Plan Kitchen/Lounge/Sitting Room
- En Suite
- Gas Central Heating
- Double Glazed



2 Silver Street, Kettering,
Northamptonshire, NN16 0BN
Tel: 01536 312 600

sales@lucasestateagents.co.uk

Important: We would like to inform prospective purchasers that these sales particulars have been prepared in good faith as a general guide only. A survey has not been carried out, nor the services, appliances and fittings tested. All measurements are approximate; sizes should not be relied upon for furnishing, or any other purposes. Floor plans are for guidance and illustration purposes only and are not to scale. Photos are taken with a wide angle lens. Items shown in the photographs are expressly excluded unless agreed otherwise in writing. If there are any matters likely to affect your decision to buy, please contact us before viewing the property and clarify all matters prior to offer. L786

LUCAS
SALES & LETTINGS