



29 Mill Road, Kettering NN16 0RZ £200,000

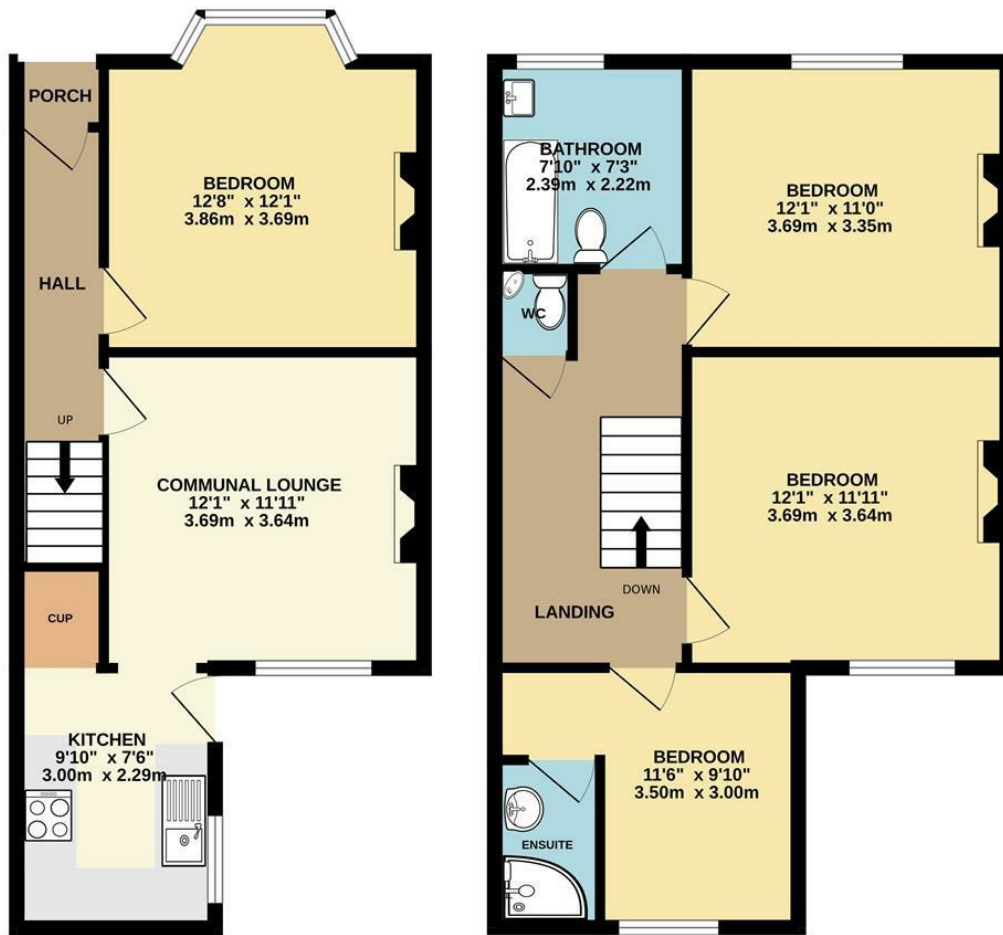
ATTENTION ALL INVESTORS. A Victorian bay fronted town house having been converted to a FOUR BEDROOM HMO. The property is located within easy reach of Kettering town center and many facilities to include schools, shops and bus routes making this an ideal location for an HMO. Benefiting from, double glazing, modern fitted kitchen and sanitary ware and well presented. Has the added benefit of off road parking to the front.

This fully occupied investment generates a gross income of £1700 per month with the potential to increase. The landlord is currently responsible for bills and we hold a breakdown on file.

For further information please call 01536312600

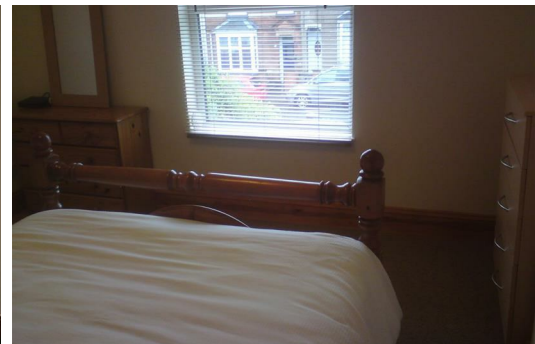
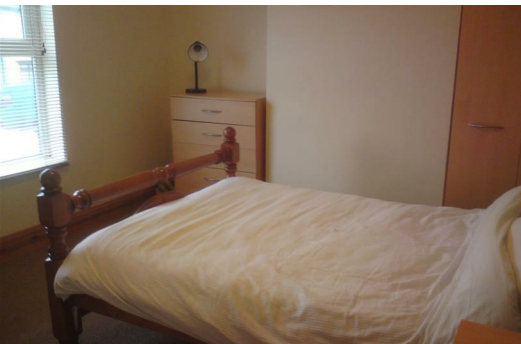
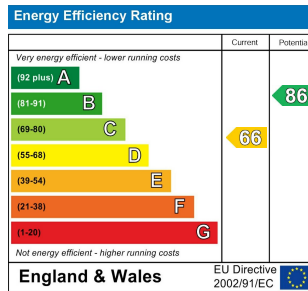
Tenure: Freehold
Energy Rating: D
Council Tax Band: A

LUCAS
SALES & LETTINGS



Whilst every attempt has been made to ensure the accuracy of the floorplan contained here, measurements of doors, windows, rooms and any other items are approximate and no responsibility is taken for any error, omission or mis-statement. This plan is for illustrative purposes only and should be used as such by any prospective purchaser. The services, systems and appliances shown have not been tested and no guarantee as to their operability or efficiency can be given.
Made with Metropix ©2024

- FOUR BEDROOM HMO INVESTMENT
- MONTHLY GROSS INCOME £1700
- GREAT LOCATION
- MODERN KITCHEN AND SANITARY WARE
- WELL PRESENTED
- OFF ROAD PARKING



2 Silver Street, Kettering,
Northamptonshire, NN16 0BN
Tel: 01536 312 600

sales@lucasestateagents.co.uk

Important: We would like to inform prospective purchasers that these sales particulars have been prepared in good faith as a general guide only. A survey has not been carried out, nor the services, appliances and fittings tested. All measurements are approximate; sizes should not be relied upon for furnishing, or any other purposes. Floor plans are for guidance and illustration purposes only and are not to scale. Photos are taken with a wide angle lens. Items shown in the photographs are expressly excluded unless agreed otherwise in writing. If there are any matters likely to affect your decision to buy, please contact us before viewing the property and clarify all matters prior to offer. L786

LUCAS
SALES & LETTINGS