



2  1  2 

Laurel Avenue, Crookham Park, Thatcham

**BELVOIR!**

£225,000





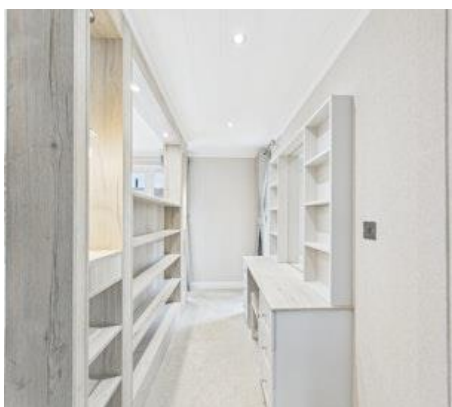
### Key Features

- > No onward chain
- > Council Tax Band: A
  - > Over 50's site
  - > Sited in 2025
  - > EPC: Exempt
- > Tenure: Leasehold

Belvoir Estate Agents - Offered to the market for sale is this immaculately presented, two bedroom park home in the ever popular development of Crookham Common. Sited in 2025 and occupying a spacious corner plot, this home offers excellent accommodation throughout.

Internal living space is comprised of two double bedrooms, an open plan kitchen / dining room, large lounge and two bathrooms.

The lounge benefits from a vaulted ceiling to offer a light and airy space, comprised of dual aspect windows, a feature electric fireplace and double doors leading through to the kitchen / dining room, where a well fitted kitchen can be found. Offering an excellent degree of base level units, the kitchen has ample storage space with integral appliances such as fridge / freezer, dishwasher, double electric ovens at eye level and a four ring gas burner. The dining area can comfortably hold a table with four seats, and has french doors leading out to a composite decking area.



Further accommodation includes two spacious double bedrooms, both with ample fitted storage. The main bedroom is a particularly generous size boasting a separate dressing room and a three piece en-suite shower room. The family bathroom again is a fitted three piece suite, offering a fitted bath with shower attachment above, toilet and hand basin.

Outside, there is a low maintenance and private garden which wraps around the property offering excellent space for entertaining. Nearby parking is also available.

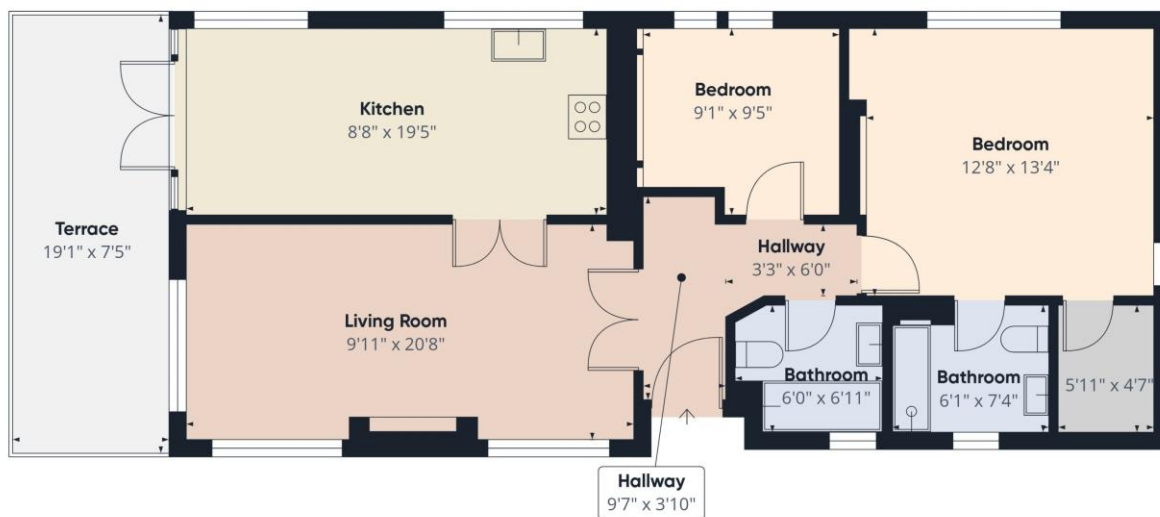
**Minimum age of 50 years+**  
**Pet friendly site ( subject to site rules )**

Please note that all buyers attend property viewings at their own risk and must assess any hazards themselves. We can refer you onto Mortgage Advice Bureau for help with finance. We may receive a fee if you take out a mortgage through them. If you require a solicitor to handle your purchase we can refer you onto Setfords Solicitors or Juno. We may receive a fee of £250.00 if you use their services.

Please be advised that a fee of £80 including VAT will be charged to complete the necessary anti-money laundering and identify verification checks for prospective clients wishing to purchase through ourselves. This fee is non-refundable and is required to ensure compliance with legal obligations and regulatory standards.

**BELVOIR**

Property is person



Approximate total area:  
825 ft<sup>2</sup>

Balconies and terraces  
143 ft<sup>2</sup>

(1) Excluding balconies and terr

Calculations reference the RICS II  
3C standard. Measurements are  
approximate and not to scale. T  
floor plan is intended for illustra  
only.

GIRAFFE360

**BELVOIR!**

Contact us today to arrange a viewing...

[www.belvoir.co.uk](http://www.belvoir.co.uk)

01189 820 333