



2  1  1 

Monkswood Crescent, Tadley

**BELVOIR!**

Offers in excess of £280,000



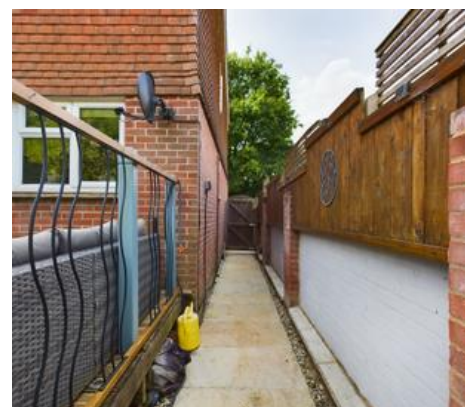
### Key Features

- > Tenure: Freehold
- > Two bedrooms
- > Private rear garden
- > Excellent condition throughout
  - > EPC rating: TBC
  - > Council tax band C
  - > Tenure: Freehold
  - > Allocated parking

Belvoir Tadley are delighted to present to the market this lovely two-bedroom home in Monkswood Crescent. This beautifully presented home, nestled in a quiet cul-de-sac, offers a serene and peaceful atmosphere.

Inside, you'll find a meticulously maintained interior boasting modern comforts and a welcoming ambiance. The property features a secure storage shed, perfect for storing bikes, gardening equipment, or seasonal items. Parking is also available on-site, ensuring convenience and ease.

Enjoy the tranquility of this idyllic location, while still being within easy reach of local amenities and transportation links. Don't miss this opportunity to make Monkswood Crescent your new home.



We can refer you onto Mortgage Advice Bureau for help with finance. We may receive a fee of £250.00 if you take out a mortgage through them. If you require a solicitor to handle your purchase we can refer you onto Setfords Solicitors or Juno Conveyancing. We may receive a fee of £250.00 if you use their services.

Please note that all buyers attend property viewings at their own risk and must assess any hazards themselves.

Please be advised that a fee of £80 including VAT will be charged to complete the necessary anti-money laundering and identify verification checks for prospective clients wishing to purchase through ourselves. This fee is non-refundable and is required to ensure compliance with legal obligations and regulatory standards.

# BELVOIR

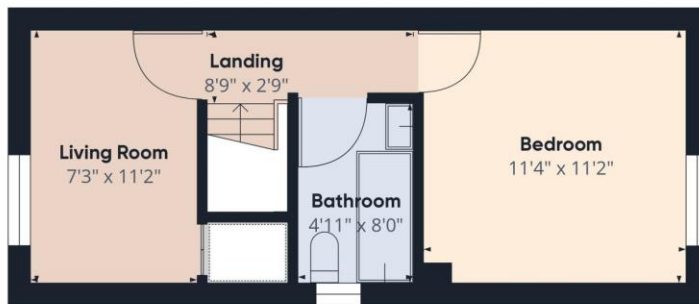
Property is personal



Floor 0 Building 1

Approximate total area<sup>(1)</sup>  
600.41 ft<sup>2</sup>

Balconies and terraces  
109.58 ft<sup>2</sup>



Floor 1 Building 1

(1) Excluding balconies and terraces

While every attempt has been made to ensure accuracy, all measurements are approximate, not to scale. This floor plan is for illustrative purposes only. Calculations are based on RICS IPMS 3C standard.

GIRAFFE360



Contact us today to arrange a viewing...

# BELVOIR!

[www.belvoir.co.uk](http://www.belvoir.co.uk)

01189 820 333