



2  1  1 

Lilac Walk, Thatcham

Guide price £130,000

BELVOIR!



Key Features

- > Double Park Home
- > Driveway parking
- > No onward chain
- > Externally clad
- > Two double bedrooms
- > Generous garden
- > Tenure: Leasehold
- > EPC rating Exempt

Belvoir are proud to offer to the market this impressive two bedroom park home located within Crookham Park. The accommodation is laid over one floor and comprises a large living room through to a dining room, kitchen, two double bedrooms and a family bathroom.

Externally the property benefits from a secure and private rear garden with green house and driveway parking to the side. To the front you have a well appointed garden which is fully enclosed.

The property has full gas central heating which runs from LPG, otherwise the property benefits from mains connections for electric, water and drainage.



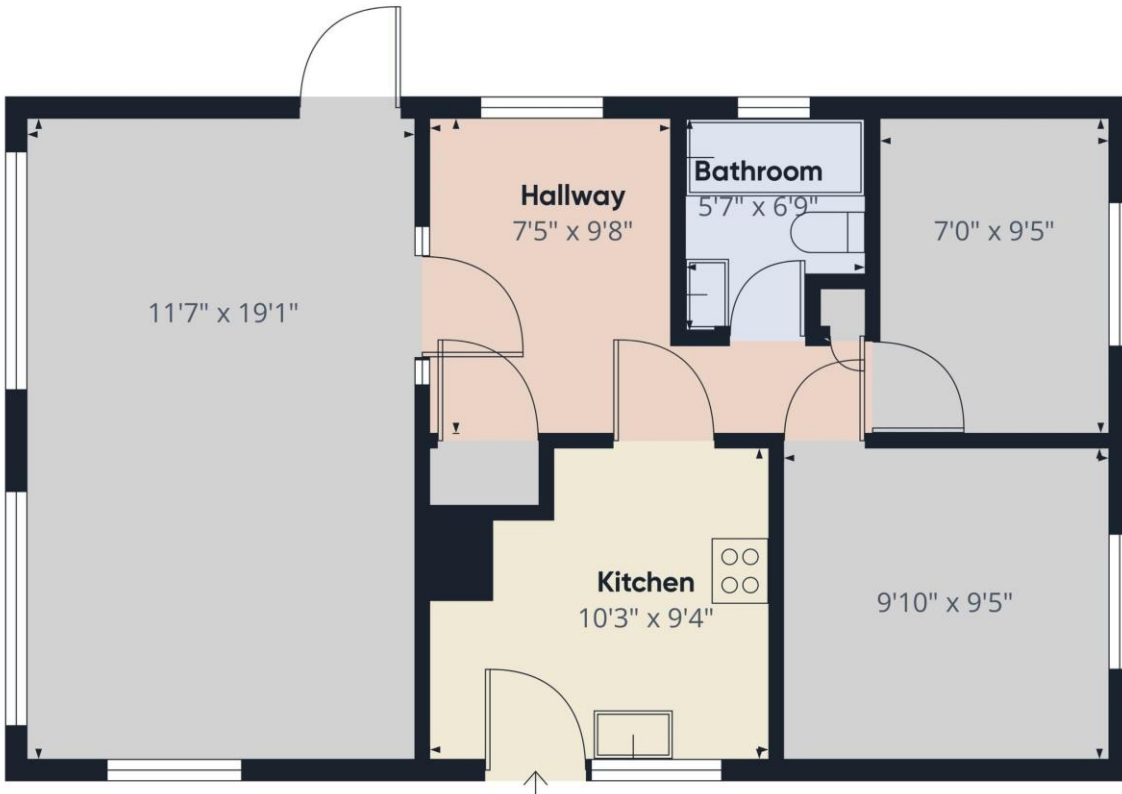
We can refer you onto Mortgage Advice Bureau for help with finance. We may receive a fee of £250.00 if you take out a mortgage through them. If you require a solicitor to handle your purchase we can refer you onto Setfords Solicitors or Phillips Solicitors. We may receive a fee of £250.00 if you use their services.

Please note that all buyers attend property viewings at their own risk and must assess any hazards themselves.

Please be advised that a fee of £80 including VAT will be charged to complete the necessary anti-money laundering and identify verification checks for prospective clients wishing to purchase through ourselves. This fee is non-refundable and is required to ensure compliance with legal obligations and regulatory standards.

BELVOIR!

Property is personal

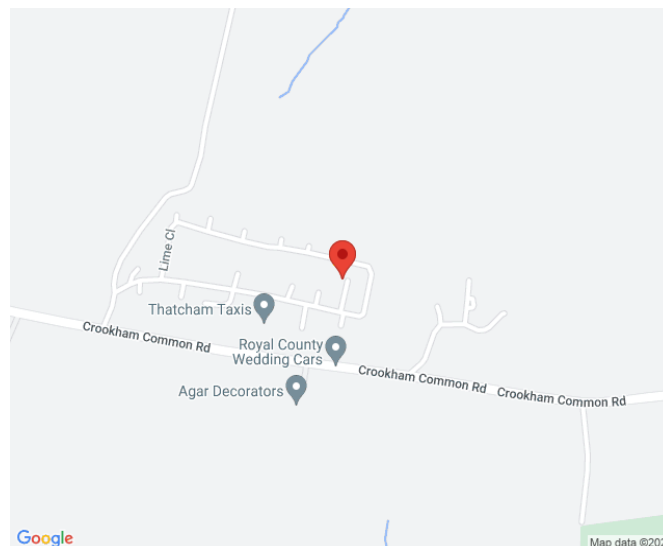


Approximate total area^m
600.52 ft²

(1) Excluding balconies and terraces

While every attempt has been made to ensure accuracy, all measurements are approximate, not to scale. This floor plan is for illustrative purposes only.

GIRAFFE360



Contact us today to arrange a viewing...

BELVOIR!

www.belvoir.co.uk

01189 820 333