



Trinity

Trinity Street, Peterborough, PE1 1DA

City Centre office with onsite parking and refurbished entrance to let.

249 to 6,000 sq ft
(23.13 to 557.42 sq m)

- Fantastic light, bright new entrance with communal seating & kitchen
- Refurbished office floors
- 4 mins pedestrian access to train station
- Parking & EV charge points
- Cycle storage & shower facilities
- Air-conditioning & LED Lighting
- 24 hour access
- Flexible terms

Trinity, Trinity Street, Peterborough, PE1 1DA

Summary

Available Size	249 to 6,000 sq ft
Business Rates	Upon Enquiry
EPC Rating	C

Accommodation

Various office accommodation available:

Floor/Unit	Description	Size
Ground	North	1,034 sq ft
Ground	South - flexible units	3,000 sq ft
1st	RM1.12	249 sq ft
1st	RM1.15	249 sq ft
1st	RM1.17	249 sq ft
1st	RM1.18	249 sq ft
1st	RM1.20	510 sq ft
1st	South	3,000 sq ft

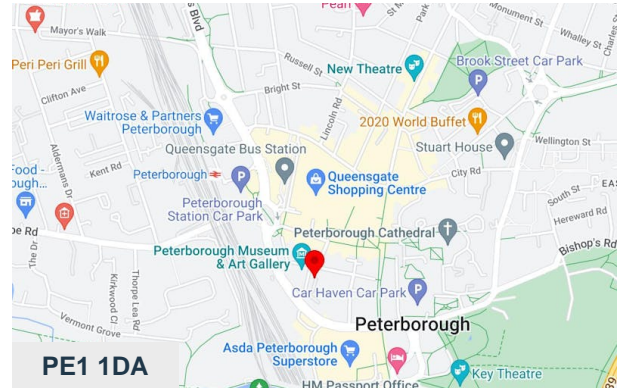
Description

Trinity has undergone a comprehensive refurbishment with a single-storey extension which has delivered a fantastic new entrance, entrance lobby and kitchen.

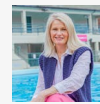
Trinity provides four floors of office accommodation accessed from a central core and onsite parking. The first floor offers fully furnished office suites offering flexibility from 1 desk short-term contracts up to 3,000 sq ft. All occupiers have access to shower, kitchen & WC facilities and communal break-out seating.

Location

Trinity is located along Trinity Street within the Priestgate area of Peterborough City. The offices sit in the heart of the city, neighbouring the Peterborough Museum and the amenities of Cathedral Square and Queensgate Shopping Centre. The train & bus stations are accessed on direct pedestrian routes within a 4-minute walk.



Viewing & Further Information



Sophie Dickens

07763 206550

sophiedickens@tydusre.com