



20c Middle Street, Worcester

Worcester

£115,000

20c Middle Street

Worcester, Worcester

Council Tax band: A

Tenure: Leasehold

EPC Energy Efficiency Rating: E

EPC Environmental Impact Rating: E

- One Bedroom Apartment
- Walking Distance To The City Centre
- Parking
- Modern Decor

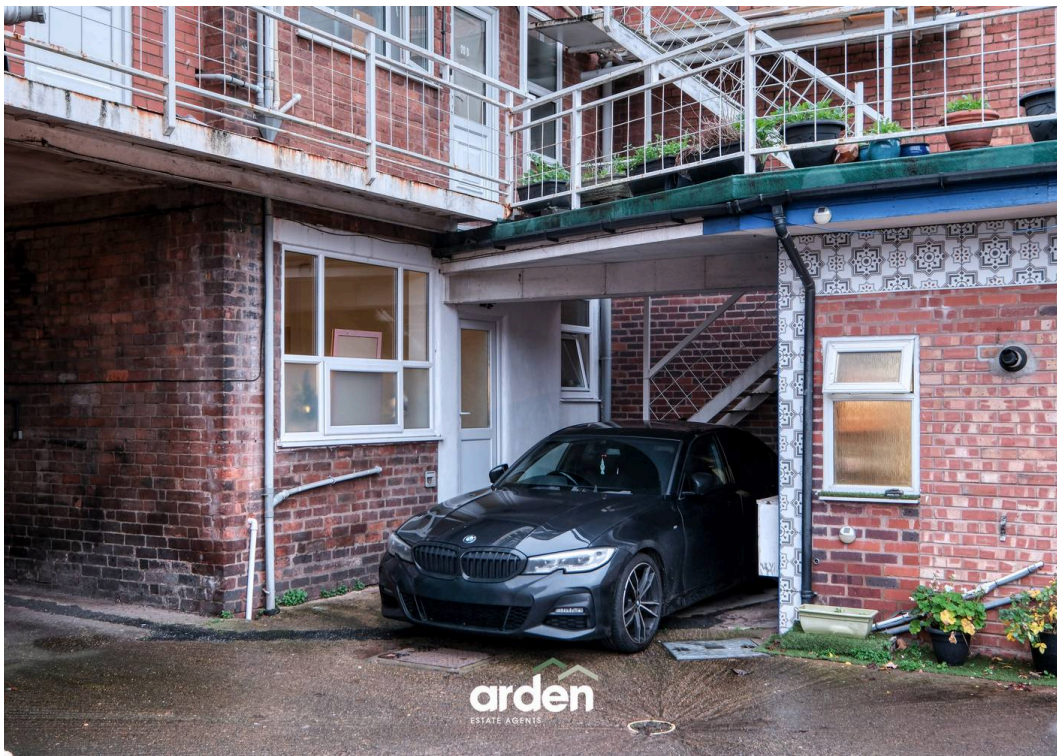
Welcome to this one-bedroom apartment, ideally located within walking distance of the city centre. This property is perfect for first-time buyers, investors, or those seeking a low-maintenance city lifestyle.

Upon entering the apartment, you are welcomed into a bright, open-plan kitchen and living area, ideal for relaxing. The modern kitchen features sleek white cabinets and integrated appliances, including a fridge/freezer, washing machine and oven.

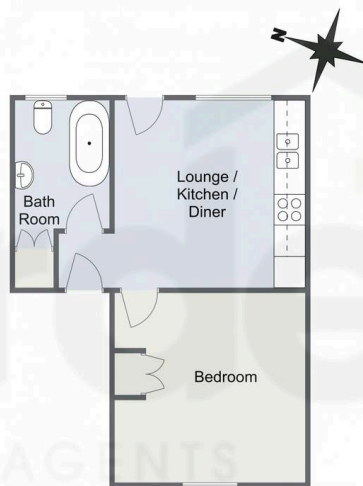
The spacious bedroom boasts high ceilings and comfortably accommodates a double bed and bedside tables, with additional floor space to spare. Built-in wardrobes provide excellent storage.

Completing the home is a well-appointed bathroom, fitted with a shower over bath, WC and wash basin.





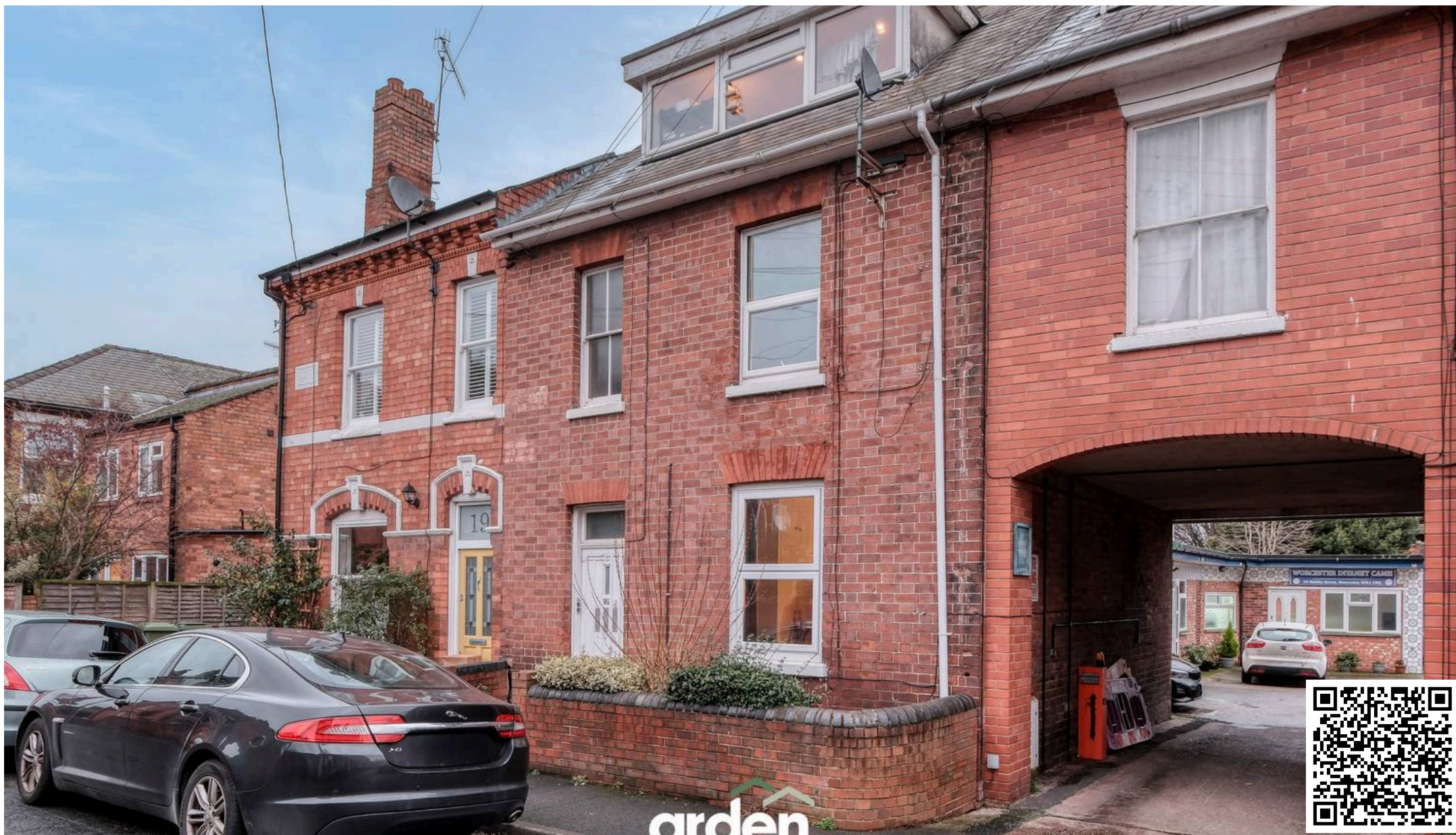
Middle Street, Worcester



Total Area Approx
33.8 Sq M
363.8 Sq Ft

For illustrative purposes only. Decorative finishes, fixtures & fittings do not represent the current state of the property. Measurements are approximate & not to scale. Floor Plans made using RoomSketcher.





Arden Estates

Arden Estate Agents, 15 Foregate Street – WR1 1DB

01905 958 290 • worcester@ardenestates.co.uk •