



Virginia, Eltric Road
Offers Over £675,000

4 3 2



Set on the desirable Eltric Road in North Worcester, this beautifully renovated and reconfigured four-bedroom detached dormer bungalow offers spacious and versatile living, perfect for modern family life. Compromising of four bedrooms, two reception rooms, open plan kitchen family room, three bathrooms and a gorgeous garden.

Upon entering the property, a welcoming hallway leads to the lounge, fourth bedroom, dining room, study, ground floor shower room, and the expansive kitchen/family room, and the stairs rising to the first floor.

The lounge boasts a log burner, ideal for cosy evenings, and is bathed in natural light through double doors. Bedroom four, located at the front of the property, is a generously sized double. The dining room sits to the rear, featuring an attractive bay window, and could easily serve as an additional bedroom if required.

At the heart of the home lies the impressive open-plan kitchen/family room, complete with a log burner and bi-fold doors opening onto the landscaped rear garden. The kitchen is well-appointed with a range of wall and base units, two Bosch ovens, Bosch dishwasher, AEG hob with extractor, deep soft-close drawers, and space for a double fridge freezer. A large central island offers ample workspace, perfect for entertaining, while quartz-effect worktops, gloss cabinetry, and an exposed brick feature wall enhance the stylish aesthetic.

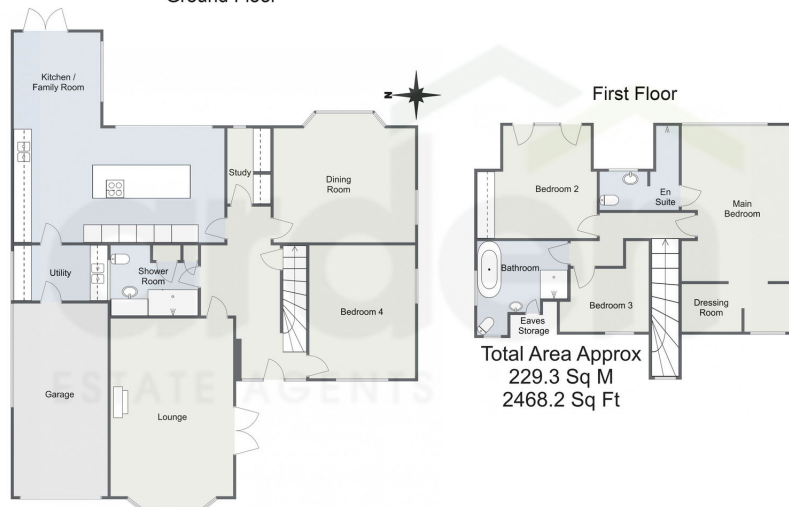
The living area within this open-plan space includes a glazed lantern-style roof, ceiling speakers, and a second log burner for added comfort. Just off the kitchen is a utility room with a sink, plumbing for a washing machine, additional storage units, and internal access to the garage.

A separate study is positioned between the kitchen and dining room, complete with built-in storage and an obscured glazed window for privacy. The ground floor also includes a shower room with a walk-in shower, WC, sink, dual towel rails, and a cupboard housing the boiler.

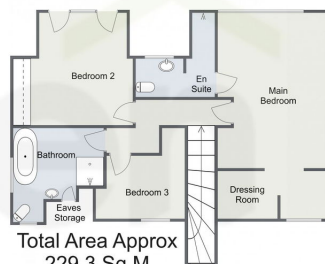
Upstairs, you'll find three bedrooms and two bathrooms. The main



Eltric Road, Worcester
Ground Floor



First Floor



Total Area Approx
229.3 Sq M
2468.2 Sq Ft

For illustrative purposes only. Decorative finishes, fixtures & fittings do not represent the current state of the property. Measurements are approximate & not to scale. Floor Plans made using RoomSketcher.

- Beautifully Renovated
- Two Reception Rooms
- High Specification
- Four Bedrooms
- Three Bathrooms
- Garage & Ample Parking



For more information on this house or to arrange a viewing please call the office on:

01905 958 290

Alternatively, you can scan the QR to view all of the details of this property online.



arden
ESTATE AGENTS