



Rowley Hill Street, Worcester, WR2 5LJ

£299,950

3 2 2



OFFERED WITH NO ONWARD CHAIN - A well proportioned Victorian end-of-terrace home in the sought-after St Johns area, offering three double bedrooms, two reception rooms, and a convenient downstairs WC. Boasting a charming garden, this property is ideal for first-time buyers or those looking to downsize. Get in touch today to arrange a viewing!

Upon entering the property, the hallway provides access to the lounge and dining room. The lounge, situated at the front, features a bay window and a feature fireplace as its focal point. The dining room offers a great entertainment space and showcases charming, original exposed floorboards. From the dining room, you enter the kitchen, which is finished in neutral tones with tiled flooring. It includes wall and base units, along with built-in appliances such as an electric oven, induction hob, extractor fan, sink, and dishwasher and there is also plumbing for a washing machine. The French doors open to the garden, offering a lovely view while seated at the breakfast table. A convenient downstairs w/c completes the ground floor.

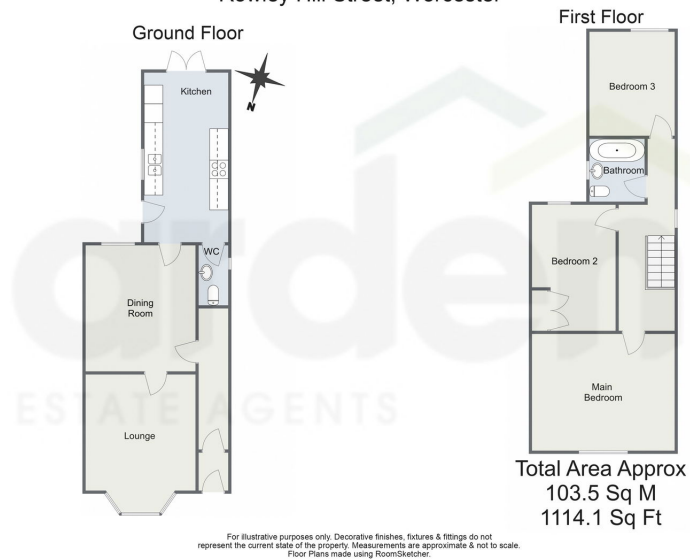
Upstairs, you'll find three double bedrooms - perfect for family living or hosting guests. The main bedroom is situated at the front of the property, whilst bedroom two offers built in wardrobes. Bedroom three and the family bathroom are located towards the rear of upstairs. The family bathroom features a P shaped bath with overhead shower, sink and w/c.

Outside, the garden is a charming space for enjoying warmer days. A raised decking area sits beneath a pergola, whilst a patio area is great for outdoor dining. The rest of the garden is laid to lawn with side access.

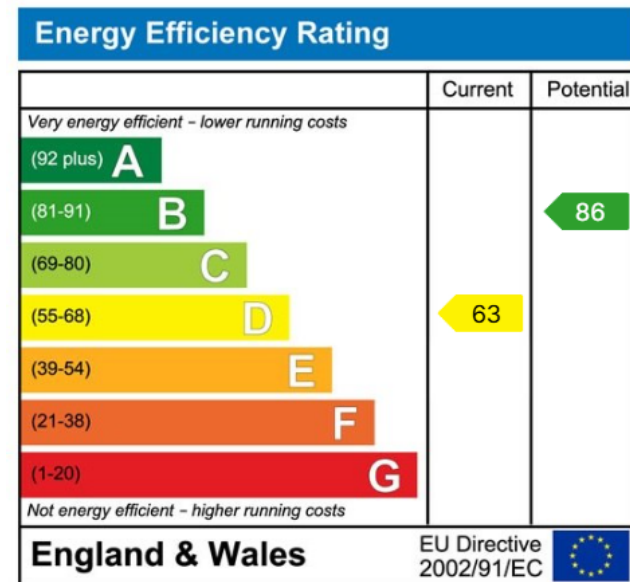
Location: Rowley Hill Street in Worcester is located in the St John's area, known for its residential character and proximity to local amenities. The neighbourhood offers easy access to several schools, such as Pitmaston Primary and Christopher Whitehead Language College, which are within walking distance. For daily needs, St John's local shops, supermarkets, and eateries are nearby, while the city centre of Worcester is about a mile away, offering more extensive shopping, dining, and entertainment options.



Rowley Hill Street, Worcester



- Period Property
- Downstairs WC
- Landscaped Rear Garden
- Two Reception Rooms
- Three Double Bedrooms
- St Johns Location



For more information on this house or to arrange a viewing please call the office on:

01905 958 290

Alternatively, you can scan the QR to view all of the details of this property online.

