



Barbourne Terrace, Worcester, WR1 3JS

Offers Over £715,000

4 2 3



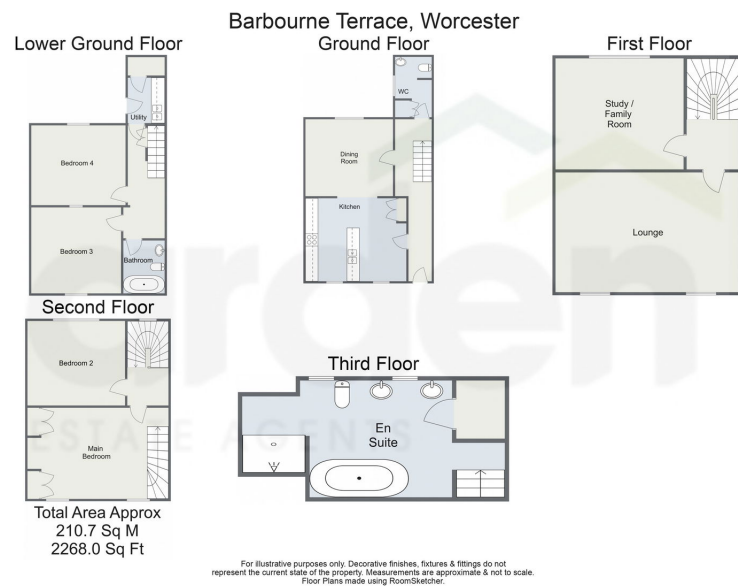
Nestled in the highly desirable Barbourne area, these terrace properties are rarely available. This noteworthy five storey Georgian townhouse has undergone renovation from the ground floor up, featuring new electrical and plumbing systems, commercial-grade oak flooring, limestone tiling, traditional cast iron radiators, and bespoke hardwood shutters throughout. If you're looking to live on one of Worcester's most sought-after streets in a period property, then we highly recommend a viewing.

Approaching the property, a wooden pedestrian gate opens to steps leading up to the front garden. A lawn, raised beds, and a patio area create a perfect setting for outdoor dining. The Georgian awning above the front door and iron Juliette balconies are the first hints of the period features that continue throughout the home. Stepping inside, the hallway provides access to the kitchen, dining room, W/C, and lower ground floor. The kitchen has been upgraded with shaker-style cabinets, complemented by granite worktops. A double range oven is set within the chimney breast, a built-in dishwasher, and a fridge freezer. Flowing into the dining room, the space is enhanced by a charming log burner with a lined chimney, adding to its inviting atmosphere.

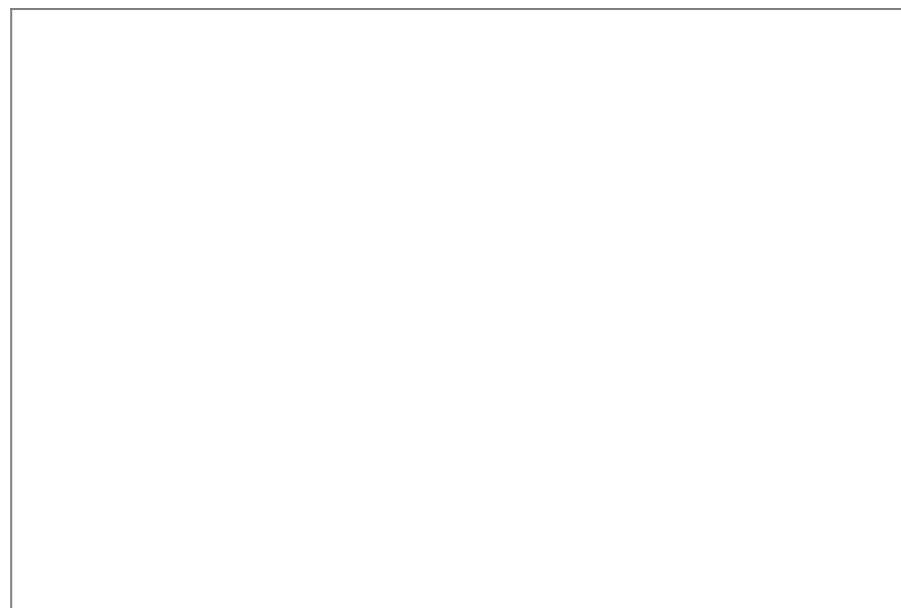
The lower ground floor offers versatile accommodation with two double bedrooms, a family bathroom and utility room. The bathroom has been renovated to a modern standard, featuring a sink, w/c and bath with overhead shower. The utility space features space for a washing machine and tumbler dryer. There is also a sink and storage cupboard for added convenience. Ascending to the first floor, the lounge sits at the front of the property, featuring floor-to-ceiling sash windows. The marble fireplace and period cornicing contrast beautifully with modern downlights, blending historic charm with contemporary updates. The study/family room offers a versatile space, perfect for a home office or playroom to suit your needs.

On the second floor, you'll find two additional bedrooms, including the main bedroom. With built-in wardrobes for storage and exposed beams adding character, the main bedroom is both practical and charming. Stairs lead up to the en-suite, which has been beautifully renovated to a high specification. The exposed beams contrast elegantly with the modern finish, while dual sinks, a separate bath, and





- Grade II Listed
- Off Road Parking
- Popular Barbourne Area
- Front & Rear Gardens
- Walking Distance to Town
- Georgian Townhouse



For more information on this house or to arrange a viewing please call the office on:

01905 958 290

Alternatively, you can scan the QR to view all of the details of this property online.



arden
ESTATE AGENTS