



Tetbury Drive, Worcester, WR4 9LG

£250,000

3 1 2



As you enter Tetbury Drive your greeted with a spacious hallway, leading into the refurbished kitchen boasting ample storage and work top space with views of the garden creating a bright and airy space. The kitchen benefits from plumbing for a washing machine, an integral oven, hob and fridge freezer. Just off the hallway, the dining room provides ample space for four chairs, allowing families to savour delicious meals together, or it can serve as an additional area for a home office.

The spacious lounge is the perfect area for relaxation with access to the conservatory enjoyed all-year round. The open design fosters a welcoming environment, making it an excellent area for hosting guest or spending time with family. The luminous conservatory located at the back of the house enhancing the living space, offering extra room for dining, relaxation or even serving as a home office.

Upstairs, the property benefits from three bedrooms and a family bathroom with a separate toilet. The master bedroom provides ample space for a double bed, features generous floor area, and includes built-in storage. Bedroom 2 offers ample floor space, making it suitable for a double bed, ideal for accommodating guests or serving as an additional bedroom. Both bedrooms 2 and 3 are equipped with a built-in storage cupboard for enhanced convenience.

The family bathroom is equipped with a white suite, featuring a shower above the bath, while patterned tiles contribute to a refreshing ambiance in the area. Additionally, a cupboard offers practical storage solutions. The standalone toilet, is convenient for busy family lifestyles.

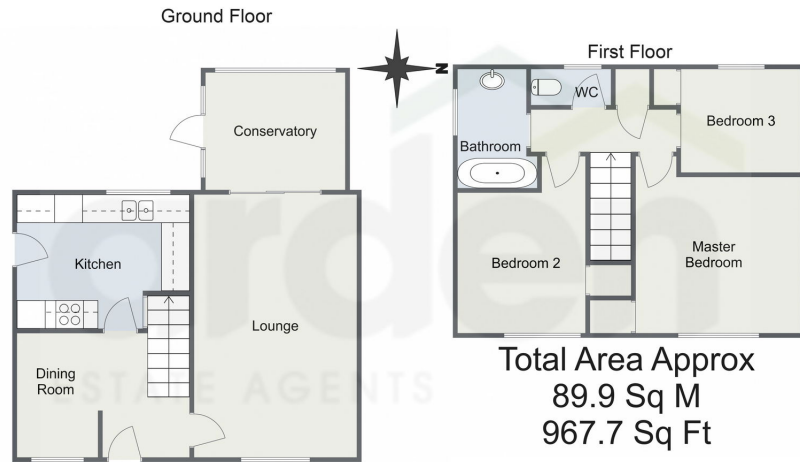
The exterior of the property features generous parking facilities. Transitioning to the rear garden, the lawned area serves as an ideal setting for children to engage in play or for entertaining guests. The patio section provides an excellent space for seating and relishing al fresco dining experiences.

**Lounge** - 5.61m x 3.48m (18'4" x 11'5")

**Conservatory** - 2.94m x 2.49m (9'7" x 8'2")

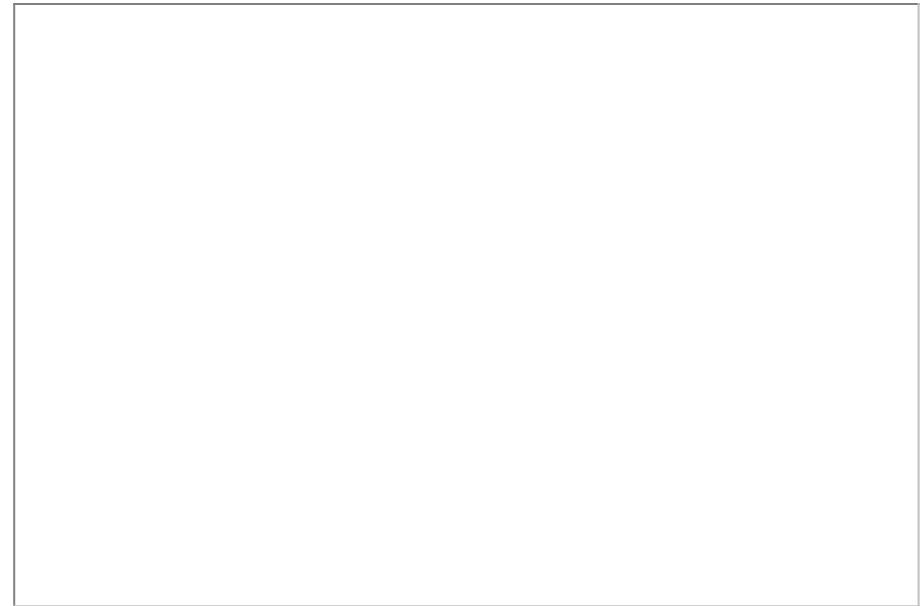


Tetbury Drive, Worcester



For illustrative purposes only. Decorative finishes, fixtures & fittings do not represent the current state of the property. Measurements are approximate & not to scale. Floor Plans made using RoomSketcher.

- Family Home
- Conservatory
- Semi-Detached
- Off Street Parking
- Private Garden
- Bright and Airy



For more information on this house or to arrange a viewing please call the office on:

**01905 958 290**

Alternatively, you can scan the QR to view all of the details of this property online.



**arden**  
ESTATE AGENTS