



The logo for Arden Estate Agents features a stylized green house icon above the word 'arden' in a bold, white, lowercase sans-serif font. Below 'arden', the words 'ESTATE AGENTS' are written in a smaller, white, uppercase sans-serif font.

arden  
ESTATE AGENTS

It's who  
you move  
with.



# Malvern Road, Powick, Worcester, WR2 4RT

Offers Over £675,000

🛏️ 5 🚿 3 🛋️ 2





Welcome to this incredibly spacious five-bedroom, four-bathroom family home, built in 2005 and offering a generous 3,800 square feet of living space across three levels. Perfectly designed for modern living, this impressive property features an open-plan kitchen, dining, and living area that seamlessly overlooks the beautifully landscaped garden – a true hub for family life and entertaining.

On the ground floor, you'll be greeted by a grand entrance hall leading to a bright and expansive kitchen/diner/lounge with direct garden views. The stylish kitchen is accompanied by a utility room, while a private formal lounge offers a cozy retreat for intimate gatherings. A dedicated study provides the perfect space for home working, and a contemporary shower room adds convenience to this level.

Upstairs, the first floor offers five spacious bedrooms, three of which boast en-suite bathrooms, ensuring ultimate comfort and privacy for family members and guests alike. The additional family bathroom completes the level with thoughtful touches and elegant design.

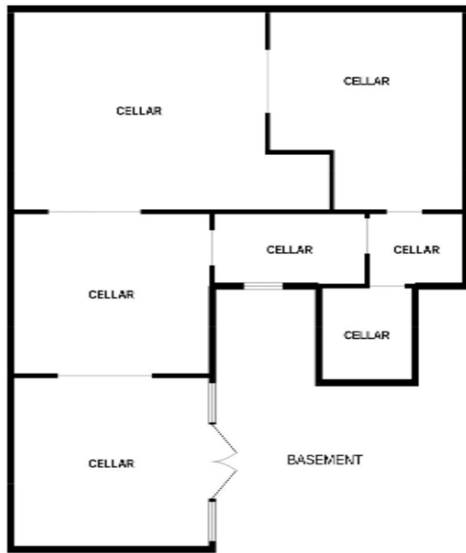
The real gem of this property lies in its vast lower ground floor, which mirrors the layout of the upper levels and offers unlimited potential for further development. Whether you're envisioning a home cinema, gym, or additional living areas, this space can easily be transformed to suit your needs, complete with garage access.

The private rear garden is mostly laid to lawn with a spacious paved area – ideal for summer entertaining or relaxing with family. The gated driveway provides secure, off-road parking for several vehicles, adding to the property's exclusivity.

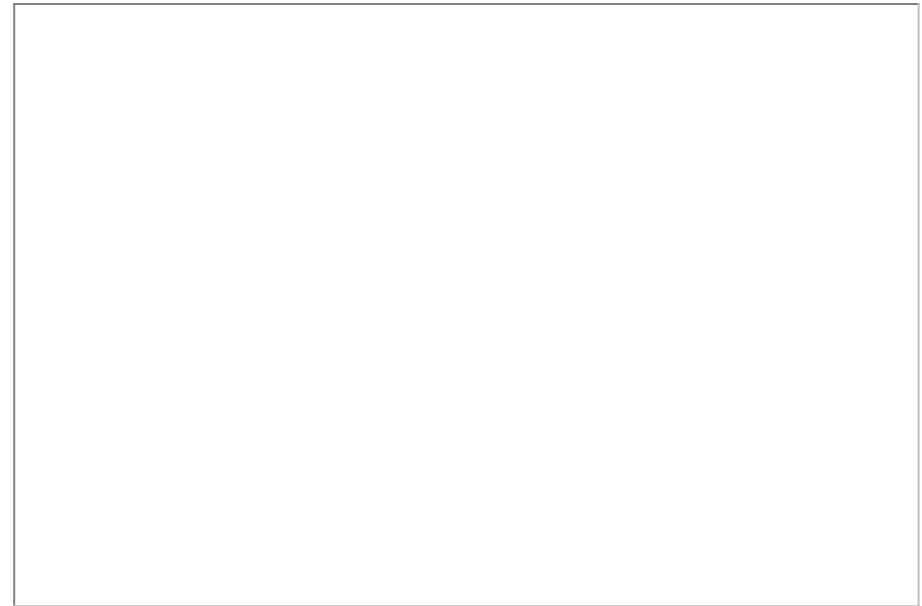
This home is equipped with modern conveniences, including mains gas, electricity, water, drainage, and underfloor heating throughout, ensuring comfort and efficiency. Don't miss the opportunity to make this exceptional property your forever home!

Location: Nestled in the highly desirable village of Powick, conveniently positioned between Worcester City Centre and Malvern, this location offers an array of local amenities including shops, restaurants, and pubs. Powick provides an ideal village setting with a





- One Of A Kind Property
- Modern Living
- Powick Location
- Family Home
- 3,800 Sq Ft
- Two Fantastic Sized Cellars



For more information on this house or to arrange a viewing please call the office on:

**01905 958 290**

Alternatively, you can scan the QR to view all of the details of this property online.

