



Flag Meadow Walk, Worcester, WR1 1QQ

£265,000

3 1 2



A traditional Victorian end of terrace property situated in the heart of Barbourne, benefiting from a generous garden and a modern finish throughout. With its characterful features and practical layout, this home is a fantastic opportunity for those seeking a balance of tradition and modern living. Arrange a viewing today and start envisioning your life in this lovely property.

Nestled in the heart of Worcester, this delightful three-bedroom property on Flag Meadow Walk offers both character and modern convenience. Ideal for growing families or those looking for a peaceful retreat, this home promises comfort and charm in equal measure.

Upon entering, you are greeted the hallway providing access to the warm and inviting lounge. The lounge features a bay window, allowing ample natural light to flood the room and the cozy fireplace with a log burner adds a touch of rustic charm, making this the perfect space to relax and unwind.

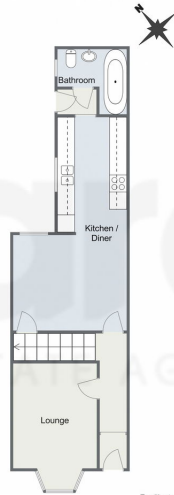
The dining room also features a fireplace and flows into the kitchen. The kitchen provides a functional space, fitted with modern appliances and a range of wall and base cabinets. The appliances include an induction hob, electric oven and extractor fan. There is also space for a fridge freezer and washing machine. The rear hallway provides access to the rear garden and the sleek and modern bathroom, featuring a a bath with overhead shower, toilet and sink.

The first floor features three well-proportioned bedrooms. The master bedroom is well sized and filled with natural light, creating a serene space for rest. Two additional bedrooms, situated at the rear of the property, provide space for family or guests. A convenient 'Jack and Jill' style toilet has been added to the first floor and is situated between the master and second bedrooms.

Outside the garden offers a great space for enjoying warmer days. There is a patio area perfect for al-fresco dining and two distinct lawn areas, separated by mature borders. The bottom of the garden also houses a lovely summer house. The garden can be accessed by the shared access to the side of the property.



Flag Meadow Walk, Worcester
Ground Floor



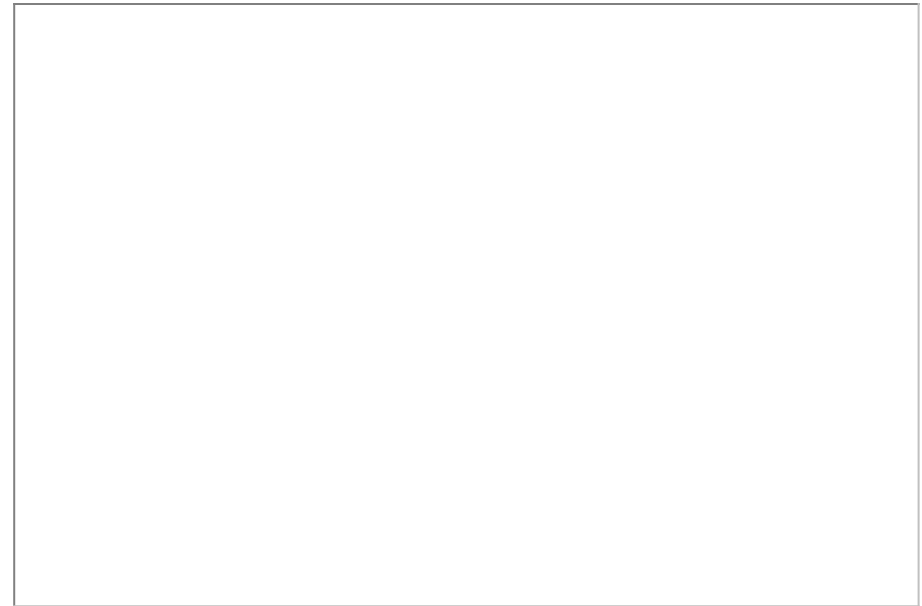
First Floor



Total Area Approx
90.7 Sq M
976.3 Sq Ft

For illustrative purposes only. Decorative finishes, fixtures & fittings do not represent the current state of the property. Measurements are approximate & not to scale. Floor Plans made using RoomSketcher.

- Log Burner
- Modern Finish
- Two Reception Rooms
- Popular Barbourne Location
- Jack & Jill Toilet
- Great Garden



For more information on this house or to arrange a viewing please call the office on:

01905 958 290

Alternatively, you can scan the QR to view all of the details of this property online.

