




ESTATE AGENTS

It's who
you move
with.

Chestnut Street, Worcester, WR1 1PA

£290,000

3 2 2



A charming double-front Edwardian house featuring three bedrooms, a gorgeous private rear garden, and off-street parking, located in the heart of Worcester.

Upon entering the property, the hallway provides access to the family room, the lounge/diner, and the stairs rising to the first floor. The family room is a bright space with gorgeous cornicing features, making it an ideal snug or home office if required. This room leads to the rear hallway, which provides access to the bathroom and kitchen and links back to the lounge/diner. The bathroom is well-appointed with a corner bath, sink, and WC, offering a comfortable and convenient space.

The kitchen, with views of the rear garden, features a range of wall and base units in neutral tones and built-in appliances, including a sink and drainer, electric oven, four-ring gas hob, extractor fan, and microwave. The kitchen also provides convenient access to the utility room and the rear garden. The lounge/diner, an expansive area perfect for entertaining, features sliding doors opening to the garden, flooding the room with light and offering a tranquil outlook.

The first floor comprises a master bedroom with built-in storage that provides a tranquil retreat, alongside two additional bedrooms, making it ideal for families or guests. A separate WC on this floor adds to the convenience.

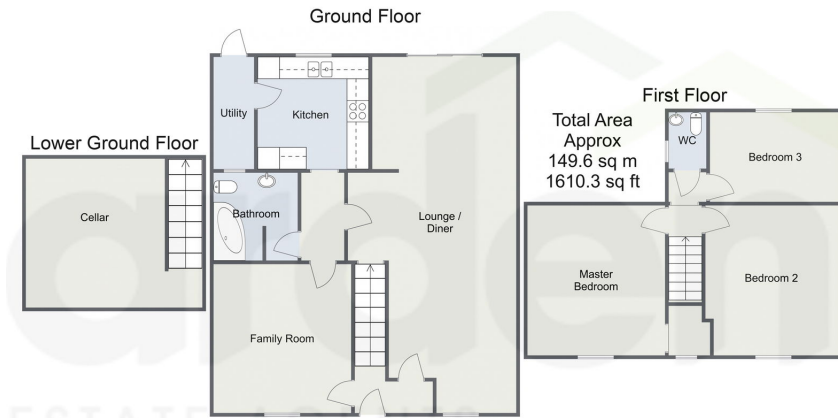
The lower ground floor boasts a generous cellar, perfect for additional storage or potential conversion.

Outside, the garden is mainly laid to lawn with a patio area perfect for al-fresco dining. The garden is a private retreat, perfect for enjoying sunny days.

Location: This location is just a short walk from the vibrant city centre, offering easy access to a variety of cosmopolitan bars, restaurants, cafes, and shops. It is also within walking distance of 24-hour gyms and Foregate Street station, which provides a direct line to London Paddington. Worcester is rich in culture, featuring art galleries, theatres, live music, Saturday street markets, and an annual Christmas Fayre. The city is steeped in history, with museums and



Chestnut Street, Worcester



For illustrative purposes only. Decorative finishes, fixtures & fittings do not represent the current state of the property. Measurements are approximate & not to scale. Floor Plans made using RoomSketcher.

- Period Property
- Private Rear Garden
- Cellar
- City Centre Location
- Two Reception Rooms
- Utility



For more information on this house or to arrange a viewing please call the office on:
01905 958 290

Alternatively, you can scan the QR to view all of the details of this property online.

