



Church Lane, Cotheridge, Worcester, WR6 5LW

£350,000

4 1 1



This exceptional four-bedroom terraced house is situated on a serene, no-through road in the quaint village of Cotheridge and catchment for The Chantry School. Boasting a generous plot, the property offers stunning, far-reaching views over the adjacent countryside, providing a picturesque and tranquil setting.

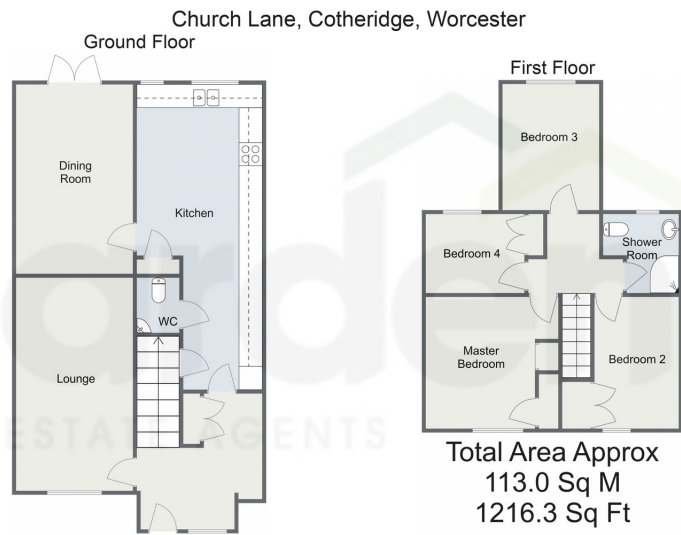
Upon entering the property, you are welcomed by a spacious porch with a convenient built-in storage cupboard. The hallway grants access to the bright and airy living room, complemented by a beautiful log burner that enhances the cozy atmosphere. The kitchen, spanning the length of the property, features an abundance of shaker style wall and base units, offering ample storage space. Additionally, the large rangemaster oven with an extractor fan, built-in fridge freezer, and a sink situated overlooking the delightful rear garden make it a functional and inviting space for keen cooks. A convenient w/c is located off the kitchen, while the adjacent dining room opens onto the beautifully landscaped garden, providing an ideal space for outdoor entertaining and relaxation.

Upstairs, the property comprises four bedrooms, offering stunning views of the surrounding countryside. Three of the bedrooms feature built-in storage, adding practicality to the living space. The neutrally decorated family shower room includes a sink, w/c, and a shower, catering to the needs of the household.

Externally, the property boasts a great garden, offering space for outdoor activities and gardening endeavours. The captivating views of the countryside contribute to a sense of peace and tranquillity, making it an ideal retreat from the hustle and bustle of everyday life. This rare find of a four-bedroom terraced house perfectly combines comfortable living, gorgeous views, and an enviable location. Don't miss this opportunity to transform this exceptional property into your new home.

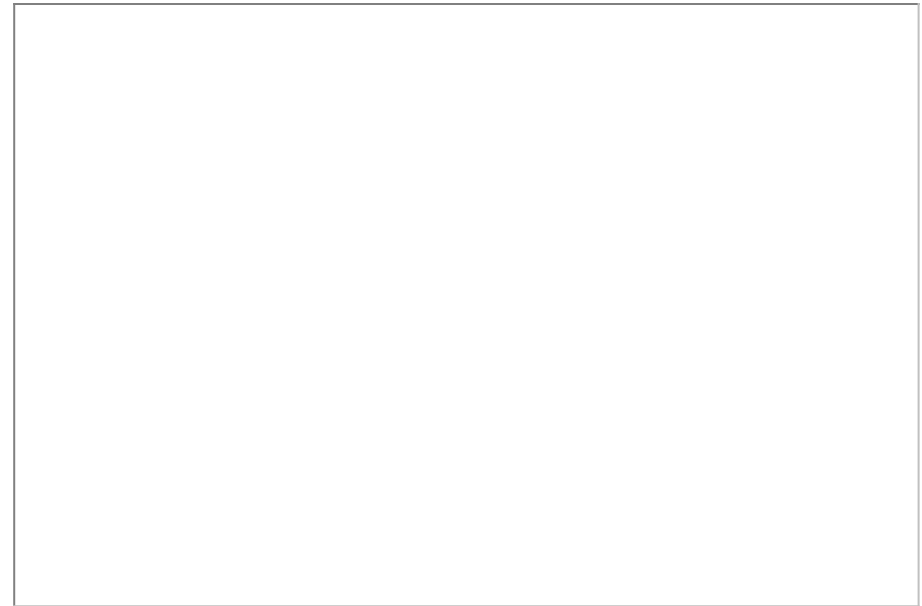
**Location:** Church Lane is nestled in the picturesque village of Cotheridge, enveloped by stunning countryside. Renowned for its historic 12th-century church, Cotheridge is ideally situated for effortless access to the vibrant city of Worcester and the charming cultural spa town of Malvern. The village is part of the highly sought-after catchment area for The Chantry School, as well as Broadwas C





For illustrative purposes only. Decorative finishes, fixtures & fittings do not represent the current state of the property. Measurements are approximate & not to scale. Floor Plans made using RoomSketcher.

- Gorgeous Countryside Views • Village Location
- Two Reception Rooms • Generous Kitchen
- Chantry School Catchment • Log Burner



For more information on this house or to arrange a viewing please call the office on:  
**01905 958 290**

Alternatively, you can scan the QR to view all of the details of this property online.

