



It's who
you move
with.

Battenhall Road, Worcester, WR5 2BL

£160,000

🛏️ 2 🚿 1 🚻 1



Summary: This charming ground floor flat in Battenhall presents a unique opportunity for first-time buyers and investors alike, offered to the market with no onward chain. Its desirable location, modern amenities, and charming features make it a highly attractive choice. This property promises not just a place to live, but a lifestyle of comfort and convenience. For those looking to secure a home in one of Worcester's most coveted areas, this flat represents an ideal opportunity.

Description: The flat features two double bedrooms, providing ample room for relaxation and storage. The newly fitted kitchen is a highlight, boasting modern appliances and stylish finishes. The lounge and dining room overlook the easterly and westerly communal gardens, offer a cozy yet spacious area ideal for entertaining guests or enjoying a quiet evening at home. The flat also includes a bathroom and a welcoming entrance hall that provides easy access to all areas of the home.

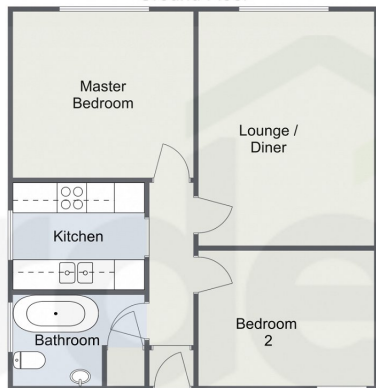
One of the standout features of this property is the en-bloc garage. Secure and convenient, it provides private parking and additional storage. Ample parking space is available for residents and guests, ensuring a hassle-free experience. The beautifully maintained communal gardens at the rear of the property offer a tranquil retreat and easy access to the garage and parking area. Additional benefits include double glazing and gas central heating, ensuring warmth and comfort throughout the year.

The location of this property further enhances its appeal. Nestled in the prestigious Battenhall neighbourhood, residents can enjoy the serenity of a peaceful residential area while being just a stone's throw away from the vibrant Worcester city centre. This prime location offers the best of both worlds: the tranquillity of suburban living with the vibrancy and convenience of city life. Shopping, dining, cultural attractions, and excellent transport links are all within easy reach.

Location: Nestled in the coveted Battenhall area, this property offers a prime location mere moments from the vibrant heart of Worcester City Centre. Immerse yourself in the rich tapestry of history and culture as you explore the city's iconic landmarks, from its storied



Battenhall Road, Worcester
Ground Floor



Total Area
Approx
54.2 sq m
583.4 sq ft



For illustrative purposes only. Decorative finishes, fixtures & fittings do not represent the current state of the property. Measurements are approximate & not to scale. Floor Plans made using RoomSketcher.

- No Onward Chain
- En-Bloc Garage
- Desirable Battenhall Area
- Upgraded Kitchen
- Allocated Parking
- Communal Garden



Energy Efficiency Rating

	Current	Potential
<i>Very energy efficient - lower running costs</i>		
(92 plus) A		
(81-91) B		
(69-80) C		72
(55-68) D	64	
(39-54) E		
(21-38) F		
(1-20) G		
<i>Not energy efficient - higher running costs</i>		
England & Wales	EU Directive 2002/91/EC	

For more information on this house or to arrange a viewing please call the office on:

01905 958 290

Alternatively, you can scan the QR to view all of the details of this property online.

