



The logo for Arden Estate Agents features a stylized green house icon above the word "arden" in a bold, white, sans-serif font. Below "arden" is the text "ESTATE AGENTS" in a smaller, white, sans-serif font.

arden
ESTATE AGENTS

It's who
you move
with.

Broadgreen, Broadwas, Worcester, WR6 5NW

Guide Price £425,000

🛏️ 4 🚿 2 🚗 1



Summary: An exceptional opportunity to purchase a charming four-bedroom detached home in the picturesque village of Broadgreen. This property offers ample scope for extension (subject to planning permission) and is available with no onward chain. Lovingly owned by the same family for decades, it is now ready to welcome a new family, who wishes to create their dream home. Located in a highly sought-after village where properties rarely become available, this is an opportunity not to be missed!

Description: As you approach the property, prepare to be captivated by the sprawling plot. Framed by a picturesque brick wall, the garden embodies the essence of quintessential village living. The expansive driveway beckons, providing ample space for multiple vehicles, including a double driveway nestled at the end, conveniently accessible from both the front and the garden.

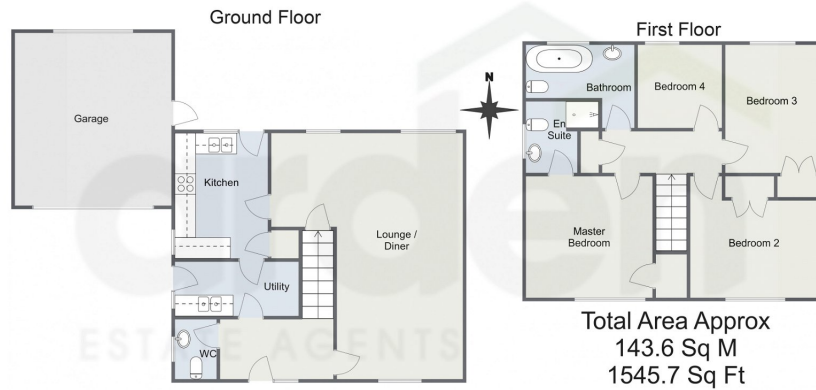
Step into the inviting foyer, where a welcoming hallway unfolds, granting access to essential spaces like the W/C and utility room, before leading into the expansive lounge diner. Stretching graciously across the width of the property and gracefully curving around the rear, this central area exudes spaciousness and comfort. Its dual aspect design ensures an abundance of natural light, seamlessly connecting to the kitchen for added convenience. The utility room offers both side access and entry to the kitchen, presenting a versatile space that holds potential for expansion into a larger kitchen area, subject to planning permission. Within the kitchen itself, a variety of base and wall units provide ample storage, complemented by a built-in dining area and a rear door that effortlessly leads into the garden oasis.

Ascending to the first floor reveals a haven of comfort with four bedrooms and two bathrooms accessible from the landing. Three of the bedrooms feature built-in storage solutions, enhancing functionality and organization. The master bedroom and the second bedroom enjoy the charm of a front aspect, while the third and fourth bedrooms offer picturesque views of the serene rear garden. The family bathroom indulges with a bath, W/C, and sink, while the master en-suite presents a shower, sink, and W/C combination.

Outside, the property truly shines with its wrap-around plot, offering

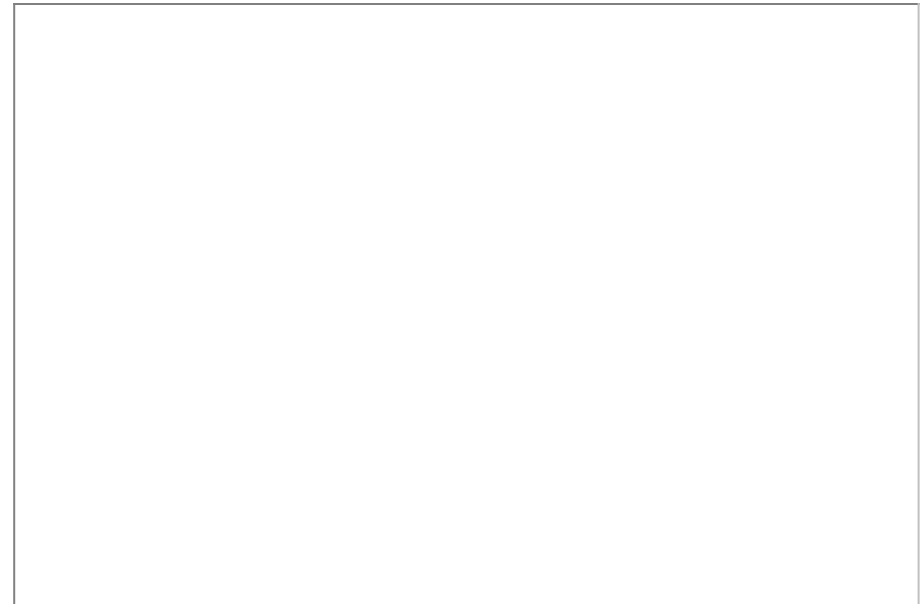


High Croft, Broadwas, Worcester



For illustrative purposes only. Decorative finishes, fixtures & fittings do not represent the current state of the property. Measurements are approximate & not to scale. Floor Plans made using RoomSketcher.

- Corner plot
- No onward chain
- Four bedrooms
- Two bathrooms
- Village location
- Double garage



For more information on this house or to arrange a viewing please call the office on:
01905 958 290

Alternatively, you can scan the QR to view all of the details of this property online.

