



Dingle Road, Leigh, Worcester, WR6 5JX

Offers Over £575,000

🛏️ 2 🚿 2 🚗 2



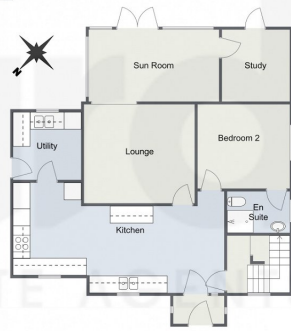
Summary: A wonderful opportunity to purchase the perfect downsize home which has been fully renovated to a very high standard by the current owners who are now looking to move to the coast. The attention to detail and the quality of materials used shine through as soon as you walk through the door. Nestled at the bottom of Dingle Road in Leigh, this detached bungalow offers privacy and beautiful views of the countryside from all windows. Viewing is highly recommended to appreciate the comforts this stylish home offers you.

Description: Approaching the property, double wooden gates open on to the large gravelled driveway. Accessorised by carefully chosen & meticulously maintained plants, this is your first hint at how homely, yet luxurious New Cottage is. A beautiful porch welcomes you in, leading to the stunning kitchen which is the heart of the home. Light and spacious, this is the perfect space for entertaining guests or indulging your passion for cooking, this kitchen is the epitome of comfort and style. Equipped with both base and eye level units, tiled splashback, and roll top work surfaces, all providing ample preparation space for your culinary creations. The extended worktop acts as a breakfast bar with space for two stools is perfect for informal dining or socializing with guests while cooking. You'll also find built-in appliances, including a dishwasher, an induction hob, oven and grill, and space for an American fridge/freezer, making meal preparation a breeze. Kickboard lighting and downlights complement the neutral shaker style units, providing optional mood lighting which adds an extra layer of sophistication. The kitchen seamlessly flows into the utility, which offers everything for your laundry needs; including plumbing for a washing machine, space for a tumble dryer, and a sink. From the kitchen you also have access to the lounge, bedroom two and the stairs rising to the first floor.

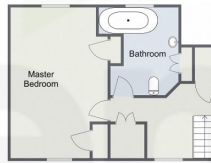
The lounge emanates warmth with its feature log burner and tastefully neutral décor, creating an inviting ambiance. Flowing seamlessly from the open plan living area is a sun room, ingeniously repurposed by the current owners as a delightful dining space. This allows for dining as the sun beams in and on those warmer days the dining can move outside with French doors, ideal for al fresco entertaining. This charming sunlit sanctuary also provides access to



Dingle Road, Leigh
Ground Floor



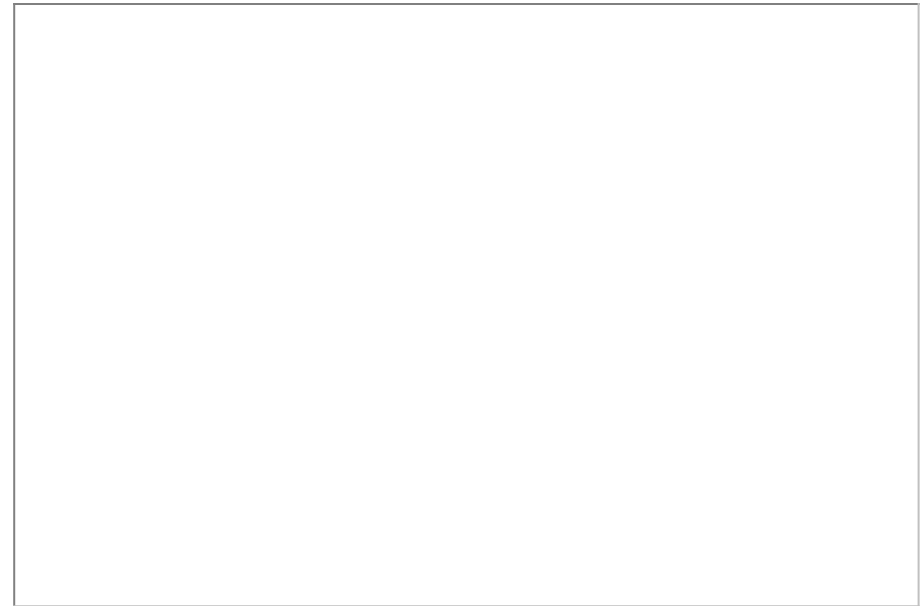
First Floor



Total Area
Approx
133.9 sq m
1441.3 sq ft

For illustrative purposes only. Decorative finishes, fixtures & fittings do not represent the current state of the property. Measurements are approximate & not to scale. Floor Plans made using RoomSketcher.

- Property Offering Privacy and Beautiful Views
- Renovated to a High Standard
- Perfect Downsize Home
- Nestled In The Sought-After Village of Leigh



For more information on this house or to arrange a viewing please call the office on:

01905 958 290

Alternatively, you can scan the QR to view all of the details of this property online.

