



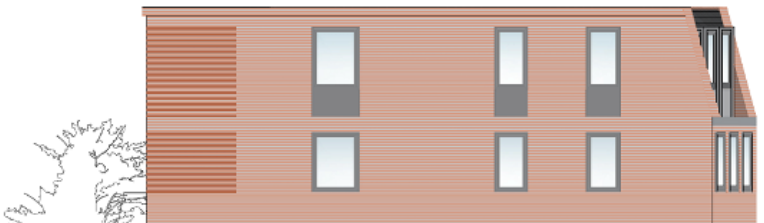
Notes



South Elevations

Datum 14.000m

RESIDENTIAL  
BRIDGE  
STREET



RESIDENTIAL  
FLATS  
ACROSS  
THE  
STREET

R1	09.02.24	Floor plans and elevations redesigned.
R2	25.01.24	Window shapes adjusted, drawings updated across. General building height fixed.
P	7.11.23	Final Design base.
Revision	Date	Description

**Nick Carroll Architects**  
 42 Broad Street  
 Worcester  
 WR1 3LR  
 Tel: 01905 612812  
 Email: nick@nickcarroll.net  
 www.nickcarrollarchitects.co.uk

Client  
 Squared Capital  
 Project  
 Residential Development



It's who you move with.

# Newport Street, Worcester, WR1 3NR

£295,000

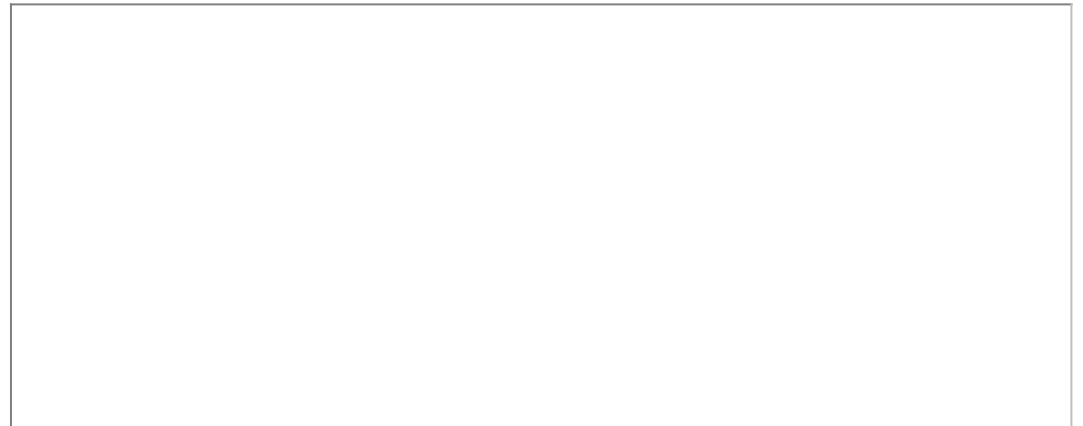
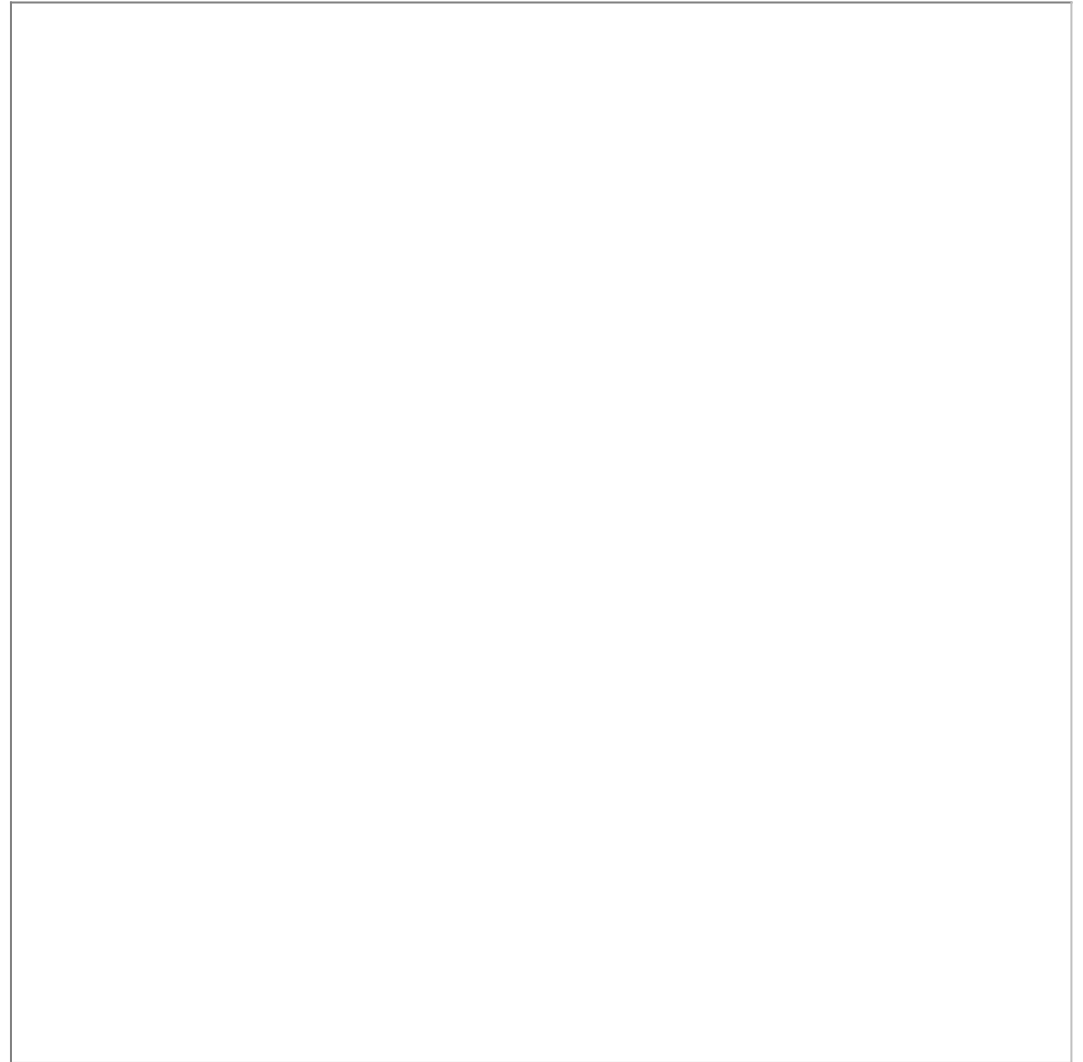
4 4 0



An exciting opportunity in the heart of Worcester. Full planning approval for demolition of existing building and replace with a three storey detached development. Commercial space to the ground floor and four apartments to the two additional floors. Newport Street is on the outskirts of the town centre, close to Worcester Racecourse and Worcester County Cricket ground. The apartments look out on the the River Severn.

Application number is 23/00783/FUL

[worcester.gov.uk/Planning/Display/23/00783/FUL](http://worcester.gov.uk/Planning/Display/23/00783/FUL)





South Elevations



West Elevations

- Development Opportunity with Planning Approved
- City Centre
- Commercial Ground Floor
- Application number is 23/00783/FUL
- Four One Bedroom Apartments
- Great Location



For more information on this house or to arrange a viewing please call the office on:  
**01905 958 290**

Alternatively, you can scan the QR to view all of the details of this property online.

