



Aston Court, Basin Road, Worcester, WR5 3FR

Offers Over £310,000

🛏️ 2 🚿 2 🚗 1



Summary:

A great opportunity to live in a beautiful and spacious, two double bedroom, ground floor apartment with an undisturbed view looking out over to the river. Situated in Diglis Basin, close to the city centre, the cosmopolitan bars, and restaurants. Modified to a high specification by the owners who have owned since new. To include granite work surfaces, built in wardrobes, and Karndean flooring. Used as a second home this immaculate apartment has hardly been lived in. Available with no onward chain. Entrance hall, fitted kitchen which opens up into dining space and living area. A private balcony that enjoys the evening sun. En suite to the main bedroom and separate bathroom. The property benefits from gas central heating, storage, parking and a bike store. Viewing highly recommended to appreciate the position, view and quality this lovely apartment offers.

Description:

Access is gained via the communal entrance to apartments. Private entrance hall with Karndean flooring, and generous storage cupboard. Doors providing access to all rooms. The kitchen has base and eye level high gloss work units set to a granite work surface. Four ring hob with overhead extractor and built in oven. Built in fridge freezer, dishwasher, and washer/dryer. Karndean flooring which leads into the open plan dining and living space.. This area is incredibly light due to the sliding patio door out on to the balcony and enjoying the view. The main bedroom has built in wardrobes, en-suite, and a Juliette balcony. The second bedroom is also a double, and has a storage cupboard and a Juliette balcony. Three piece bathroom suite with shower over bath. The bathroom is half tiled and has tiled flooring. The property has parking in a private gated car park.

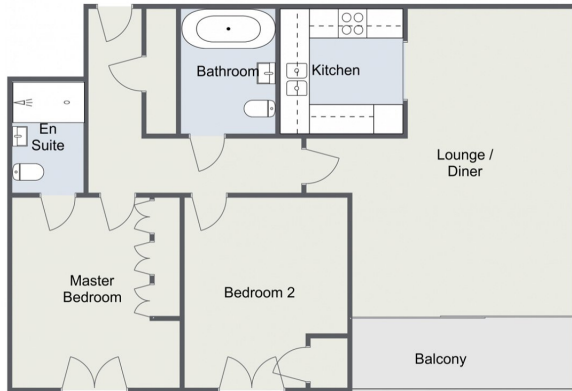
Outside:

The apartment has a private balcony off the living space with a lovely view. There are lots of open spaces surrounding the development for you to explore. Allocated parking space.

Location:



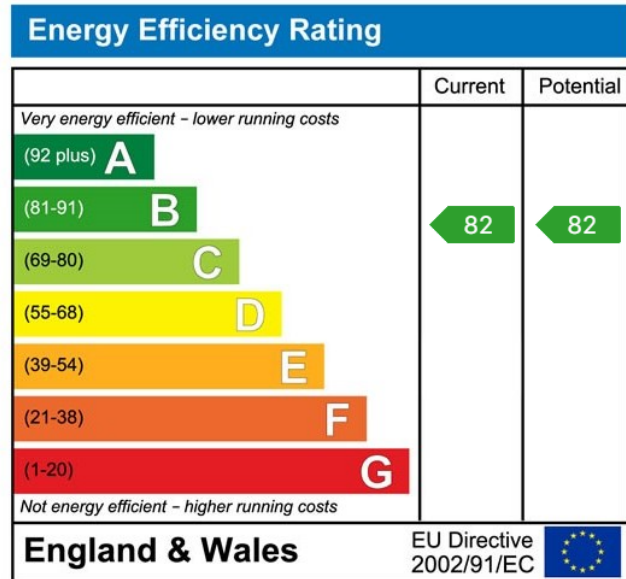
Basin Road, Worcester
Ground Floor



Total Area
Approx
87.7 sq m
944.0 sq ft

For illustrative purposes only. Decorative finishes, fixtures & fittings do not represent the current state of the property. Measurements are approximate & not to scale. Floor Plans made using RoomSketcher.

- Two Double Bedrooms
- River View
- En Suite
- Master Bedroom
- Convenient Transport Links
- Elevated Ground Floor Apartment
- Private Balcony
- Private Parking
- Open Plan Kitchen/Living
- Popular Diglis Location



For more information on this house or to arrange a viewing please call the office on:

01905 958 290

Alternatively, you can scan the QR to view all of the details of this property online.

