



REDPATH LEACH

ESTATE AGENTS

FEATURES

- First Floor Duplex Apartment
- Grade II Listed Mill Conversion
- 29' Open Plan Living Space
- Two Double Bedrooms
- Sun Terrace with Westerly Aspect
- Secure Allocated Indoor Parking
- Available with No Onward Chain

HOLDEN MILL,
BLACKBURN ROAD,
BOLTON

O/O £140,000



Holden Mill, Blackburn Road, Bolton



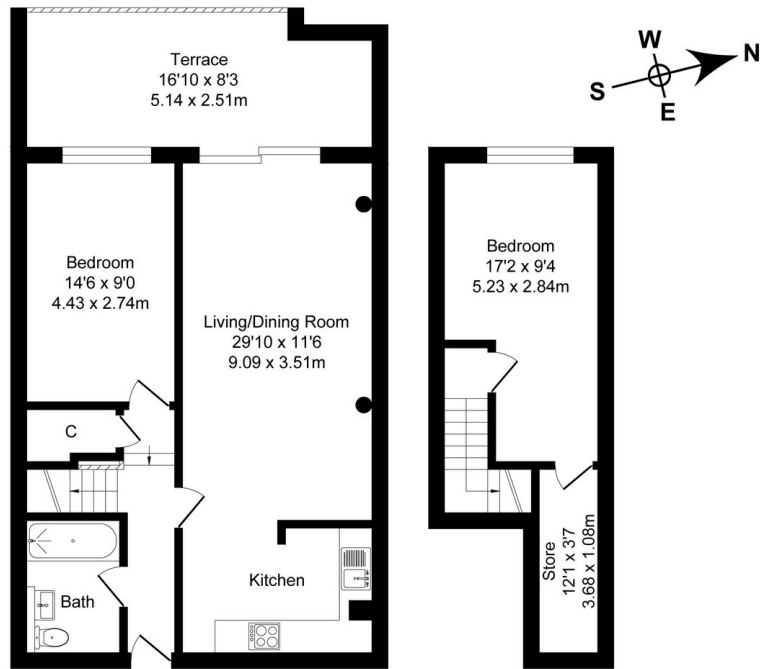
Holden Mill, Blackburn Road, Bolton



Holden Mill, Blackburn Road, Bolton

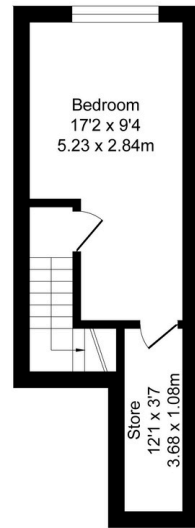
Total Approx. Floor Area 853 Sq.ft. (79.3 Sq.M.)

Surveyed and drawn by Lens Media for illustrative purposes only. Not to scale. Whilst every attempt was made to ensure the accuracy of the floor plan, all measurements are approximate and no responsibility is taken for any error.



Ground Floor

Approx. Floor Area 625 Sq.Ft (58.1 Sq.M.)



First Floor

Approx. Floor Area 228 Sq.Ft (21.2 Sq.M.)



Every care has been taken with the preparation of this Sales Brochure but it is for general guidance only and complete accuracy cannot be guaranteed. If there is any point, which is of particular importance professional verification should be sought. This Sales Brochure does not constitute a contract or part of a contract. We are not qualified to verify tenure of property. Prospective purchasers should seek clarification from their solicitor or verify the tenure of this property for themselves by visiting www.landregisteronline.gov.uk. The mention of any appliances, fixtures or fittings does not imply they are in working order. Photographs are reproduced for general information and it cannot be inferred that any item shown is included in the sale. All dimensions are approximate.

Exuding character and style in equal measure, Holden Mill continues to grow in popularity, affording a unique style of living which sets it apart from its competition and which cannot fail to impress. Only by internal inspection can the generous levels of space and thoughtful design of these homes, and the historical building in which they have been created, be fully appreciated, affording a real lifestyle opportunity within this exclusive complex, the type of which is normally reserved for the fashionable city centre of Manchester.

With a rich heritage of cotton weaving, the former mill town of Bolton was once at the forefront of the world's cotton production and this exciting opportunity lies within one such hub - Holden Mill, a stunning Grade II listed former cotton mill, the last of its type to be constructed in the town in 1927, and which has become a landmark building, famed for its iconic domed tower. Acquired by renowned local builders, P.J. Livesey, this centre of industry, once a building designed for function over aesthetics, has been re-modelled into a new purpose for the 21st century, skilfully and sympathetically converted to a range of executive apartments known as 'The Cottonworks', and providing a real lesson in how to blend character and contemporary flair.

Offering all the modern appointments one would expect of a modern home, the building has lost none of its character, with exposed brick work and cast-iron supports providing rustic acknowledgements to the building's industrial past, and stylish communal areas which create a feeling more of a boutique hotel than a residential building. Aside from the obvious appeal, what sets these properties apart is the private outdoor spaces, an innovative and unique feature to this development, which affords residents their own private sun terrace, and which can be enjoyed all year round to its sheltered manner of construction, ensuring low maintenance living does not necessarily mean that one is without a space in which to relax with a glass of wine in the sunshine.

'The Cottonworks' is located on the border of Astley Bridge and Sharpley, ensuring there are a host of local shops and amenities close at hand, with its convenient location on an arterial route into the town centre, affording superb public transport links, with the vibrant centre of Bolton accessible in minutes, where one can sample the diverse range of high street stores, bars and eateries. Furthermore, the A666 provides direct access to the motorway network, which will be ideal for those with a commute to consider, ensuring major commercial centres, in particular Manchester, are within easy reach.

This two bed, first floor duplex apartment boasts a spacious and thoughtfully designed layout, extending to in excess of 850 square feet of living accommodation in total, whilst the new floor coverings and recent re-decoration throughout has resulted in a bright and neutral canvas, ready for a new occupant to instil their own taste and style. One enters the building via the secure telephone entry system and proceeds via the communal areas up to the lift-serviced first floor, where one can access the private living spaces: entering via the reception hallway with its feature split level layout impressing immediately, emphasising the feeling of space, whilst there is a useful storage cupboard for all of those everyday essentials. One proceeds through into the sizeable main 29' open plan living area, a wonderfully sociable environment for entertaining and which affords an authentic industrial ambience, attributed largely to the fabulous cast-iron pillars which add such character. uPVC double glazed patio doors provide access to the 16' sun terrace, offering a real haven for contemplation and a perfect spot in which to relax and unwind at the end of a stressful day in the office, the leafy westerly aspect providing the perfect backdrop. The modern kitchen is fitted with a range of sleek high gloss wall and base units in white with contrasting grey laminated work surfaces and incorporates a Neff electric oven and halogen hob with extractor canopy, whilst there is space for one's other free-standing appliances.

The two double bedrooms are both well-proportioned and overlook the terrace, giving the occupier the flexibility to select whether they prefer their master bedroom to be located on the lower or upper level, however the latter does benefit from a particularly sizeable storage cupboard which may prove to be the deciding factor. The accommodation is completed by the bathroom, which is fitted with a three piece suite in classic white, comprising of WC, pedestal wash hand basin and tiled bath with overhead shower attachment.

Externally, the gated development affords a real feeling of exclusivity, approached via electronically operated gates, with beautifully maintained communal gardens and secure allocated indoor parking facilities. Offered with the additional benefit of no onward chain, we would highly recommend an internal inspection to fully appreciate the sociable community, timeless luxury and lifestyle which 'The Cottonworks' can offer.



REDPATH LEACH

ESTATE AGENTS



@redpathleach



@redpathleach



enquiries@redpathleach.co.uk



www.redpathleach.co.uk



01204 800292



17-19 Chorley New Road, Bolton, BL1 4QR