



Gayton Close, Trumpington

+44 (0) 1223 508050

lettings@cookecurtis.co.uk

www.cookecurtis.co.uk

A well maintained three-bedroom mid terrace house, available now, with front and rear gardens in an excellent location for Addenbrookes Hospital, access out to the M11 and into the City Centre.

£1,745 pcm

Gayton Close, Cambridge,
CB2 9JY



Located in the heart of Trumpington, this mid-terrace house is in an excellent location for those working at Addenbrookes Hospital, the City Centre or commuting out to the M11 and surrounding villages. Close to the house there are many local amenities including highly regarded schools, shops, doctors and a pharmacy, as well as accessible cycle paths and the guided busway to all areas of the City.

The house has a good layout with a large sitting/dining room and separate fully fitted kitchen, which come with modern wood units and contrasting work top, washing machine, oven and gas hob. On the first floor there are three good sized bedrooms and a family bathroom which has a fitted white suite, bath and shower over.

There is a front and rear garden and off-road parking.

The property is unfurnished and available now for a minimum 12-month tenancy. Sorry no pets.



Trumpington is a thriving, fast growing part of the city that still manages to retain its village identity and sense of community. It is exceptionally well located for access into the Addenbrooke's campus, out to the M11 and into the city by car, bus, guided bus, one of a few purpose-built cycle routes, or even an enthusiastic walk. The city's mainline station can be easily reached along the guided busway cycleway without having to mix with car traffic at all.





68 sqm / 742 sqft

3 bed 1 recep 1 bath

EPC - C / 69

Council Tax - D

Gas central heating

Off road parking

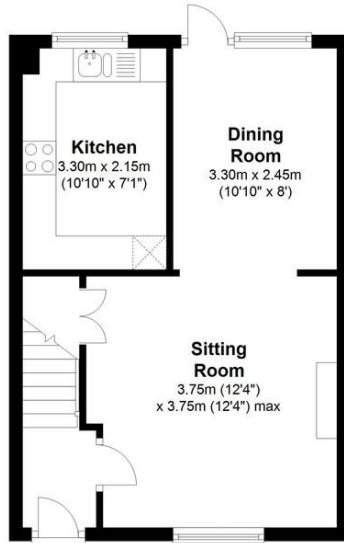
Unfurnished

Available now



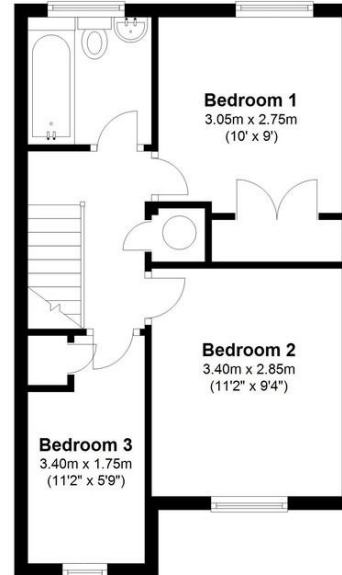
Ground Floor

Approx. 33.7 sq. metres (362.3 sq. feet)



First Floor

Approx. 35.3 sq. metres (380.1 sq. feet)



Total area: approx. 69.0 sq. metres (742.5 sq. feet)



Trumpington is a thriving, fast growing part of the city that still manages to retain its village identity and sense of community. It is exceptionally well located for access into the Addenbrooke's campus, out to the M11 and into the city by car, bus, guided bus, one of a few purpose-built cycle routes, or even an enthusiastic walk. The city's mainline station can be easily reached along the guided busway cycleway without having to mix with car traffic at all. The area has two primary schools with a modern state-of-the-art secondary school built in 2016 with excellent sporting facilities. A number of Private schools are within cycling distance. There are also various restaurants, pubs, shops, a post office, hairdresser, surgery, chemist, Waitrose supermarket and two country parks.

COOKE
CURTIS
& CO