



Madingley Road

+44 (0) 1223 508050

Lettings@cookecurtis.co.uk

www.cookecurtis.co.uk

A spacious, three bedroom duplex apartment with a garage and lovely communal gardens located on the west side of Cambridge with wonderful views over Churchill College and its grounds.

£1,900 pcm

Madingley Road,
Cambridge, CB3 0EL



A modern duplex first floor apartment of excellent proportions, which is a convenient location for access to the M11 and is around a 5 minute bike ride to Magdalene Street and its historic approach into Cambridge City Centre.

An external staircase leads to the first floor and the door to the apartment and its entrance hall, a three-piece shower room and a further staircase leading to the second floor.

The second floor has three double bedrooms, a modern bathroom suite comprising of a standalone bath, washbasin with a vanity unit and a wc.



The sitting room has sliding patio doors to the south facing balcony with views over the private and communal gardens and opens to the kitchen, which has fitted units with contrasting tiled splashbacks and worksurfaces, a gas hob with an extractor over and an oven under, dishwasher and undercounter Fridge and Freezer.

To the front, there is a parking area and bike store, and underneath there is a single garage with power and light connected. A pathway to the side leads to the communal gardens, which are private and well maintained and have a lovely blend of mature trees and shrubs.

Available 9th August 2025, available to three sharers also.





82 sqm / 888 sqft

3 beds, 1 recep, 2 bath

EPC - C / 76

Council tax band - D

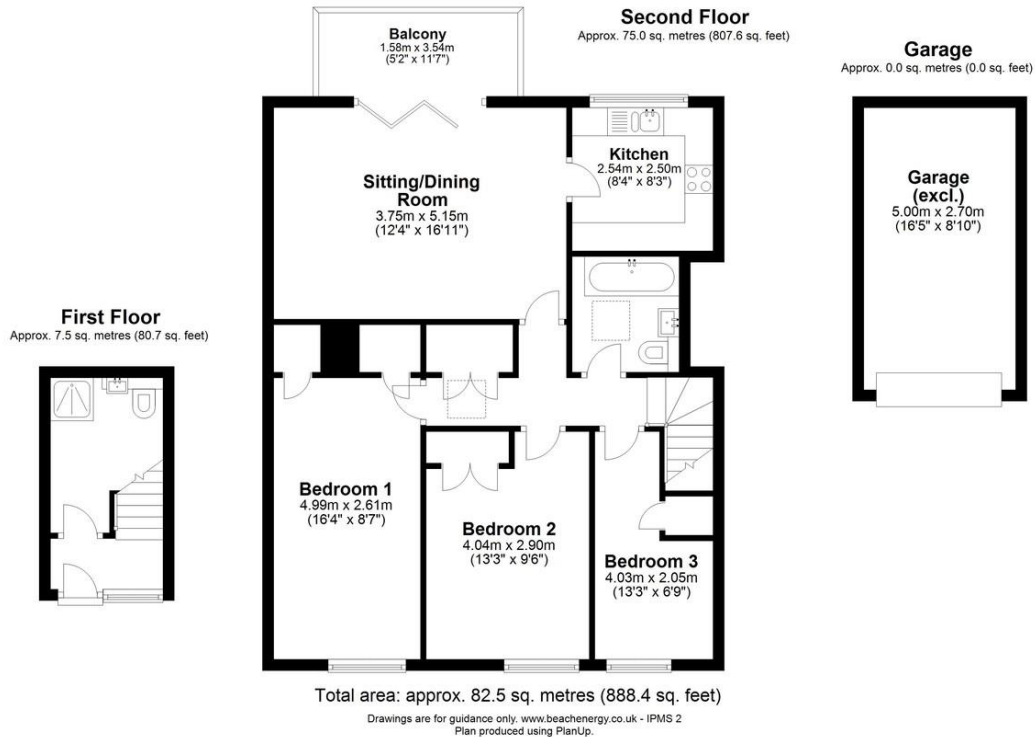
Gas central heating

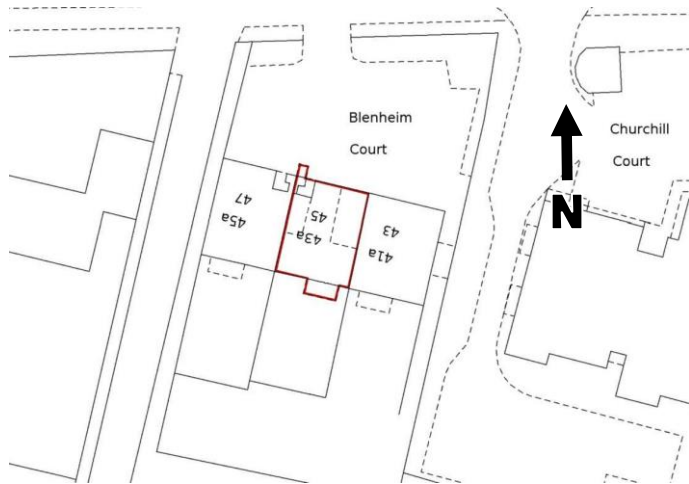
Garage

Off street parking

Available August 2025







Madingley Road is located on the west side of the city and is a little over a mile walk or ride to the city centre taking in some of the city's most iconic scenes and buildings, passing along Grange Road and the University Library, across The Backs, over the river by Garret Hostel Lane and weaving between Trinity, Caius and the Senate House to arrive at Great St Mary's and the market square. A Sainsburys supermarket, and various facilities including a restaurant, food trucks and sports grounds are available at nearby Eddington just off Madingley Road. Histon Road provides a number of shops including a Co-op, Aldi, Iceland, restaurants and public houses.

COOKE
CURTIS
& CO