



Gilmerston Court, Cambridge

+44 (0) 1223 508050

[lettings@cookecurtis.co.uk](mailto:lettings@cookecurtis.co.uk)

[www.cookecurtis.co.uk](http://www.cookecurtis.co.uk)

This three-bedroom apartment offers spacious living in a convenient Trumpington location, close to Addenbrooke's Hospital and the M11. It features a modern kitchen and bathroom, a large open-plan living/dining area, and access to communal gardens and a garage.

£1,600pcm

Gilmerton Court,  
Cambridge, CB2 9HQ



This three bedroom, provides substantial living accommodation, including a modern kitchen and bathroom. Positioned at the junction of Long Road and Trumpington High Street, the property provides excellent access to Addenbrooke's Hospital, the City Centre and the M11.

The entrance hall has two large storage cupboards, with the third bedroom just off which is suited for use as a nursery or study. The bathroom is fitted with three piece suite, including a walk in shower with screen, WC and basin, with mirrored medicine cabinet.

To the right of the entrance hall are two spacious double bedrooms, both with views over the communal gardens.

The kitchen is fitted with wall and base units and a plentiful amount of worktop space. Features built-in appliances such as oven and hob, fridge freezer, and washing machine.

The apartment also has a large, open plan living / dining room with plenty of space for sofas, dining table and other furniture. The living area has dual aspect windows, allowing plenty of natural light into the property.

Communal gardens and a garage are also included.

Available 9 July 2025.

Please refer to the 'Tenant Guide' brochure, for more information regarding the tenancy application process, referencing, terms and conditions of the holding fee and payments due before the start of the tenancy.

Uk power networks suggest the electricity is currently supplied by: British Gas.

Ofcom suggests the maximum broadband speed is: 1800 mbps

Gov.uk suggests the property has a very low flood risk.

Gilmerton Court stands at the corner of Long Road and Trumpington Road within half a mile of Trumpington's excellent facilities and with easy access into the City, Addenbrooke's and all major road links.

Trumpington is a thriving, fast growing part of the city that still manages to retain its village identity and sense of community. It is exceptionally well located for access into the Addenbrooke's campus, out to the M11 and into the city by car, bus, guided bus or one of a few purpose-built cycle routes.

The city's mainline station can be easily reached along the guided busway cycleway without having to mix with car traffic at all. Another new railway station, Cambridge South has been proposed and is expected to be nearby the Biomedical Campus.

The area has three primary schools and a state-of-the-art secondary school built in 2016 with excellent sporting facilities. Many of the city's finest private schools are within easy cycling distance. There are also various restaurants, pubs, shops, a post office, barber, GP surgery, pharmacy, library and community centre. There is a major Waitrose supermarket and a Sainsbury's local.







90sqm / 968sqft

---

3 bed, 1 bath, 1 recep

---

EPC - C / 77

---

Council tax band - D

---

Gas central heating

---

Off road parking, first come, first serve

---

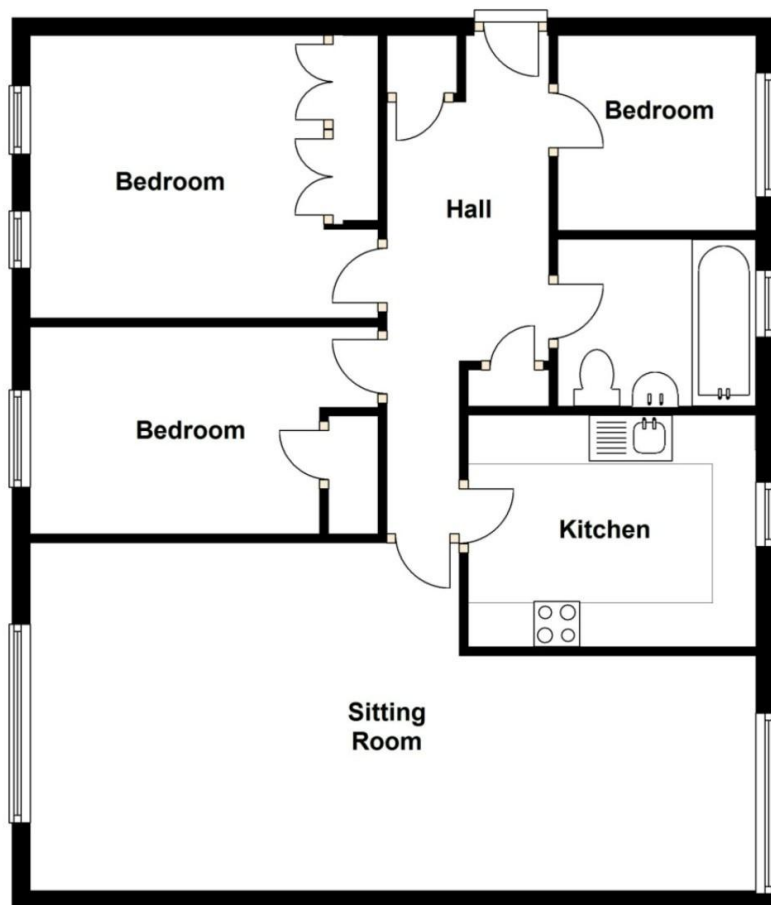
Communal garden

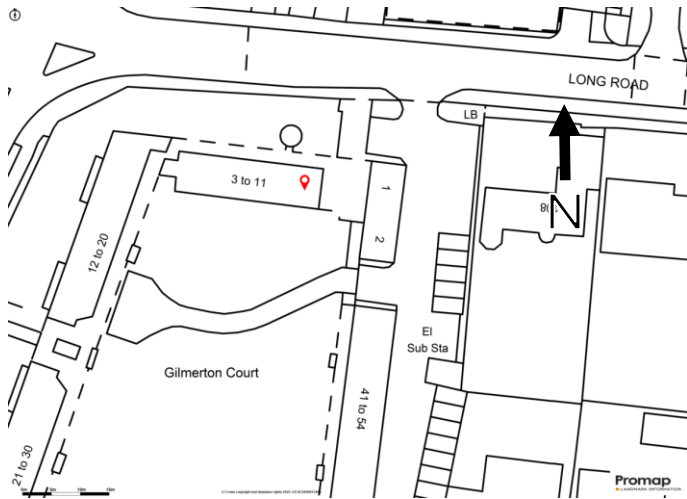
---

Available July 2025

---







Gilmerton Court stands at the corner of Long Road and Trumpington Road within half a mile of Trumpington's excellent facilities and with easy access into the City, Addenbrooke's and all major road links. Trumpington is a thriving, fast growing part of the city that still manages to retain its village identity and sense of community. It is exceptionally well located for access into the Addenbrooke's campus, out to the M11 and into the city by car, bus, guided bus or one of a few purpose-built cycle routes. The city's mainline station can be easily reached along the guided busway cycleway without having to mix with car traffic at all. Another new railway station, Cambridge South has been proposed and is expected to be nearby the Biomedical Campus. The area has three primary schools and a state-of-the-art secondary school built in 2016 with excellent sporting facilities. Many of the city's finest private schools are within easy cycling distance. There are also various restaurants, pubs, shops, a post office, barber, GP surgery, pharmacy, library and community centre. There is a major Waitrose supermarket and a Sainsbury's local.

COOKE  
CURTIS  
& CO