



Milton Road

+44 (0) 1223 508050

hello@cookecurtis.co.uk

www.cookecurtis.co.uk

A rare opportunity to live in a contemporary studio flat, ideally positioned on Milton road, close to the A14, Science park and Cambridge North station. The property also has excellent links to the City Centre and a range of

£1,200 pcm

Milton Road, Cambridge,
CB4 1ST



A top floor studio apartment on Milton Road in north Cambridge, available to a single working professional. Perfect for those working on the Science park. Milton Road is ideally located for access into the City by bicycle, bus, car or even an enthusiastic walk. In the other direction the A14, Milton and access to the M11, are just a short drive away.

The apartment is modern and receives streams of natural light, from the four Velux windows. It comes with a fold out table, space for a double bed and plenty of storage. The kitchen is separate to the living area and is equipped with an electric hob, oven and under-counter fridge freezer. There is a separate cupboard off the main living area, housing the washing machine. Through a separate door, you have the bathroom fitted with a sleek, three-piece suite.

Outside, there is a communal garden, as well as a large, covered bike store, for multiple bikes. There is no allocated parking with the apartment, but there is non permitted on street parking, located nearby.

Available 11th June 2025, for a six-month initial let. Video tour available.

Milton Road is located on the north side of the city. Nearby there are several shops including a Co Op, butchers, restaurants and other useful amenities. Cambridge Regional College and the Science Park are close by, taking only ten minutes to walk or a brisk five-minute cycle.

The new Cambridge North train station is only five minutes away and you could cycle to the city centre in less than ten minutes. There is access out to the A14 and M11 as well as local attractions such as Milton Country Park





40sqm / 430sqft

1 bed,1 bath, 0 recep

EPC - B / 82

Council tax band - A

Electric heating

On road parking

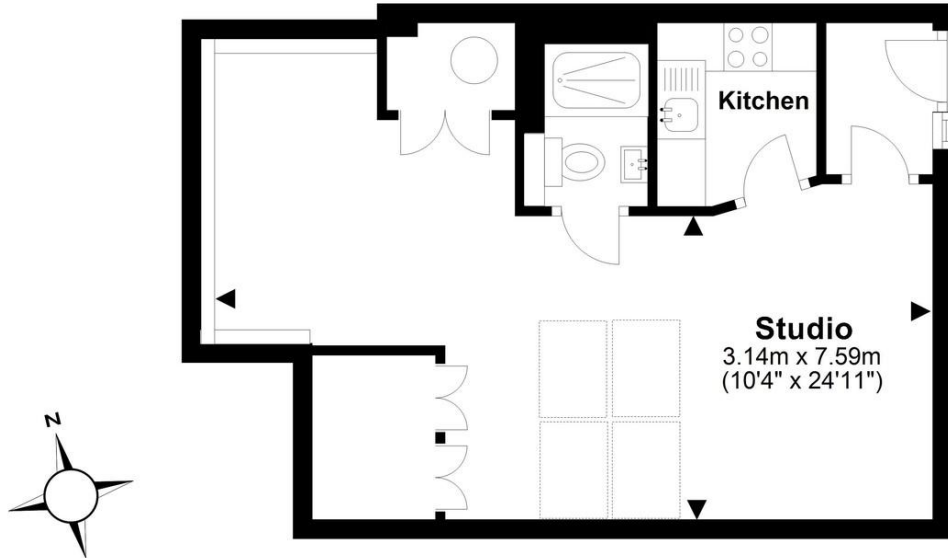
Communal garden

Available June 2025



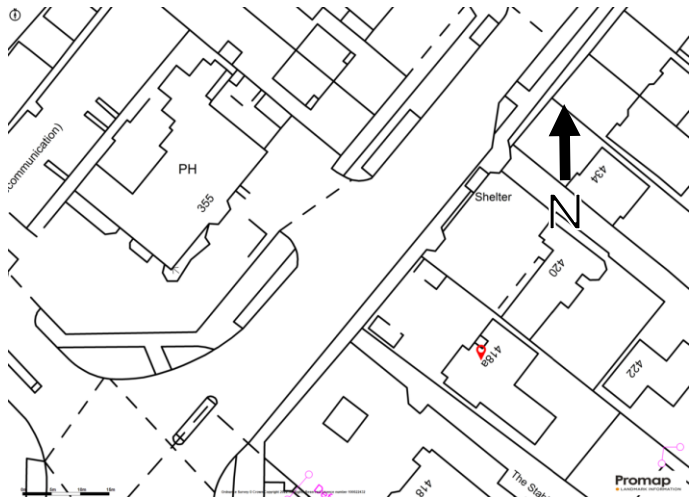
Second Floor

Approx. 36.6 sq. metres (394.0 sq. feet)



Total area: approx. 36.6 sq. metres (394.0 sq. feet)

Drawings are for guidance only. www.beachenergy.co.uk - IPMS 2
Plan produced using PlanUp.



Milton Road is located on the north side of the city. Nearby there are several shops including a Co Op, butchers, restaurants and other useful amenities. Cambridge Regional College and the Science Park are close by, taking only fifteen minutes to walk or a brisk five-minute cycle. The new Cambridge North train station is only five minutes away and you could cycle to the city centre in less than ten minutes. There is access out to the A14 and M11 as well as local attractions such as Milton Country Park nearby. Also in Milton is a Tesco supermarket.

COOKE
CURTIS
& CO